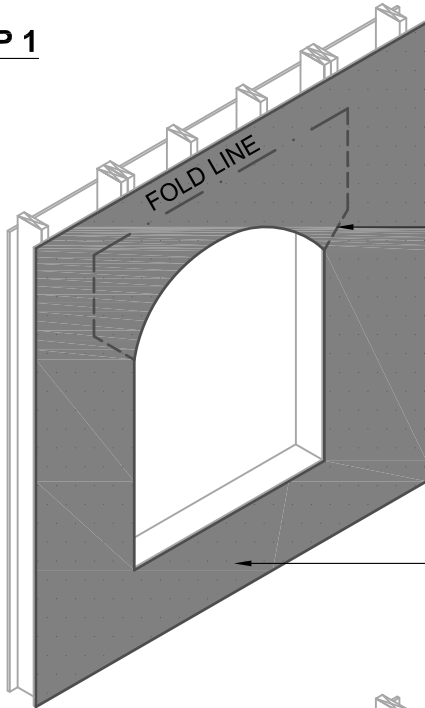
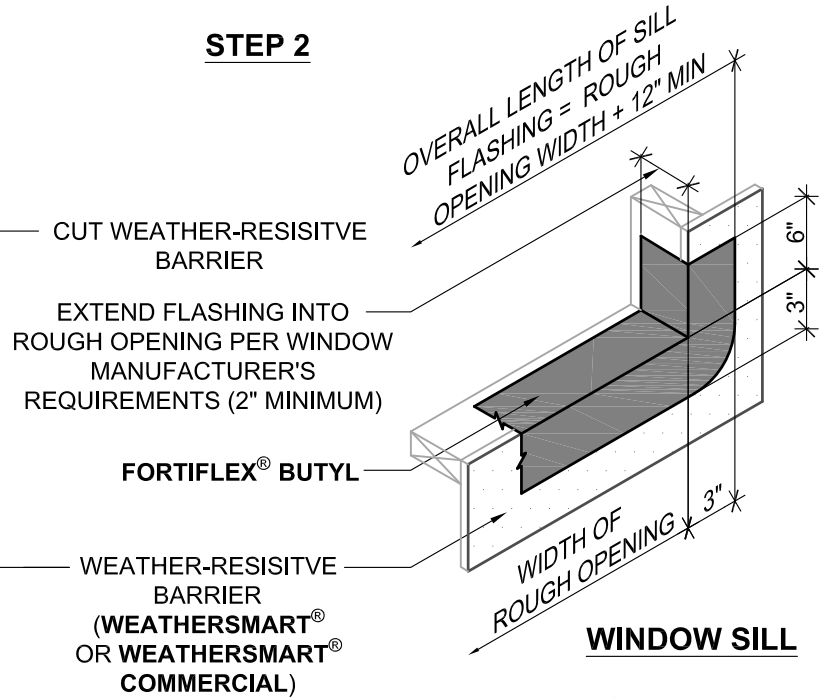


**FORTIFLEX® BUTYL FLANGED WINDOW DETAIL GUIDELINES CONSIST OF TWO PARTS. REFER TO DETAIL FFBF-6D2B FOR CONTINUED STEPS 4-7.**

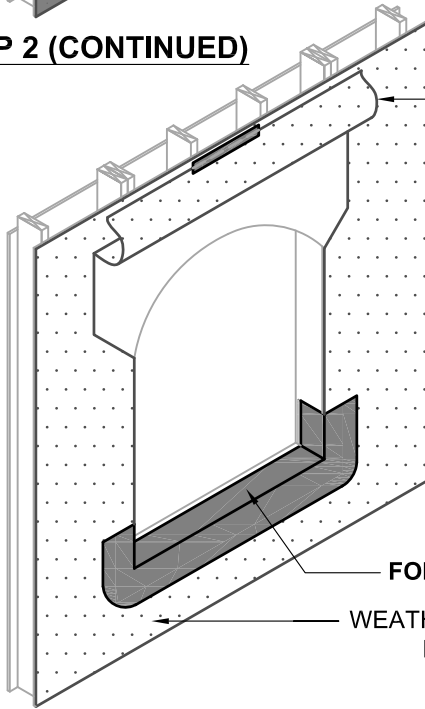
**STEP 1**



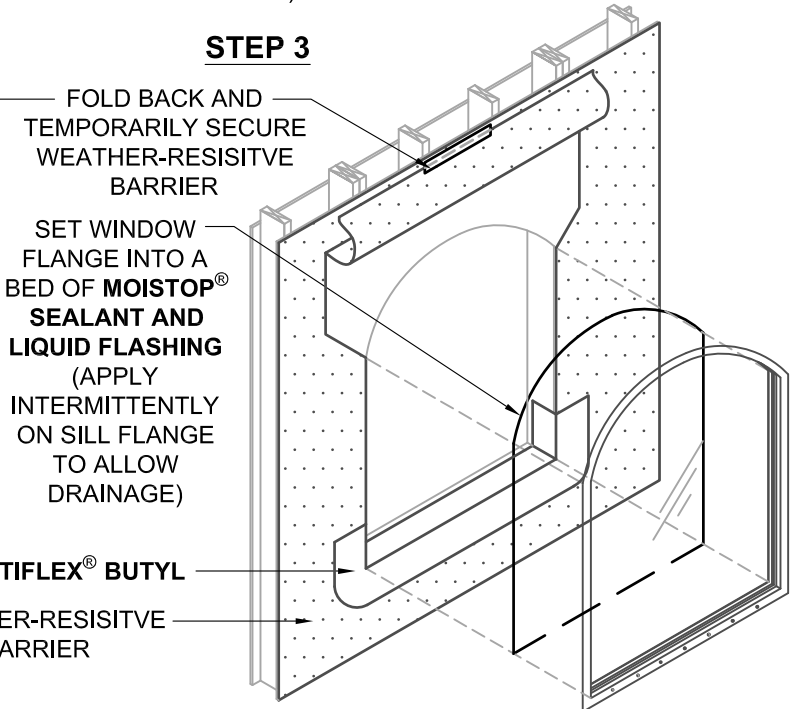
**STEP 2**



**STEP 2 (CONTINUED)**



**STEP 3**



**NOTES:**

1. DETAIL SHOWS THE WEATHER-RESISTIVE BARRIER (WRB) ASSEMBLY INSTALLED OVER EXTERIOR GRADE SHEATHING. ACCEPTABLE SUBSTRATES INCLUDE PLYWOOD, OSB AND GYPSUM BOARD.
2. WINDOW FLASHING RECOMMENDATIONS ARE BASED OFF ASTM E2112 AND MAY VARY DEPENDING ON PROJECT SPECIFIC REQUIREMENTS. WINDOW INSTALLATION REQUIREMENTS TO BE VERIFIED BY DESIGN PROFESSIONAL.



**Fortifiber Building Systems Group™**  
*Protecting Your World from the Elements™*  
 Call 1-800-773-4777 for Technical Assistance  
 NATIONAL SALES OFFICE - Fernley, NV  
 www.fortifiber.com

MANUFACTURER GUIDE DETAILS ARE FOR REFERENCE ONLY. FORTIFIBER® DOES NOT ASSUME RESPONSIBILITY FOR ERRORS OR DEVIATIONS IN DESIGN OR ENGINEERING. PROJECT SPECIFIC VERIFICATION IS RECOMMENDED PRIOR TO INSTALLATION.

**FORTIFLEX® BUTYL**

**FLANGED WINDOW**

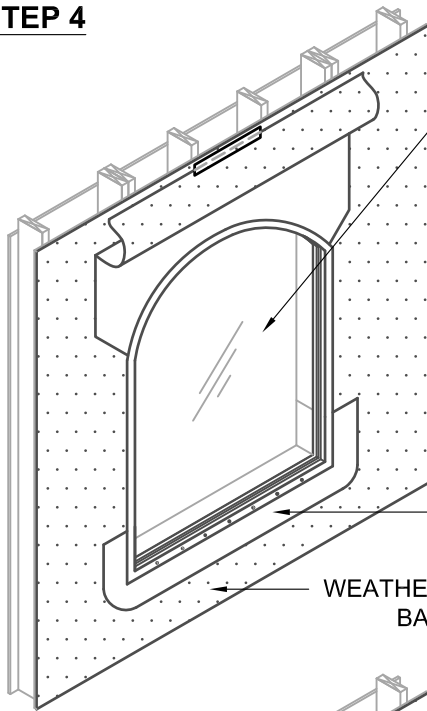
METHOD A1 - WRB INSTALLED BEFORE  
**FORTIFLEX® BUTYL PART 1 OF 2**

SCALE: N.T.S. 08-08-2018

**FFBF-6D2A**

**FORTIFLEX® BUTYL FLANGED WINDOW DETAIL GUIDELINES CONSISTS OF TWO PARTS. REFER TO DETAIL FFBF-6D2A FOR PREVIOUS STEPS 1-3.**

**STEP 4**

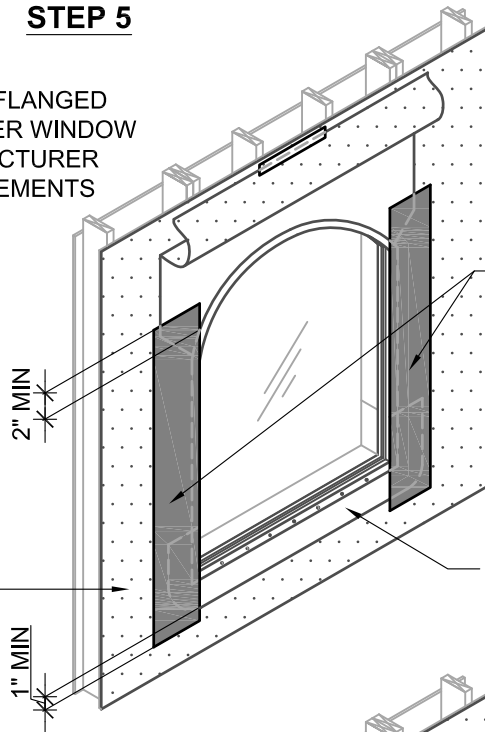


INSTALL FLANGED WINDOW PER WINDOW MANUFACTURER REQUIREMENTS

FORTIFLEX® BUTYL

WEATHER-RESISTIVE BARRIER

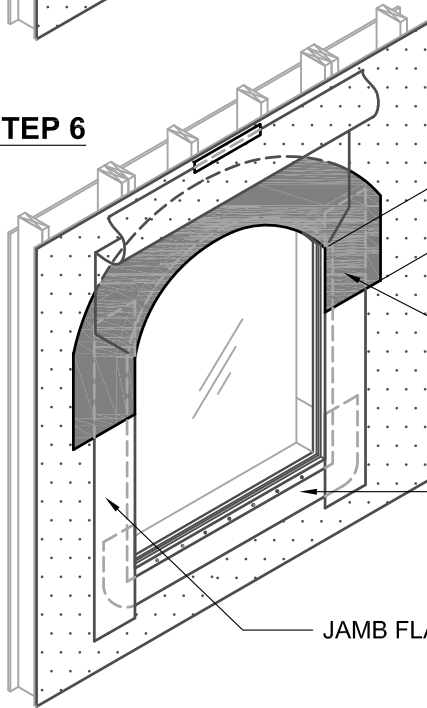
**STEP 5**



JAMB FLASHING (FORTIFLASH® OR FORTIFLASH® BUTYL)

FORTIFLEX® BUTYL

**STEP 6**

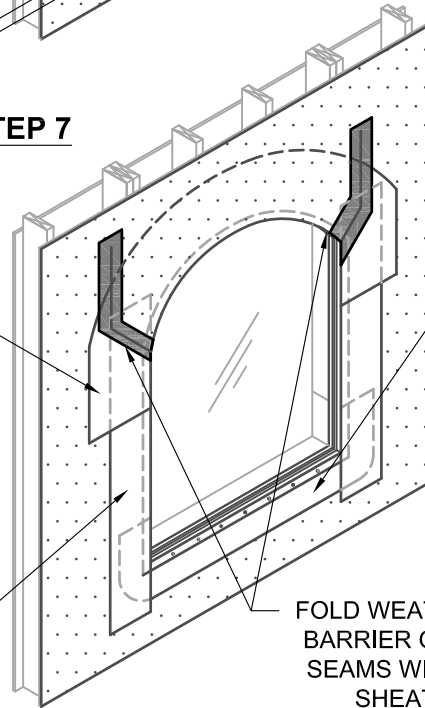


FORTIFLEX® BUTYL

FORTIFLEX® BUTYL

JAMB FLASHING

**STEP 7**



FORTIFLEX® BUTYL

FOLD WEATHER-RESISTIVE BARRIER OVER AND TAPE SEAMS WITH FORTIFIBER SHEATHING TAPE

**NOTES:**

1. REFER TO NOTES FFBF-6D2A.

MANUFACTURER GUIDE DETAILS ARE FOR REFERENCE ONLY. FORTIFIBER® DOES NOT ASSUME RESPONSIBILITY FOR ERRORS OR DEVIATIONS IN DESIGN OR ENGINEERING. PROJECT SPECIFIC VERIFICATION IS RECOMMENDED PRIOR TO INSTALLATION.

**FORTIFLEX® BUTYL**

**FLANGED WINDOW**

METHOD A1 - WRB INSTALLED BEFORE FORTIFLEX® BUTYL PART 2 OF 2

SCALE: N.T.S. 08-08-2018

**FFBF-6D2B**



**Fortifiber Building Systems Group™**

Protecting Your World from the Elements™

Call 1-800-773-4777 for Technical Assistance  
NATIONAL SALES OFFICE - Fernley, NV  
www.fortifiber.com