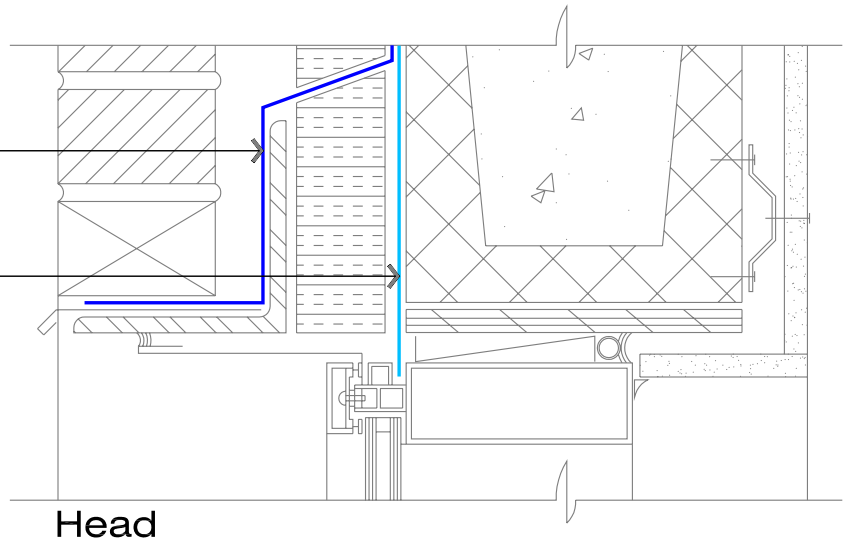


Blueskin TWF
Thru-Wall Flashing
Sheet

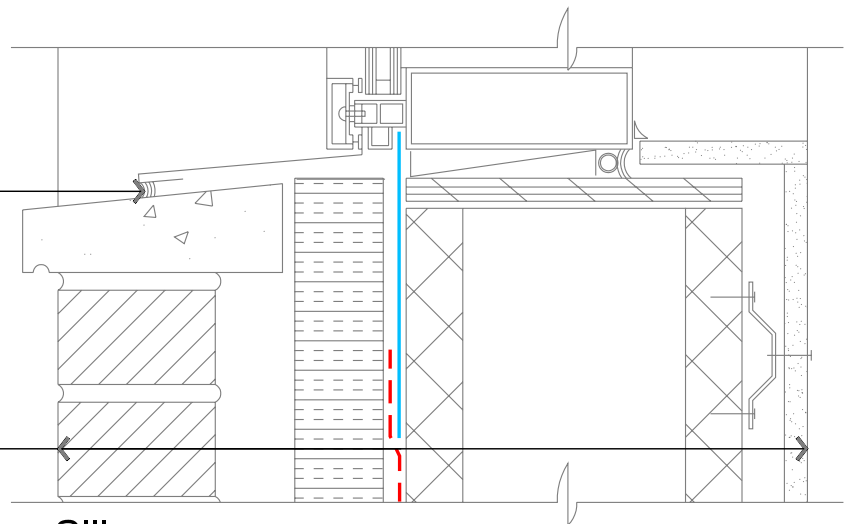
Blueskin SA



Head

Sealant

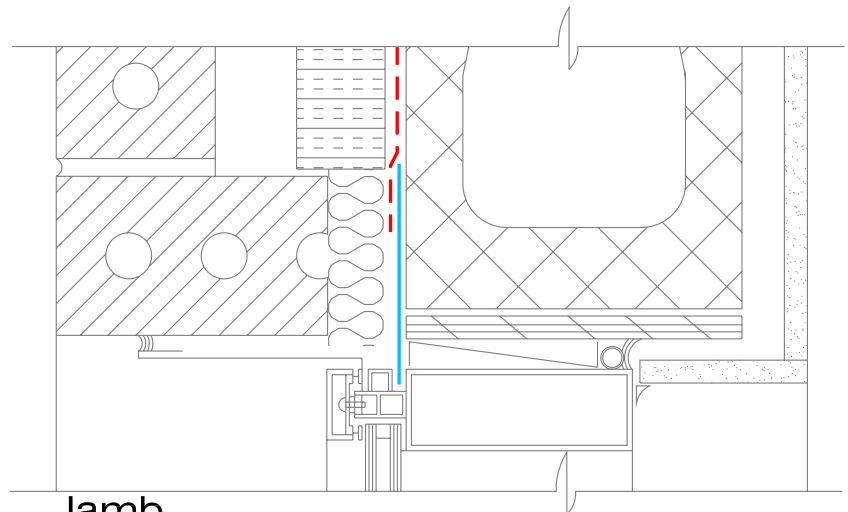
Brick Veneer
Air Space
Insulation
Air-Bloc
Concrete Masonry Unit
Furring
Gypsum Board



Sill

Notes:

1. A continuous plane of air tightness is achieved when the window frame thermal break and air/vapor barrier are well integrated.
2. Extend Blueskin into window frame and clamp tight.
3. Air-Bloc 21 may be used as an insulation adhesive to bond rigid insulation to CMU or other Air-Bloc systems.



Jamb

Henry
COMPANY

AIR-BLOC 06, 21 OR 32

BRICK VENEER/ CMU WALL

WINDOW 'B'
DETAILS

SCALE: N.T.S.

FIT TO PAPER

AB-H112