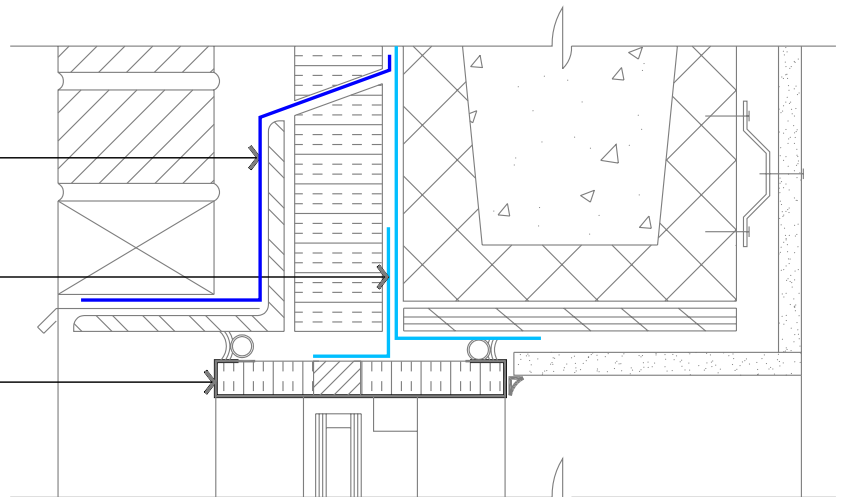


Blueskin TWF
Thru-Wall Flashing
Sheet

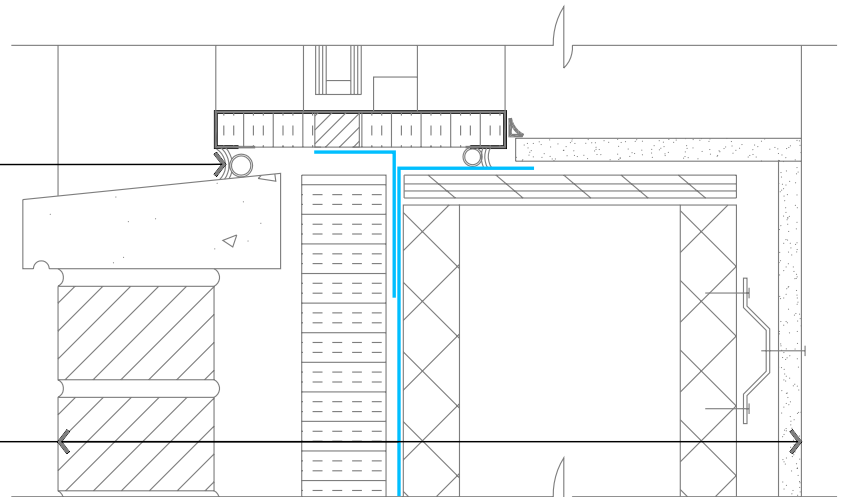
Blueskin SA
Transition Sheet

Factory Insulated
Window Frame



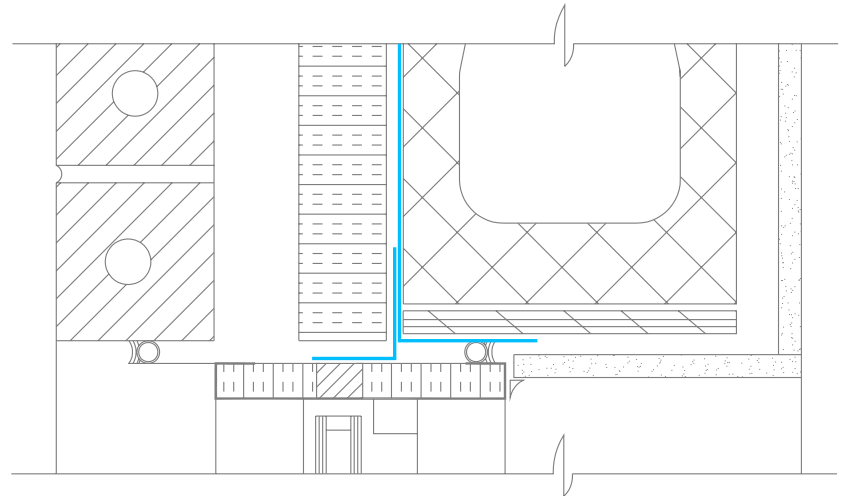
Head

Sealant and
Backer-Rod



Sill

Brick Veneer
Air Space
Insulation
BlueSkin SA
Concrete Masonry Unit
Furring
Gypsum Board



Jamb

Notes:

1. A continuous plane of air tightness is achieved when the window frame thermal break and air/vapor barrier are well integrated. There are several possibilities for window attachment.
2. Air-Bloc 21 may be used as an insulation adhesive to bond rigid insulation to CMU or other Air-Bloc systems.



BLUESKIN SA

BRICK VENEER/ CMU WALL

WINDOW 'A'
DETAILS

SCALE: N.T.S.

FIT TO PAPER

AB-H113