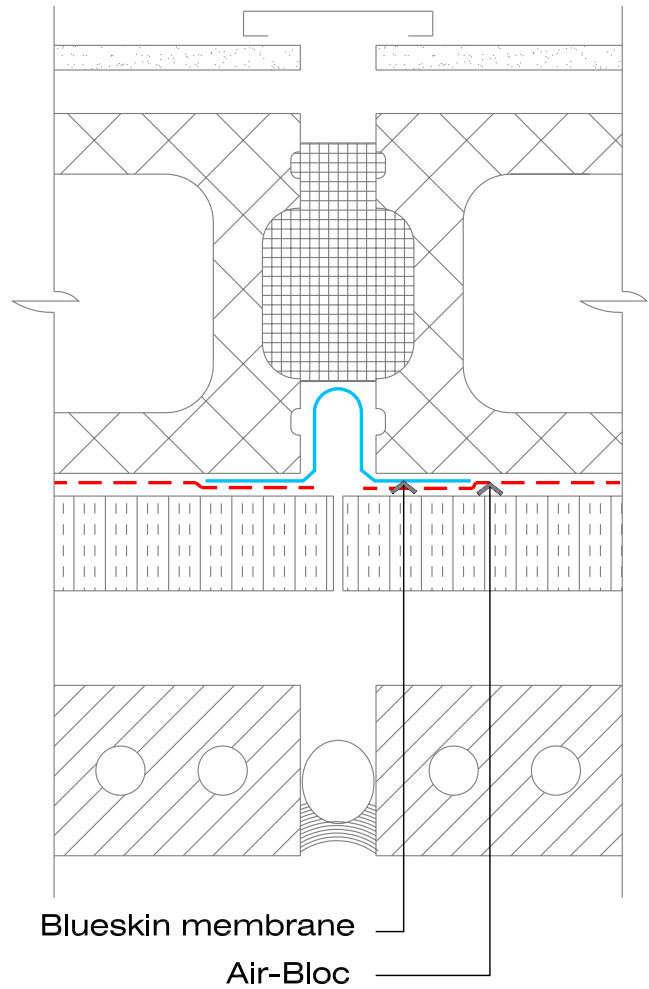


Control Joint



Expansion Joint

Notes:

1. No special treatment of the air/vapor barrier is required at masonry veneer control joints. Cavity wall compartmentalization may be achieved using a metal strip extending floor to floor at control joints.
2. Alternatively, use mineral wool insulation or a strip of Blueskin membrane.
3. At expansion joints, loop the Blueskin membrane into the opening and lap over both sides.
4. Air-Bloc 21 may also be used as an insulation adhesive to bond to CMU and other Air-Bloc systems.

Henry
COMPANY

AIR-BLOC 06, 21 OR 32

SCALE: N.T.S.

BRICK VENEER/ CMU WALL

FIT TO PAPER

PLAN
DETAILS

AB-H115