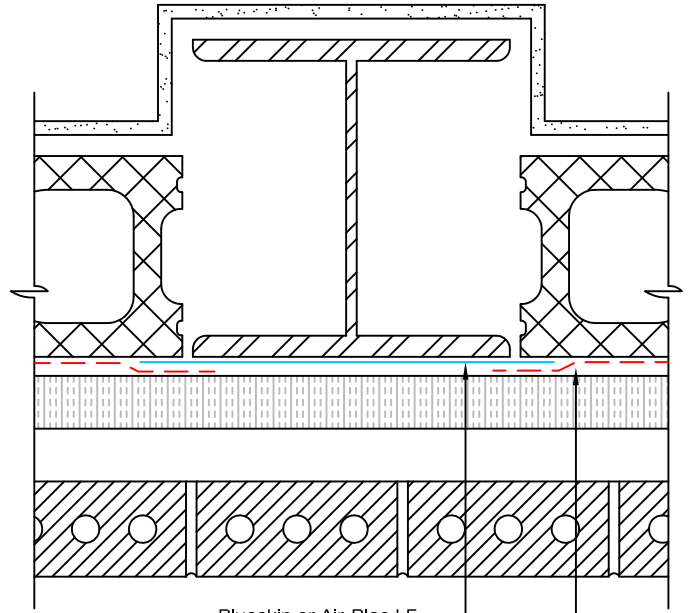


Blueskin or Air-Bloc LF
Air-Bloc 31MR
Concrete Column



Blueskin or Air-Bloc LF
Air-Bloc 31MR
Steel Column

Notes:

1. Use Blueskin or Air-Bloc LF as a transition material at the interface of structural supports and infill wall components, as well as the junction of dissimilar materials, floor slab to wall connections and across shear walls.
2. Where VOC compliant, Air-Bloc 21 may be used as an adhesive to bond rigid insulation to sheathing, CMU or other air barrier materials.

Henry
COMPANY®

PERMEABLE AIR-BLOC MEMBRANE

SCALE: N.T.S.

BRICK VENEER/ STEEL STUD/ CMU WALL

02-20-14

PLAN
DETAILS

AB-H117