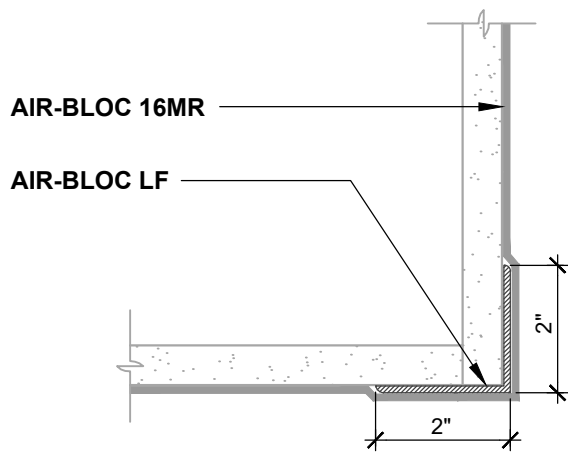
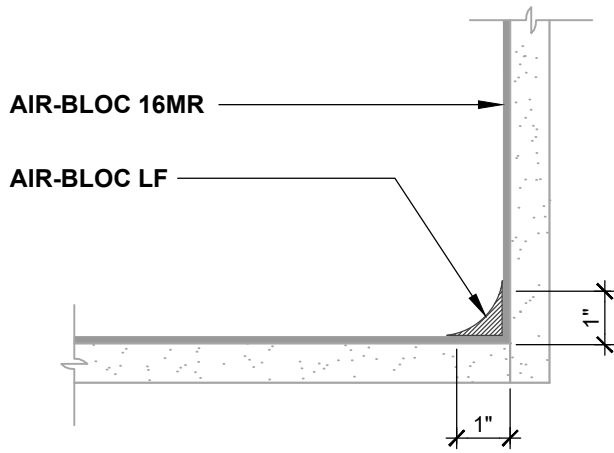


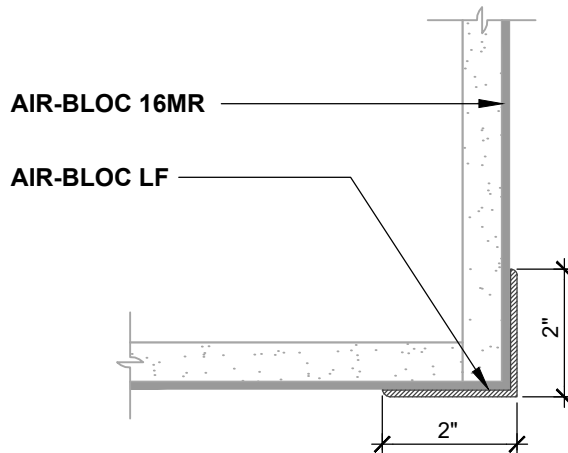
**INSIDE CORNER (PLAN VIEW)**  
FLASHING INSTALLED BEFORE WRB



**OUTSIDE CORNER (PLAN VIEW)**  
FLASHING INSTALLED BEFORE WRB



**INSIDE CORNER (PLAN VIEW)**  
FLASHING INSTALLED AFTER WRB



**OUTSIDE CORNER (PLAN VIEW)**  
FLASHING INSTALLED AFTER WRB

**NOTES:**

1. DETAIL SHOWS **AIR-BLOC 16MR FLUID APPLIED AIR AND VAPOR BARRIER**. SUBSTRATE SHOWN IS FOR REFERENCE ONLY. ACCEPTABLE SUBSTRATES FOR **AIR-BLOC LF** CORNER FLASHING INCLUDE EXTERIOR GRADE SHEATHING.
2. OSB AND PLYWOOD SUBSTRATES REQUIRE A SELF-ADHERED FLASHING AT INSIDE/OUTSIDE CORNERS. REFER TO DETAIL AB16MR-3A-1.
3. PRIME CUT/RAW EDGES OF EXPOSED GYPSUM SHEATHING CORE PRIOR TO **AIR-BLOC LF** APPLICATION. RECOMMENDED PRIMER/ADHESIVE INCLUDE: **BLUESKIN SPRAY PREP**.
4. INSTALL **AIR-BLOC 16MR** TO ACHIEVE A CONTINUOUS WATER-RESISTIVE BARRIER (WRB). INSULATION AND CLADDING NOT SHOWN FOR CLARITY. REFER TO LOCAL CODE ORDINANCES FOR INSULATION AND VAPOR BARRIER REQUIREMENTS.
5. REFER TO PRODUCT SPECIFIC TECHNICAL DATA SHEET (TDS) AND **AIR-BLOC 16MR** GUIDE SPECIFICATION FOR INSTALLATION PROCEDURES.

MANUFACTURER GUIDE DETAILS ARE FOR REFERENCE ONLY. HENRY DOES NOT ASSUME RESPONSIBILITY FOR ERRORS OR DEVIATIONS IN DESIGN OR ENGINEERING. PROJECT SPECIFIC VERIFICATION IS RECOMMENDED PRIOR TO INSTALLATION.

**AIR-BLOC 16MR FLUID APPLIED AIR AND VAPOR BARRIER**

**INSIDE/OUTSIDE CORNERS**  
**EXTERIOR GRADE SHEATHING**  
**LIQUID APPLIED FLASHING**

SCALE: N.T.S.

03-05-2020

**AB16MR-3A-2**

**Henry**<sup>®</sup>

999 N. Pacific Coast Highway, Suite 800  
El Segundo, CA 90245  
800-486-1278 • www.henry.com