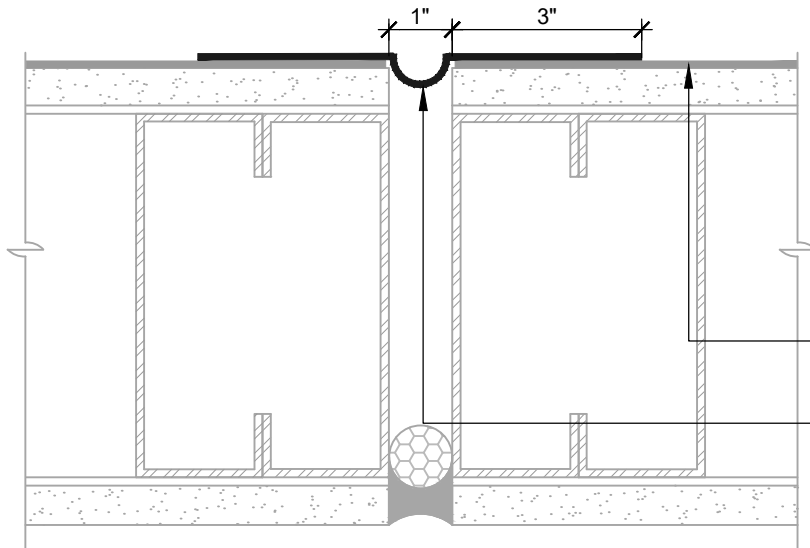
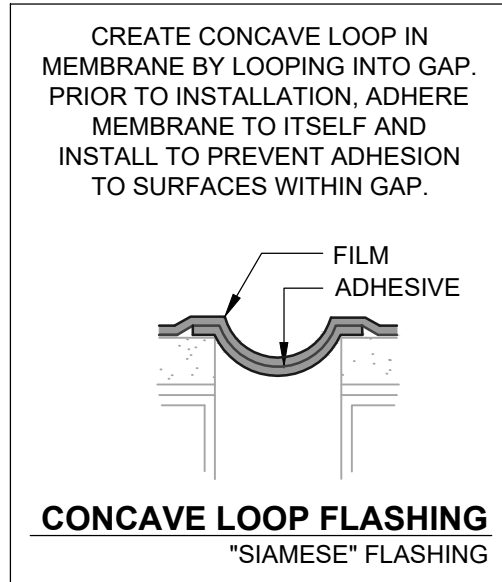


GAPS UP TO 1" MAX (PLAN VIEW)
FLASHING INSTALLED BEFORE WRB

AIR-BLOC 16MR
LAP AIR BARRIER 1" ONTO FLASHING

BLUESKIN SA
(SEE CONCAVE LOOP FLASHING DETAIL)



GAPS UP TO 1" MAX (PLAN VIEW)
FLASHING INSTALLED AFTER WRB

AIR-BLOC 16MR

BLUESKIN SA
(SEE CONCAVE LOOP FLASHING DETAIL)

NOTES:

1. DETAIL SHOWS **AIR-BLOC 16MR FLUID APPLIED AIR AND VAPOR BARRIER**. SUBSTRATE SHOWN IS FOR REFERENCE ONLY. ACCEPTABLE SUBSTRATES INCLUDE PLYWOOD, OSB, CONCRETE, CMU, METAL, AND EXTERIOR GRADE SHEATHING.
2. OTHER FLASHING OPTIONS INCLUDE: **BLUESKIN SA LT, BLUESKIN BUTYL FLASH OR BLUESKIN METAL CLAD**.
3. INSTALL **AIR-BLOC 16MR** TO ACHIEVE A CONTINUOUS WATER-RESISTIVE BARRIER (WRB). INSULATION AND CLADDING NOT SHOWN FOR CLARITY. REFER TO LOCAL CODE ORDINANCES FOR INSULATION AND VAPOR BARRIER REQUIREMENTS.
4. REFER TO PRODUCT SPECIFIC TECHNICAL DATA SHEET (TDS) AND **AIR-BLOC 16MR** GUIDE SPECIFICATION FOR INSTALLATION PROCEDURES.

MANUFACTURER GUIDE DETAILS ARE FOR REFERENCE ONLY. HENRY DOES NOT ASSUME RESPONSIBILITY FOR ERRORS OR DEVIATIONS IN DESIGN OR ENGINEERING. PROJECT SPECIFIC VERIFICATION IS RECOMMENDED PRIOR TO INSTALLATION.



999 N. Pacific Coast Highway, Suite 800
El Segundo, CA 90245
800-486-1278 • www.henry.com

AIR-BLOC 16MR FLUID APPLIED AIR AND VAPOR BARRIER

NON-MOVING JOINTS

**SUBSTRATE GAPS UP TO 1" WIDE MAXIMUM
SELF-ADHERED FLASHING**

SCALE: N.T.S.

03-05-2020

AB16MR-8B1