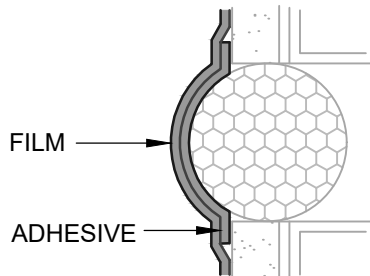


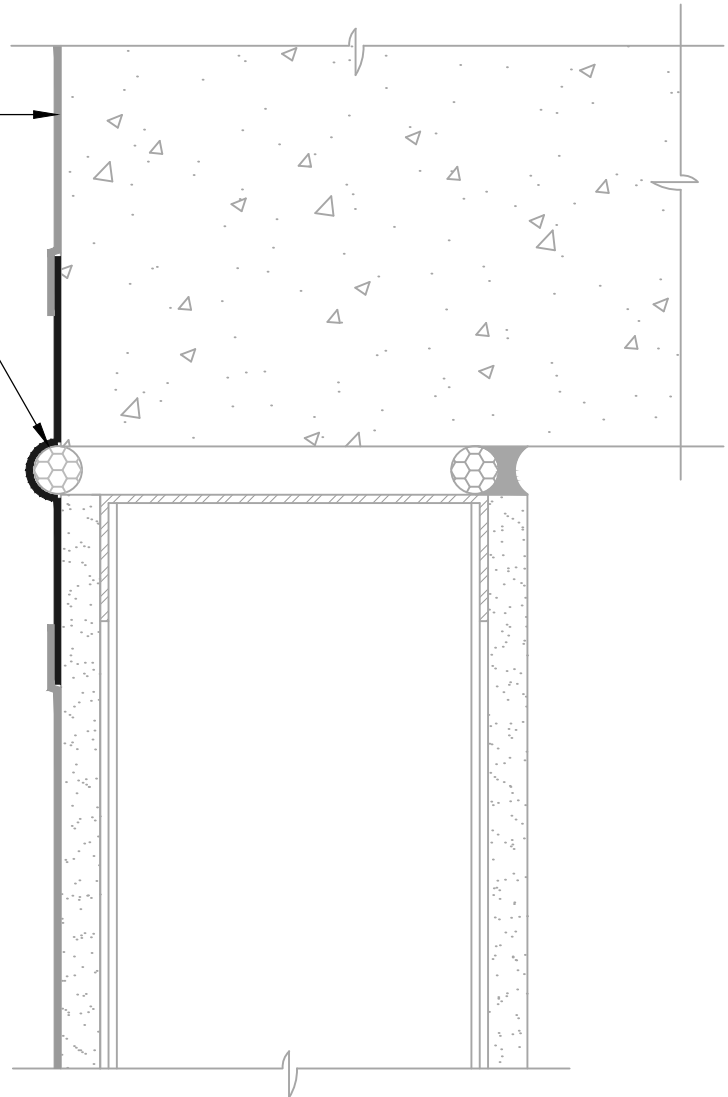
**AIR-BLOC 16MR**  
LAP AIR BARRIER 1" ONTO FLASHING

**BLUESKIN SA**  
(SEE CONVEX LOOP FLASHING DETAIL)

CREATE CONVEX LOOP IN  
MEMBRANE OVER BACKER ROD.  
PRIOR TO INSTALLATION, ADHERE  
MEMBRANE TO ITSELF AND  
INSTALL TO PREVENT ADHESION  
TO BACKER ROD.



**CONVEX LOOP FLASHING**  
"SIAMESE" FLASHING



**NOTES:**

1. DETAIL SHOWS **AIR-BLOC 16MR FLUID APPLIED AIR AND VAPOR BARRIER**. SUBSTRATE SHOWN IS FOR REFERENCE ONLY. ACCEPTABLE SUBSTRATES INCLUDE PLYWOOD, OSB, CONCRETE, CMU, METAL, AND EXTERIOR GRADE SHEATHING.
2. OTHER FLASHING OPTIONS INCLUDE: **BLUESKIN SA LT, BLUESKIN BUTYL FLASH OR BLUESKIN METAL CLAD**.
3. INSTALL **AIR-BLOC 16MR** TO ACHIEVE A CONTINUOUS WATER-RESISTIVE BARRIER (WRB). INSULATION AND CLADDING NOT SHOWN FOR CLARITY. REFER TO LOCAL CODE ORDINANCES FOR INSULATION AND VAPOR BARRIER REQUIREMENTS.
4. REFER TO PRODUCT SPECIFIC TECHNICAL DATA SHEET (TDS) AND **AIR-BLOC 16MR** GUIDE SPECIFICATION FOR INSTALLATION PROCEDURES.

**Henry**<sup>®</sup>

999 N. Pacific Coast Highway, Suite 800  
El Segundo, CA 90245  
800-486-1278 • www.henry.com

MANUFACTURER GUIDE DETAILS ARE FOR REFERENCE ONLY. HENRY DOES NOT ASSUME RESPONSIBILITY FOR ERRORS OR DEVIATIONS IN DESIGN OR ENGINEERING. PROJECT SPECIFIC VERIFICATION IS RECOMMENDED PRIOR TO INSTALLATION.

**AIR-BLOC 16MR FLUID APPLIED AIR AND VAPOR BARRIER**

**DEFLECTION JOINT**

**HORIZONTAL DEFLECTION JOINT  
SELF-ADHERED FLASHING**

SCALE: N.T.S.

03-05-2020

**AB16MR-8DA**