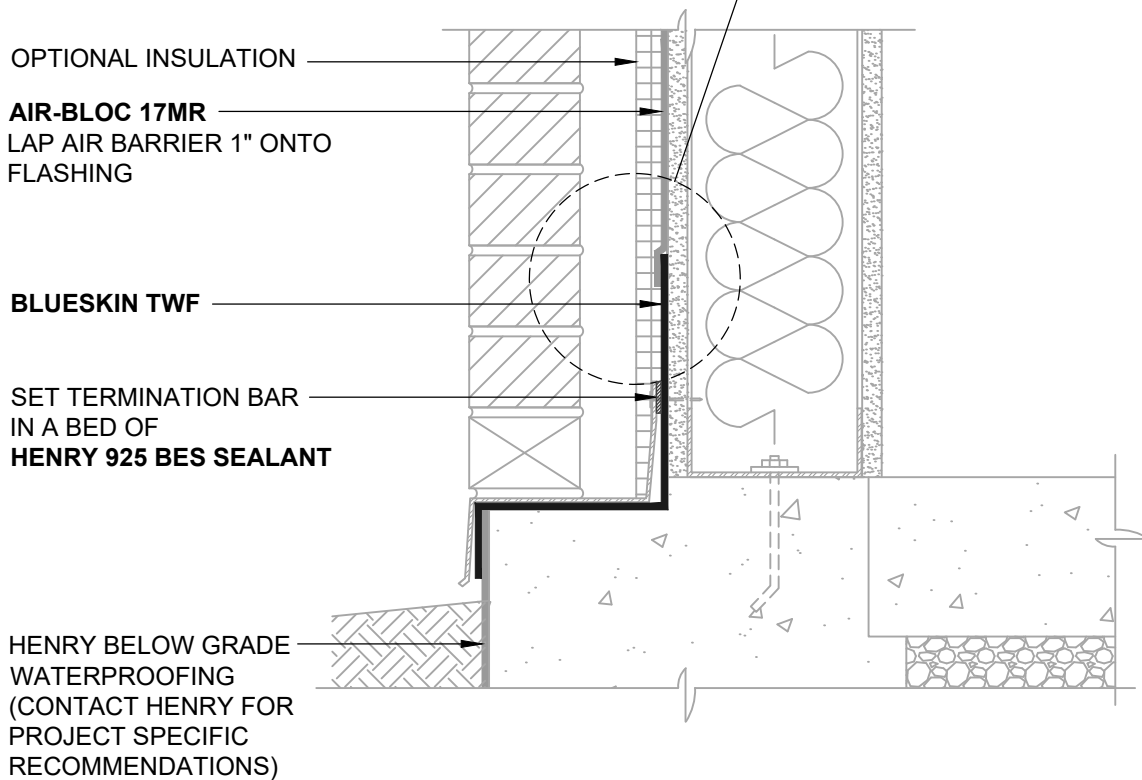


**FLASHING INSTALLED AFTER WRB**  
REVERSE LAP



**NOTES:**

1. DETAIL SHOWS **AIR-BLOC 17MR FLUID APPLIED VAPOR PERMEABLE AIR BARRIER**. SUBSTRATE SHOWN IS FOR REFERENCE ONLY. ACCEPTABLE SUBSTRATES INCLUDE PLYWOOD, OSB, CONCRETE, CMU, METAL, AND EXTERIOR GRADE SHEATHING.
2. INSTALL **AIR-BLOC 17MR** TO ACHIEVE A CONTINUOUS WATER-RESISTIVE BARRIER (WRB). OPTIONAL VAPOR BARRIER NOT SHOWN FOR CLARITY. REFER TO LOCAL CODE ORDINANCES FOR INSULATION AND VAPOR BARRIER REQUIREMENTS.
3. REFER TO PRODUCT SPECIFIC TECHNICAL DATA SHEET (TDS) AND **AIR-BLOC 17MR** GUIDE SPECIFICATION FOR INSTALLATION PROCEDURES.

**Henry**<sup>®</sup>

999 N. Pacific Coast Highway, Suite 800  
El Segundo, CA 90245  
800-486-1278 • www.henry.com

MANUFACTURER GUIDE DETAILS ARE FOR REFERENCE ONLY. HENRY DOES NOT ASSUME RESPONSIBILITY FOR ERRORS OR DEVIATIONS IN DESIGN OR ENGINEERING. PROJECT SPECIFIC VERIFICATION IS RECOMMENDED PRIOR TO INSTALLATION.

**AIR-BLOC 17MR FLUID APPLIED VAPOR PERMEABLE AIR BARRIER**

**WALL FOUNDATION**

**EXTERIOR WALL AND FOUNDATION TRANSITION  
SLAB ON GRADE WITH MASONRY LEDGE**

SCALE: N.T.S.

03-05-2020

**AB17MR-1B**