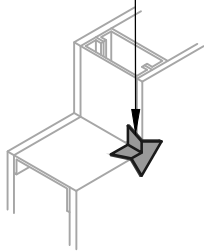


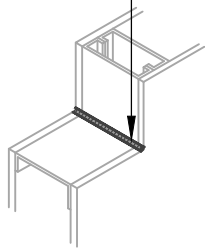
**OPTION #1**  
GUSSET

**OPTION #2**  
SEALANT

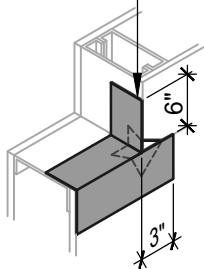
BLUESKIN SA



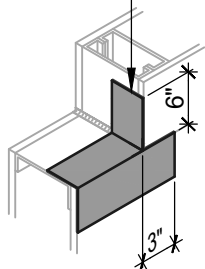
HENRY 925 BES SEALANT  
OR AIR-BLOC LF



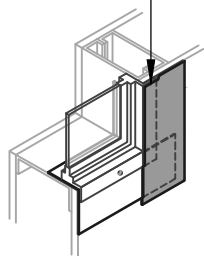
BLUESKIN SA



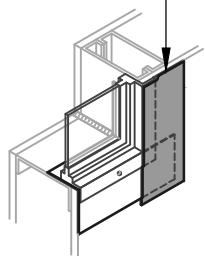
BLUESKIN SA OR  
AIR-BLOC LF



BLUESKIN SA



BLUESKIN SA OR  
AIR-BLOC LF



AIR-BLOC 17MR  
LAP AIR BARRIER 1" ONTO  
FLASHING

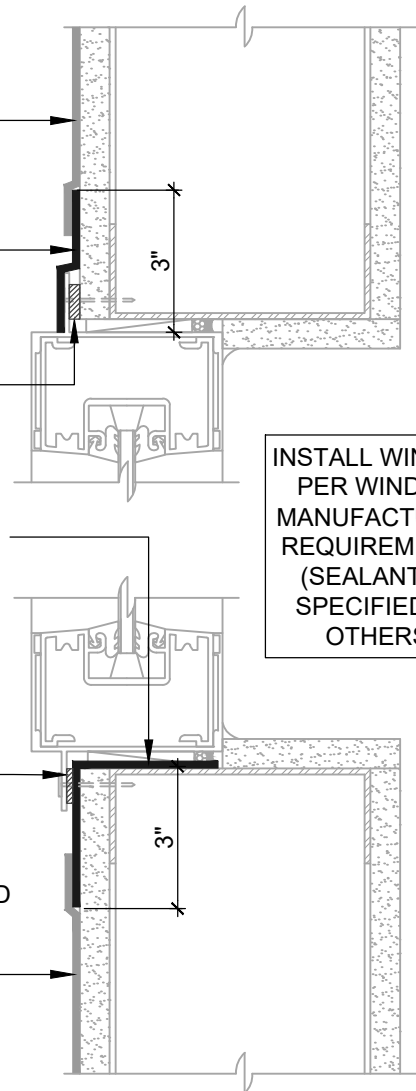
BLUESKIN SA OR  
AIR-BLOC LF

SET WINDOW FLANGE  
INTO A BED OF  
HENRY 925 BES SEALANT

BLUESKIN SA OR AIR-BLOC LF  
EXTEND FLASHING  
3" (SUGGESTED) INTO ROUGH  
OPENING (2" MIN)

SET WINDOW FLANGE  
INTO A BED OF  
HENRY 925 BES SEALANT  
(APPLY INTERMITTENTLY ON  
SILL FLANGE WHERE REQUIRED  
TO ALLOW DRAINAGE)

AIR-BLOC 17MR  
LAP AIR BARRIER 1" ONTO  
FLASHING



**WINDOW SILL/JAMB FLASHING**  
SEALANT AND GUSSET METHODS

**ASTM E2112 - METHOD A (SECTION VIEW)**  
FLASHING INSTALLED BEFORE WRB

**NOTES:**

1. DETAIL SHOWS AIR-BLOC 17MR FLUID APPLIED VAPOR PERMEABLE AIR BARRIER. SUBSTRATE SHOWN IS FOR REFERENCE ONLY. ACCEPTABLE SUBSTRATES INCLUDE PLYWOOD, OSB, CONCRETE, CMU, METAL, AND EXTERIOR GRADE SHEATHING.
2. OTHER FLASHING OPTIONS INCLUDE: BLUESKIN SA LT, BLUESKIN BUTYL FLASH OR BLUESKIN METAL CLAD.
3. PRIME CUT/RAW EDGES OF EXPOSED GYPSUM SHEATHING CORE PRIOR TO AIR-BLOC LF APPLICATION. RECOMMENDED PRIMER/ADHESIVE INCLUDE: BLUESKIN SPRAY PREP.
4. HENRY WINDOW FLASHING DETAILS ARE BASED ON ASTM E2112. ACTUAL CONDITIONS MAY VARY. VERIFY PROJECT SPECIFIC WINDOW INSTALLATION REQUIREMENTS AND FLASHING COMPATIBILITY WITH DESIGN PROFESSIONAL.
5. INSTALL AIR-BLOC 17MR TO ACHIEVE A CONTINUOUS WATER-RESISTIVE BARRIER (WRB). INSULATION, CLADDING AND OPTIONAL VAPOR BARRIER NOT SHOWN FOR CLARITY. REFER TO LOCAL CODE ORDINANCES FOR INSULATION AND VAPOR BARRIER REQUIREMENTS.
6. REFER TO PRODUCT SPECIFIC TECHNICAL DATA SHEET (TDS) AND AIR-BLOC 17MR GUIDE SPECIFICATION FOR INSTALLATION PROCEDURES.

**Henry**<sup>®</sup>

999 N. Pacific Coast Highway, Suite 800  
El Segundo, CA 90245  
800-486-1278 • www.henry.com

MANUFACTURER GUIDE DETAILS ARE FOR REFERENCE ONLY. HENRY DOES NOT ASSUME RESPONSIBILITY FOR ERRORS OR DEVIATIONS IN DESIGN OR ENGINEERING. PROJECT SPECIFIC VERIFICATION IS RECOMMENDED PRIOR TO INSTALLATION.

**AIR-BLOC 17MR FLUID APPLIED VAPOR PERMEABLE AIR BARRIER**

**FLANGED WINDOW**

**ASTM E2112 METHOD A  
FLASHING INSTALLED BEFORE WRB**

SCALE: N.T.S.

03-05-2020

**AB17MR-6A-A**