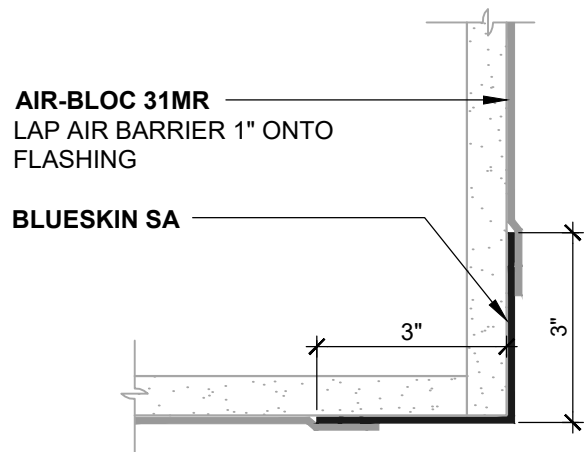
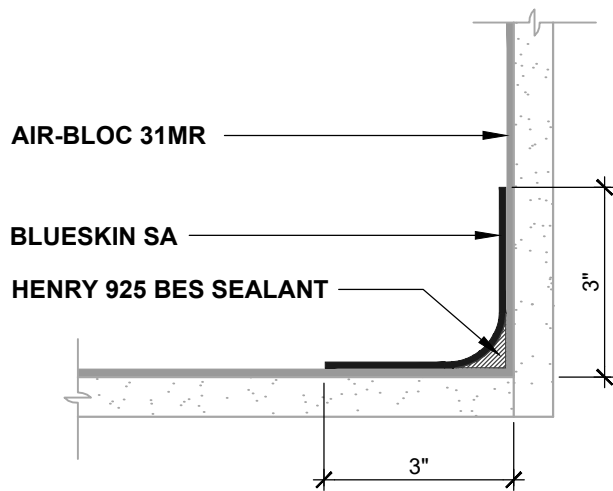


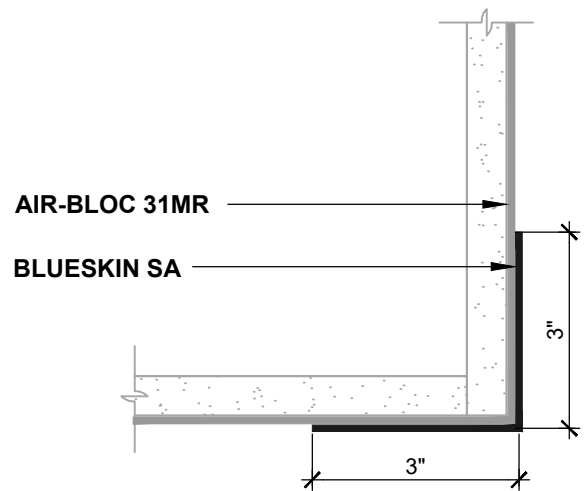
**INSIDE CORNER (PLAN VIEW)**  
FLASHING INSTALLED BEFORE WRB



**OUTSIDE CORNER (PLAN VIEW)**  
FLASHING INSTALLED BEFORE WRB



**INSIDE CORNER (PLAN VIEW)**  
FLASHING INSTALLED AFTER WRB



**OUTSIDE CORNER (PLAN VIEW)**  
FLASHING INSTALLED AFTER WRB

**NOTES:**

1. DETAIL SHOWS **AIR-BLOC 31MR FLUID APPLIED VAPOR PERMEABLE AIR BARRIER**. SUBSTRATE SHOWN IS FOR REFERENCE ONLY. ACCEPTABLE SUBSTRATES INCLUDE PLYWOOD, OSB, CONCRETE, CMU, METAL, AND EXTERIOR GRADE SHEATHING.
2. OTHER FLASHING OPTIONS INCLUDE: **BLUESKIN SA LT, BLUESKIN BUTYL FLASH OR BLUESKIN METAL CLAD**.
3. INSTALL **AIR-BLOC 31MR** TO ACHIEVE A CONTINUOUS WATER-RESISTIVE BARRIER (WRB). INSULATION, CLADDING AND OPTIONAL VAPOR BARRIER NOT SHOWN FOR CLARITY. REFER TO LOCAL CODE ORDINANCES FOR INSULATION AND VAPOR BARRIER REQUIREMENTS.
4. REFER TO PRODUCT SPECIFIC TECHNICAL DATA SHEET (TDS) AND **AIR-BLOC 31MR** GUIDE SPECIFICATION FOR INSTALLATION PROCEDURES.

**Henry**<sup>®</sup>

999 N. Pacific Coast Highway, Suite 800  
El Segundo, CA 90245  
800-486-1278 • www.henry.com

MANUFACTURER GUIDE DETAILS ARE FOR REFERENCE ONLY. HENRY DOES NOT ASSUME RESPONSIBILITY FOR ERRORS OR DEVIATIONS IN DESIGN OR ENGINEERING. PROJECT SPECIFIC VERIFICATION IS RECOMMENDED PRIOR TO INSTALLATION.

**AIR-BLOC 31MR FLUID APPLIED VAPOR PERMEABLE AIR BARRIER**

**INSIDE/OUTSIDE CORNERS**

**TYPICAL CORNER DETAILS - PLAN VIEW**  
**SELF-ADHERED FLASHING**

SCALE: N.T.S.

03-05-2020

**AB31MR-3A-1**