

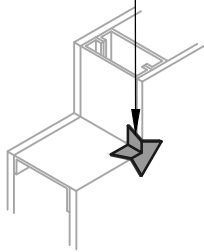
OPTION #1

GUSSET

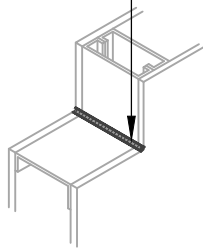
OPTION #2

SEALANT

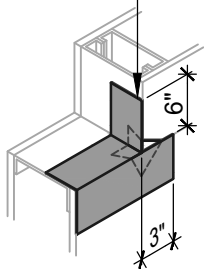
BLUESKIN SA



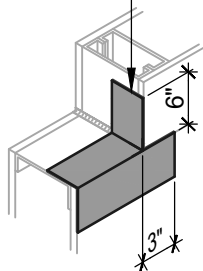
HENRY 925 BES SEALANT
OR AIR-BLOC LF



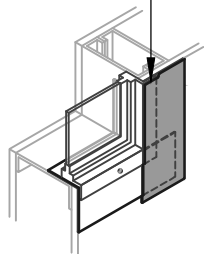
BLUESKIN SA



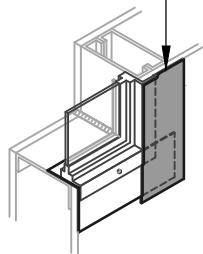
BLUESKIN SA
OR AIR-BLOC LF



BLUESKIN SA



BLUESKIN SA
OR AIR-BLOC LF



AIR-BLOC 31MR
LAP AIR BARRIER 1" ONTO
FLASHING

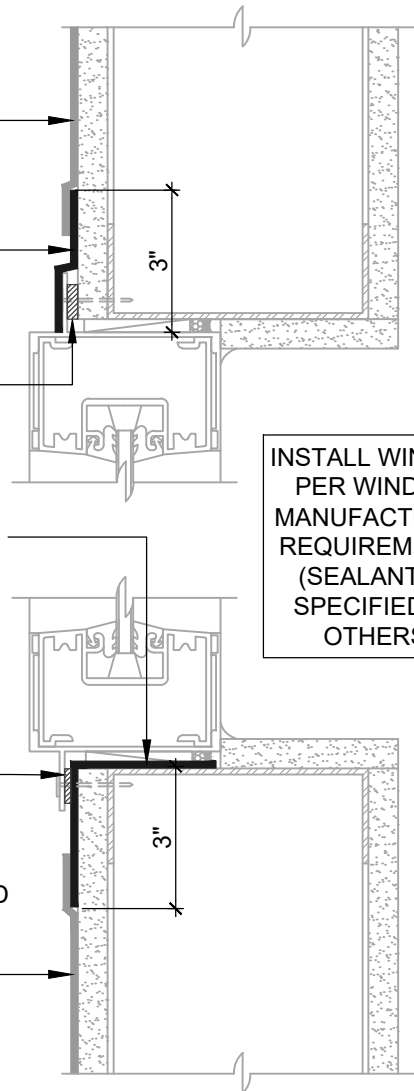
BLUESKIN SA OR
AIR-BLOC LF

SET WINDOW FLANGE
INTO A BED OF
HENRY 925 BES SEALANT

BLUESKIN SA OR AIR-BLOC LF
EXTEND FLASHING
3" (SUGGESTED) INTO ROUGH
OPENING (2" MIN)

SET WINDOW FLANGE
INTO A BED OF
HENRY 925 BES SEALANT
(APPLY INTERMITTENTLY ON
SILL FLANGE WHERE REQUIRED
TO ALLOW DRAINAGE)

AIR-BLOC 31MR
LAP AIR BARRIER 1" ONTO
FLASHING



INSTALL WINDOW
PER WINDOW
MANUFACTURER
REQUIREMENTS
(SEALANT AS
SPECIFIED BY
OTHERS)

WINDOW SILL/JAMB FLASHING

SEALANT AND GUSSET METHODS

ASTM E2112 - METHOD A (SECTION VIEW)

FLASHING INSTALLED BEFORE WRB

NOTES:

1. DETAIL SHOWS AIR-BLOC 31MR FLUID APPLIED VAPOR PERMEABLE AIR BARRIER. SUBSTRATE SHOWN IS FOR REFERENCE ONLY. ACCEPTABLE SUBSTRATES INCLUDE PLYWOOD, OSB, CONCRETE, CMU, METAL, AND EXTERIOR GRADE SHEATHING.
2. OTHER FLASHING OPTIONS INCLUDE: BLUESKIN SA LT, BLUESKIN BUTYL FLASH OR BLUESKIN METAL CLAD.
3. PRIME CUT/RAW EDGES OF EXPOSED GYPSUM SHEATHING CORE PRIOR TO AIR-BLOC LF APPLICATION. RECOMMENDED PRIMER/ADHESIVE INCLUDE: BLUESKIN SPRAY PREP.
4. HENRY WINDOW FLASHING DETAILS ARE BASED ON ASTM E2112. ACTUAL CONDITIONS MAY VARY. VERIFY PROJECT SPECIFIC WINDOW INSTALLATION REQUIREMENTS AND FLASHING COMPATIBILITY WITH DESIGN PROFESSIONAL.
5. INSTALL AIR-BLOC 31MR TO ACHIEVE A CONTINUOUS WATER-RESISTIVE BARRIER (WRB). INSULATION, CLADDING AND OPTIONAL VAPOR BARRIER NOT SHOWN FOR CLARITY. REFER TO LOCAL CODE ORDINANCES FOR INSULATION AND VAPOR BARRIER REQUIREMENTS.
6. REFER TO PRODUCT SPECIFIC TECHNICAL DATA SHEET (TDS) AND AIR-BLOC 31MR GUIDE SPECIFICATION FOR INSTALLATION PROCEDURES.



999 N. Pacific Coast Highway, Suite 800
El Segundo, CA 90245
800-486-1278 • www.henry.com

MANUFACTURER GUIDE DETAILS ARE FOR REFERENCE ONLY. HENRY DOES NOT ASSUME RESPONSIBILITY FOR ERRORS OR DEVIATIONS IN DESIGN OR ENGINEERING. PROJECT SPECIFIC VERIFICATION IS RECOMMENDED PRIOR TO INSTALLATION.

AIR-BLOC 31MR FLUID APPLIED VAPOR PERMEABLE AIR BARRIER

FLANGED WINDOW

ASTM E2112 METHOD A
FLASHING INSTALLED BEFORE WRB

SCALE: N.T.S.

03-05-2020

AB31MR-6A-A