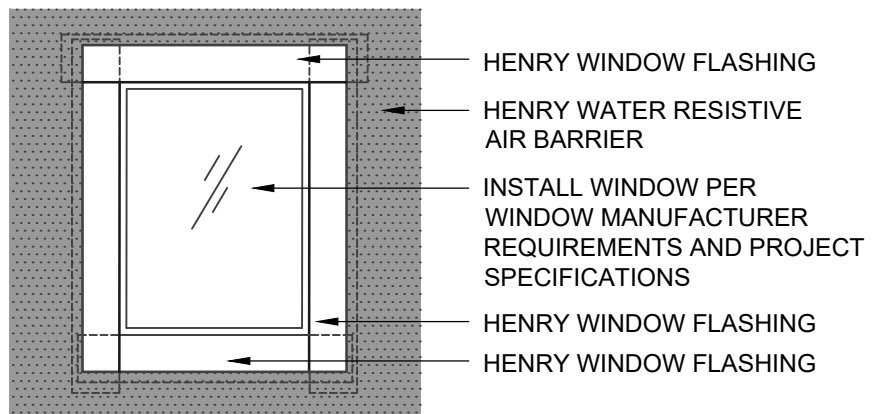


ASTM E2112 - METHOD B
FLASHING INSTALLED BEFORE WRB

Henry WATER RESISTIVE BARRIER (WRB) ASSEMBLY

HENRY WATER RESISTIVE AIR BARRIER
<ul style="list-style-type: none"> • AIR-BLOC 31MR
HENRY WINDOW FLASHING
<ul style="list-style-type: none"> • BLUESKIN SA • AIR-BLOC LF
HENRY SEALANT
<ul style="list-style-type: none"> • HENRY 925 BES SEALANT



ASTM E2112 - METHOD B (ELEVATION)
FLASHING INSTALLED BEFORE WRB

NOTES:

1. DETAIL SHOWS **AIR-BLOC 31MR FLUID APPLIED VAPOR PERMEABLE AIR BARRIER**. SUBSTRATE SHOWN IS FOR REFERENCE ONLY. ACCEPTABLE SUBSTRATES INCLUDE PLYWOOD, OSB, CONCRETE, CMU, METAL, AND EXTERIOR GRADE SHEATHING.
2. OTHER FLASHING OPTIONS INCLUDE: **BLUESKIN SA LT, BLUESKIN BUTYL FLASH OR BLUESKIN METAL CLAD**.
3. PRIME CUT/RAW EDGES OF EXPOSED GYPSUM SHEATHING CORE PRIOR TO **AIR-BLOC LF** APPLICATION. RECOMMENDED PRIMER/ADHESIVE INCLUDE: **BLUESKIN SPRAY PREP**.
4. HENRY WINDOW FLASHING DETAILS ARE BASED ON ASTM E2112. ACTUAL CONDITIONS MAY VARY. VERIFY PROJECT SPECIFIC WINDOW INSTALLATION REQUIREMENTS AND FLASHING COMPATIBILITY WITH DESIGN PROFESSIONAL.
5. REFER TO PRODUCT SPECIFIC TECHNICAL DATA SHEET (TDS) AND **AIR-BLOC 31MR** GUIDE SPECIFICATION FOR FOR INSTALLATION PROCEDURES.



999 N. Pacific Coast Highway, Suite 800
El Segundo, CA 90245
800-486-1278 • www.henry.com

MANUFACTURER GUIDE DETAILS ARE FOR REFERENCE ONLY. HENRY DOES NOT ASSUME RESPONSIBILITY FOR ERRORS OR DEVIATIONS IN DESIGN OR ENGINEERING. PROJECT SPECIFIC VERIFICATION IS RECOMMENDED PRIOR TO INSTALLATION.

AIR-BLOC 31MR FLUID APPLIED VAPOR PERMEABLE AIR BARRIER

NON-FLANGED WINDOW

**ASTM E2112 METHOD B
FLASHING INSTALLED BEFORE WRB**

SCALE: N.T.S.

03-05-2020

AB31MR-6B-C