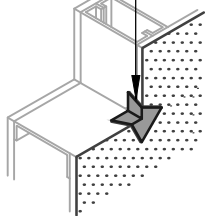


OPTION #1

GUSSET

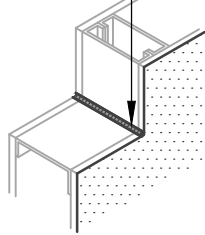
BLUESKIN SA



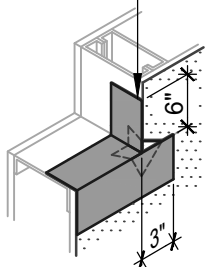
OPTION #2

SEALANT

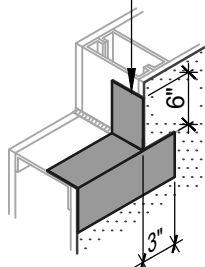
HENRY 925 BES SEALANT
OR AIR-BLOC LF



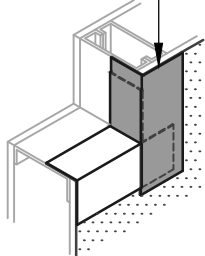
BLUESKIN SA



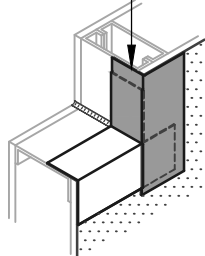
BLUESKIN SA
OR AIR-BLOC LF



BLUESKIN SA



BLUESKIN SA
OR AIR-BLOC LF

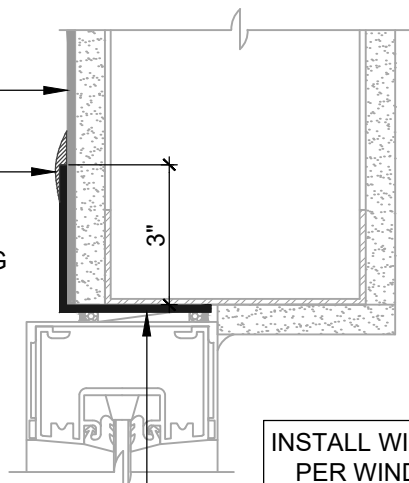


WINDOW SILL/JAMB FLASHING

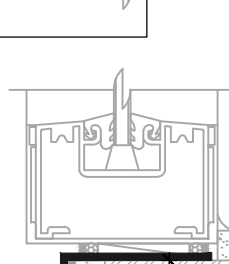
SEALANT AND GUSSET METHODS

AIR-BLOC 31MR

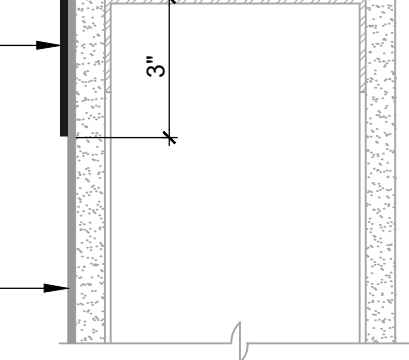
HENRY 925 BES SEALANT
OR AIR-BLOC LF
ENCAPSULATE UPPER EDGE
OF SELF-ADHERED FLASHING
REVERSE LAP



BLUESKIN SA OR
AIR-BLOC LF
EXTEND FLASHING
3" (SUGGESTED) INTO
ROUGH OPENING (2" MIN)



BLUESKIN SA OR
AIR-BLOC LF
EXTEND FLASHING
3" (SUGGESTED) INTO
ROUGH OPENING (2" MIN)



AIR-BLOC 31MR

INSTALL WINDOW
PER WINDOW
MANUFACTURER
REQUIREMENTS
(SEALANT AS
SPECIFIED BY
OTHERS)

ASTM E2112- METHOD B1 (SECTION VIEW)

FLASHING INSTALLED AFTER WRB

NOTES:

1. DETAIL SHOWS **AIR-BLOC 31MR FLUID APPLIED VAPOR PERMEABLE AIR BARRIER**. SUBSTRATE SHOWN IS FOR REFERENCE ONLY. ACCEPTABLE SUBSTRATES INCLUDE PLYWOOD, OSB, CONCRETE, CMU, METAL, AND EXTERIOR GRADE SHEATHING.
2. OTHER FLASHING OPTIONS INCLUDE: **BLUESKIN SA LT, BLUESKIN BUTYL FLASH OR BLUESKIN METAL CLAD**.
3. PRIME CUT/RAW EDGES OF EXPOSED GYPSUM SHEATHING CORE PRIOR TO **AIR-BLOC LF** APPLICATION. RECOMMENDED PRIMER/ADHESIVE INCLUDE: **BLUESKIN SPRAY PREP**.
4. HENRY WINDOW FLASHING DETAILS ARE BASED ON ASTM E2112. ACTUAL CONDITIONS MAY VARY. VERIFY PROJECT SPECIFIC WINDOW INSTALLATION REQUIREMENTS AND FLASHING COMPATIBILITY WITH DESIGN PROFESSIONAL.
5. INSTALL **AIR-BLOC 31MR** TO ACHIEVE A CONTINUOUS WATER-RESISTIVE BARRIER (WRB). INSULATION, CLADDING AND OPTIONAL VAPOR BARRIER NOT SHOWN FOR CLARITY. REFER TO LOCAL CODE ORDINANCES FOR INSULATION AND VAPOR BARRIER REQUIREMENTS.
6. REFER TO PRODUCT SPECIFIC TECHNICAL DATA SHEET (TDS) AND **AIR-BLOC 31MR** GUIDE SPECIFICATION FOR FOR INSTALLATION PROCEDURES.

Henry®

999 N. Pacific Coast Highway, Suite 800
El Segundo, CA 90245
800-486-1278 • www.henry.com

MANUFACTURER GUIDE DETAILS ARE FOR REFERENCE ONLY. HENRY DOES NOT ASSUME RESPONSIBILITY FOR ERRORS OR DEVIATIONS IN DESIGN OR ENGINEERING. PROJECT SPECIFIC VERIFICATION IS RECOMMENDED PRIOR TO INSTALLATION.

AIR-BLOC 31MR FLUID APPLIED VAPOR PERMEABLE AIR BARRIER

NON-FLANGED WINDOW

**ASTM E2112 METHOD B1
FLASHING INSTALLED AFTER WRB**

SCALE: N.T.S.

03-05-2020

AB31MR-6B1-A