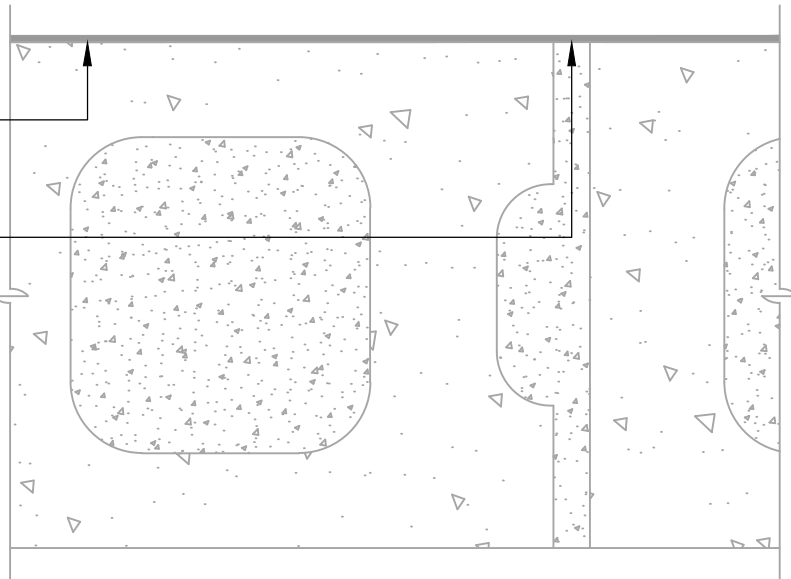


AIR-BLOC 31MR

FILL GROUT AND STRIKE
MORTAR FULL AND FLUSH
WITH FACE OF BLOCK
(SEE NOTE #2)

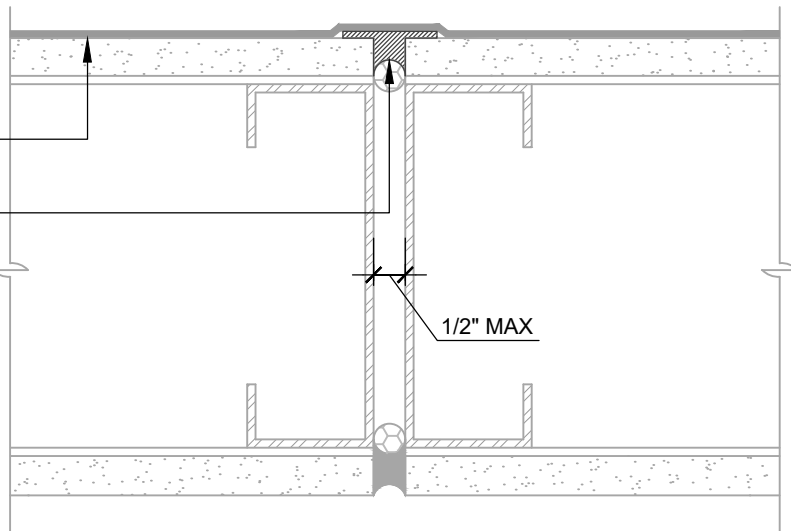


CMU MORTAR JOINTS (PLAN VIEW)

STRIKE MORTAR FULL AND FLUSH

AIR-BLOC 31MR

**HENRY 925 BES SEALANT
OR AIR-BLOC LF**



GAPS UP TO 1/2" MAX (PLAN VIEW)

FLASHING INSTALLED BEFORE WRB

NOTES:

1. DETAIL SHOWS **AIR-BLOC 31MR FLUID APPLIED VAPOR PERMEABLE AIR BARRIER**. SUBSTRATE SHOWN IS FOR REFERENCE ONLY. ACCEPTABLE SUBSTRATES INCLUDE PLYWOOD, OSB, CONCRETE, CMU, METAL, AND EXTERIOR GRADE SHEATHING.
2. FILL GROUT AND STRIKE CMU JOINTS FULL AND FLUSH TO CREATE A CONTINUOUS SUBSTRATE. REFER TO PRODUCT SPECIFIC TECHNICAL DATA SHEET FOR CURE TIME PRIOR TO AIR BARRIER INSTALLATION.
3. INSTALL **AIR-BLOC 31MR** TO ACHIEVE A CONTINUOUS WATER-RESISTIVE BARRIER (WRB). INSULATION, CLADDING AND OPTIONAL VAPOR BARRIER NOT SHOWN FOR CLARITY. REFER TO LOCAL CODE ORDINANCES FOR INSULATION AND VAPOR BARRIER REQUIREMENTS.
4. REFER TO PRODUCT SPECIFIC TECHNICAL DATA SHEET (TDS) AND **AIR-BLOC 31MR** GUIDE SPECIFICATION FOR INSTALLATION PROCEDURES.

Henry[®]

999 N. Pacific Coast Highway, Suite 800
El Segundo, CA 90245
800-486-1278 • www.henry.com

MANUFACTURER GUIDE DETAILS ARE FOR REFERENCE ONLY. HENRY DOES NOT ASSUME RESPONSIBILITY FOR ERRORS OR DEVIATIONS IN DESIGN OR ENGINEERING. PROJECT SPECIFIC VERIFICATION IS RECOMMENDED PRIOR TO INSTALLATION.

AIR-BLOC 31MR FLUID APPLIED VAPOR PERMEABLE AIR BARRIER

NON-MOVING JOINTS

**CMU MORTAR JOINTS AND
SUBSTRATE GAPS UP TO 1/2" WIDE MAXIMUM**

SCALE: N.T.S.

03-05-2020

AB31MR-8A