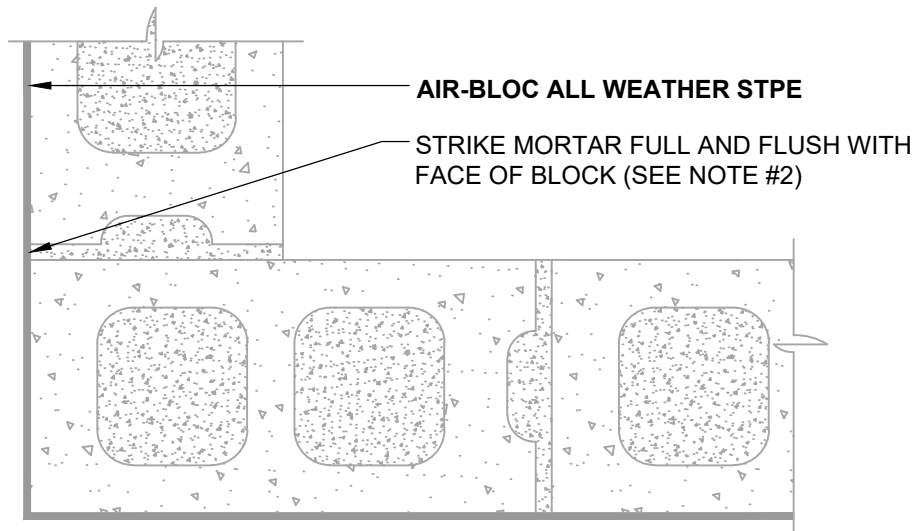


INSIDE CORNER (PLAN VIEW)
STRIKE MORTAR FULL AND FLUSH



OUTSIDE CORNER (PLAN VIEW)
STRIKE MORTAR FULL AND FLUSH

NOTES:

1. DETAIL SHOWS **AIR-BLOC ALL WEATHER STPE FLUID APPLIED VAPOR PERMEABLE AIR BARRIER**. THIS DETAIL IS FOR CMU SUBSTRATES ONLY. REFER TO ABSTPE-3A-1 AND ABSTPE-3A-2 FOR OTHER SUBSTRATE FLASHINGS.
2. FILL GROUT AND STRIKE CMU JOINTS FULL AND FLUSH TO CREATE A CONTINUOUS SUBSTRATE. REFER TO PRODUCT SPECIFIC TECHNICAL DATA SHEET FOR CURE TIME PRIOR TO AIR BARRIER INSTALLATION.
3. INSULATION, CLADDING AND OPTIONAL VAPOR BARRIER NOT SHOWN FOR CLARITY. REFER TO LOCAL CODE ORDINANCES FOR INSULATION AND VAPOR BARRIER REQUIREMENTS.
4. REFER TO PRODUCT SPECIFIC TECHNICAL DATA SHEET (TDS), **AIR-BLOC ALL WEATHER STPE GUIDE SPECIFICATION** AND **AIR-BLOC ALL WEATHER STPE INSTALLATION MANUAL** FOR INSTALLATION PROCEDURES.

MANUFACTURER GUIDE DETAILS ARE FOR REFERENCE ONLY. HENRY DOES NOT ASSUME RESPONSIBILITY FOR ERRORS OR DEVIATIONS IN DESIGN OR ENGINEERING. PROJECT SPECIFIC VERIFICATION IS RECOMMENDED PRIOR TO INSTALLATION.

AIR-BLOC ALL WEATHER STPE

INSIDE/OUTSIDE CORNERS
CONCRETE MASONRY UNITS (CMU)
STRIKE MASONRY JOINTS FLUSH

SCALE: N.T.S.

01-10-2020

ABSTPE-3B

Henry[®]

999 N. Pacific Coast Highway, Suite 800
El Segundo, CA 90245
800-486-1278 • www.henry.com