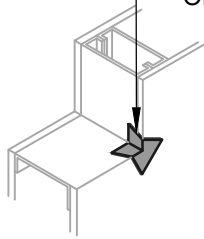


OPTION #1

GUSSET

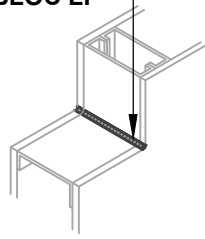
BLUESKIN SA



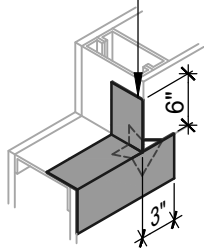
OPTION #2

SEALANT

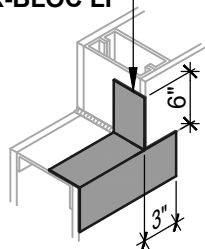
HENRY 925 BES SEALANT
OR AIR-BLOC LF



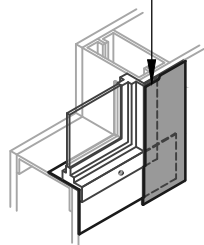
BLUESKIN SA



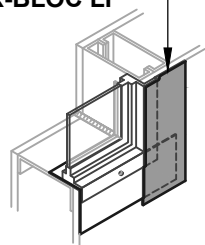
BLUESKIN SA
OR AIR-BLOC LF



BLUESKIN SA



BLUESKIN SA
OR AIR-BLOC LF



AIR-BLOC ALL WEATHER STPE (LAP AIR BARRIER 1" ONTO FLASHING)

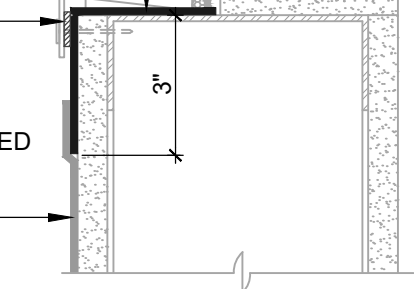
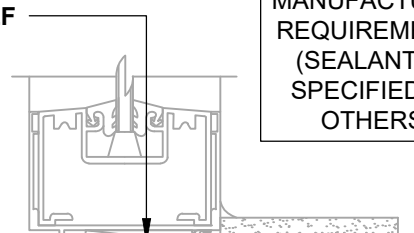
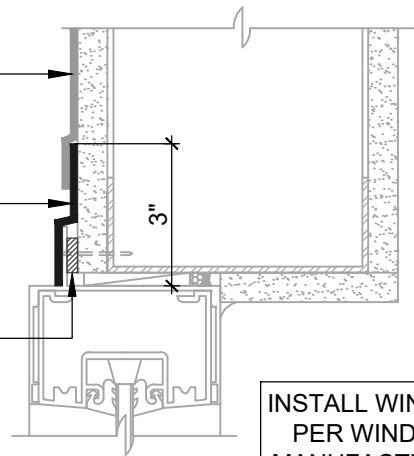
BLUESKIN SA OR AIR-BLOC LF (SEE NOTE #6)

SET WINDOW FLANGE INTO A BED OF HENRY 925 BES SEALANT

BLUESKIN SA OR AIR-BLOC LF EXTEND FLASHING 3" (SUGGESTED) INTO ROUGH OPENING (2" MIN) (SEE NOTE #6)

SET WINDOW FLANGE INTO A BED OF HENRY 925 BES SEALANT (APPLY INTERMITTENTLY ON SILL FLANGE WHERE REQUIRED TO ALLOW DRAINAGE)

AIR-BLOC ALL WEATHER STPE (LAP AIR BARRIER 1" ONTO FLASHING)



INSTALL WINDOW PER WINDOW MANUFACTURER REQUIREMENTS (SEALANT AS SPECIFIED BY OTHERS)

WINDOW SILL/JAMB FLASHING

GUSSET CORNER FLASHING

ASTM E2112 - METHOD A (SECTION VIEW)

FLASHING INSTALLED BEFORE WRB

NOTES:

1. DETAIL SHOWS **AIR-BLOC ALL WEATHER STPE FLUID APPLIED VAPOR PERMEABLE AIR BARRIER**. SUBSTRATE SHOWN IS FOR REFERENCE ONLY. ACCEPTABLE SUBSTRATES INCLUDE PLYWOOD, OSB, CONCRETE, CMU, METAL, AND EXTERIOR GRADE SHEATHING.
2. ADHESION OF COMPONENTS DEPICTED IN THIS DETAIL PROGRESSIVELY INCREASE AFTER INITIAL APPLICATION. ALLOW A MINIMUM OF 7 DAYS AFTER INSTALLATION TO CONDUCT ADHESION TESTS IF REQUIRED.
3. PRIME CUT/RAW EDGES OF EXPOSED GYPSUM SHEATHING CORE PRIOR TO **AIR-BLOC LF** APPLICATION. RECOMMENDED PRIMER/ADHESIVE INCLUDE: **BLUESKIN SPRAY PREP**.
4. HENRY WINDOW FLASHING DETAILS ARE BASED ON ASTM E2112. ACTUAL CONDITIONS MAY VARY. VERIFY PROJECT SPECIFIC WINDOW INSTALLATION REQUIREMENTS AND FLASHING COMPATIBILITY WITH DESIGN PROFESSIONAL.
5. OTHER FLASHING OPTIONS INCLUDE: **BLUESKIN SA LT, BLUESKIN METAL CLAD OR BLUESKIN BUTYL FLASH**.
6. HENRY SELF-ADHERED MEMBRANES (INCLUDING **BLUESKIN SA, BLUESKIN SA LT, BLUESKIN TWF, BLUESKIN METAL CLAD OR BLUESKIN BUTYL FLASH**) MUST BE INSTALLED WITH **AQUATAC PRIMER** WHEN APPLIED ONTO CURED **AIR-BLOC ALL WEATHER STPE**.
7. INSULATION, CLADDING AND OPTIONAL VAPOR BARRIER NOT SHOWN FOR CLARITY. REFER TO LOCAL CODE ORDINANCES FOR INSULATION AND VAPOR BARRIER REQUIREMENTS.
8. REFER TO PRODUCT SPECIFIC TECHNICAL DATA SHEET (TDS), **AIR-BLOC ALL WEATHER STPE GUIDE SPECIFICATION** AND **AIR-BLOC ALL WEATHER STPE INSTALLATION MANUAL** FOR INSTALLATION PROCEDURES.

Henry®

999 N. Pacific Coast Highway, Suite 800
El Segundo, CA 90245
800-486-1278 • www.henry.com

MANUFACTURER GUIDE DETAILS ARE FOR REFERENCE ONLY. HENRY DOES NOT ASSUME RESPONSIBILITY FOR ERRORS OR DEVIATIONS IN DESIGN OR ENGINEERING. PROJECT SPECIFIC VERIFICATION IS RECOMMENDED PRIOR TO INSTALLATION.

AIR-BLOC ALL WEATHER STPE

FLANGED WINDOW

ASTM E2112 METHOD A FLASHING INSTALLED BEFORE WRB

SCALE: N.T.S.

01-10-2020

ABSTPE-6A-A