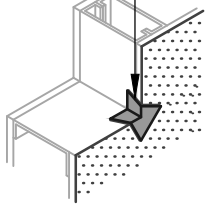


OPTION #1

GUSSET

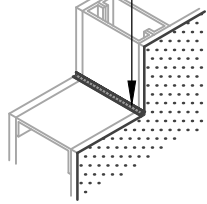
BLUESKIN SA



OPTION #2

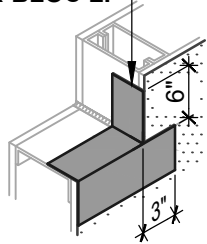
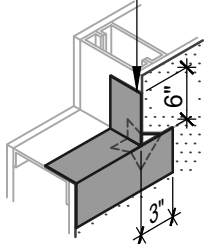
SEALANT

HENRY 925 BES SEALANT
OR AIR-BLOC LF



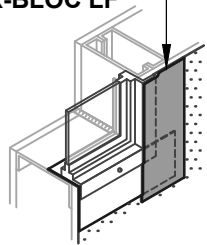
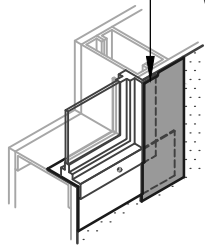
BLUESKIN SA

BLUESKIN SA
OR AIR-BLOC LF



BLUESKIN SA

BLUESKIN SA
OR AIR-BLOC LF



WINDOW SILL/JAMB FLASHING

GUSSET CORNER FLASHING

NOTES:

1. DETAIL SHOWS **AIR-BLOC ALL WEATHER STPE FLUID APPLIED VAPOR PERMEABLE AIR BARRIER**. SUBSTRATE SHOWN IS FOR REFERENCE ONLY. ACCEPTABLE SUBSTRATES INCLUDE PLYWOOD, OSB, CONCRETE, CMU, METAL, AND EXTERIOR GRADE SHEATHING.
2. ADHESION OF COMPONENTS DEPICTED IN THIS DETAIL PROGRESSIVELY INCREASE AFTER INITIAL APPLICATION. ALLOW A MINIMUM OF 7 DAYS AFTER INSTALLATION TO CONDUCT ADHESION TESTS IF REQUIRED.
3. PRIME CUT/RAW EDGES OF EXPOSED GYPSUM SHEATHING CORE PRIOR TO **AIR-BLOC LF** APPLICATION. RECOMMENDED PRIMER/ADHESIVE INCLUDE: **BLUESKIN SPRAY PREP**.
4. HENRY WINDOW FLASHING DETAILS ARE BASED ON ASTM E2112. ACTUAL CONDITIONS MAY VARY. VERIFY PROJECT SPECIFIC WINDOW INSTALLATION REQUIREMENTS AND FLASHING COMPATIBILITY WITH DESIGN PROFESSIONAL.
5. OTHER FLASHING OPTIONS INCLUDE: **BLUESKIN SA LT**, **BLUESKIN METAL CLAD** OR **BLUESKIN BUTYL FLASH**.
6. HENRY SELF-ADHERED MEMBRANES (INCLUDING **BLUESKIN SA**, **BLUESKIN SA LT**, **BLUESKIN TWF**, **BLUESKIN METAL CLAD** OR **BLUESKIN BUTYL FLASH**) MUST BE INSTALLED WITH **AQUATAC PRIMER** WHEN APPLIED ONTO CURED **AIR-BLOC ALL WEATHER STPE**.
7. INSULATION, CLADDING AND OPTIONAL VAPOR BARRIER NOT SHOWN FOR CLARITY. REFER TO LOCAL CODE ORDINANCES FOR INSULATION AND VAPOR BARRIER REQUIREMENTS.
8. REFER TO PRODUCT SPECIFIC TECHNICAL DATA SHEET (TDS), **AIR-BLOC ALL WEATHER STPE GUIDE SPECIFICATION** AND **AIR-BLOC ALL WEATHER STPE INSTALLATION MANUAL** FOR INSTALLATION PROCEDURES.

AIR-BLOC ALL WEATHER STPE

HENRY 925 BES SEALANT, AIR-BLOC LF OR AIR-BLOC ALL WEATHER STPE (SEE NOTE #6 AND DETAIL ABSTPE-7A1 FOR **AIR-BLOC ALL WEATHER STPE REVERSE LAP INSTALLATION INSTRUCTIONS**)

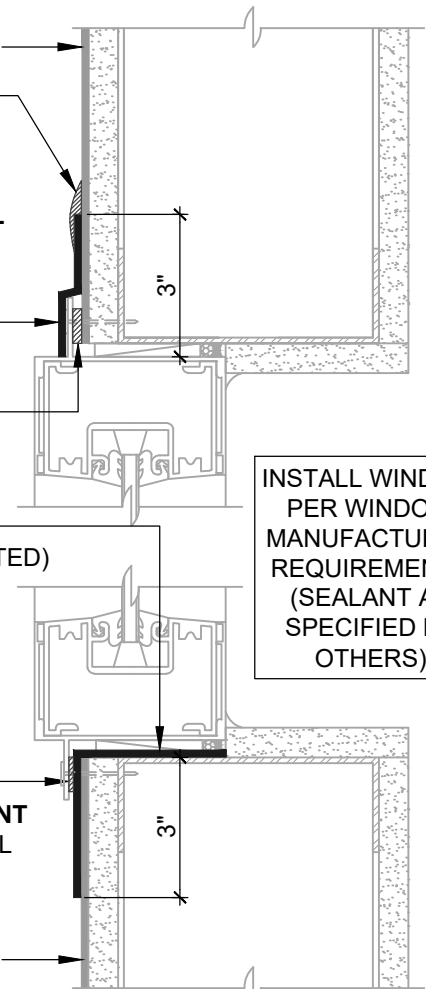
BLUESKIN SA OR AIR-BLOC LF (SEE NOTE #6)

SET WINDOW FLANGE INTO A BED OF **HENRY 925 BES SEALANT**

BLUESKIN SA OR AIR-BLOC LF EXTEND FLASHING 3" (SUGGESTED) INTO ROUGH OPENING (2" MIN) (SEE NOTE #6 AND DETAIL ABSTPE-7A1 FOR **AIR-BLOC ALL WEATHER STPE REVERSE LAP INSTALLATION INSTRUCTIONS**)

SET WINDOW FLANGE INTO A BED OF **HENRY 925 BES SEALANT** APPLY INTERMITTENTLY ON SILL FLANGE WHERE REQUIRED TO ALLOW DRAINAGE

AIR-BLOC ALL WEATHER STPE



INSTALL WINDOW PER WINDOW MANUFACTURER REQUIREMENTS (SEALANT AS SPECIFIED BY OTHERS)

ASTM E2112- METHOD A1 (SECTION VIEW)

FLASHING INSTALLED AFTER WRB



999 N. Pacific Coast Highway, Suite 800
El Segundo, CA 90245
800-486-1278 • www.henry.com

MANUFACTURER GUIDE DETAILS ARE FOR REFERENCE ONLY. HENRY DOES NOT ASSUME RESPONSIBILITY FOR ERRORS OR DEVIATIONS IN DESIGN OR ENGINEERING. PROJECT SPECIFIC VERIFICATION IS RECOMMENDED PRIOR TO INSTALLATION.

AIR-BLOC ALL WEATHER STPE

FLANGED WINDOW

**ASTM E2112 METHOD A1
FLASHING INSTALLED AFTER WRB**

SCALE: N.T.S.

01-10-2020

ABSTPE-6A1-A