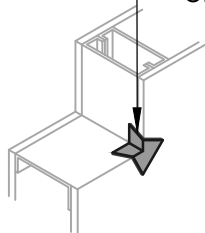


**OPTION #1**

GUSSET

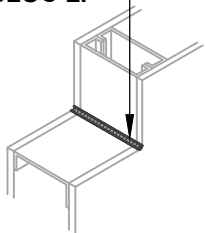
BLUESKIN SA



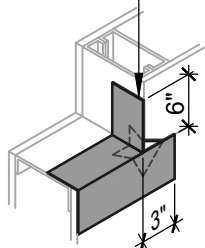
**OPTION #2**

SEALANT

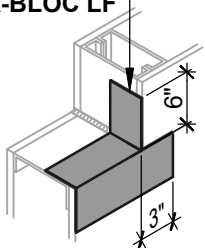
HENRY 925 BES SEALANT  
OR AIR-BLOC LF



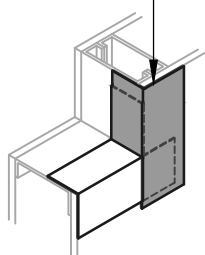
BLUESKIN SA



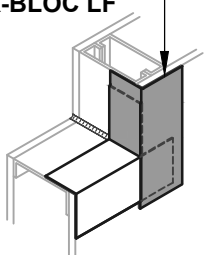
BLUESKIN SA  
OR AIR-BLOC LF



BLUESKIN SA



BLUESKIN SA  
OR AIR-BLOC LF



**SILL FLASHING OPTION #2**

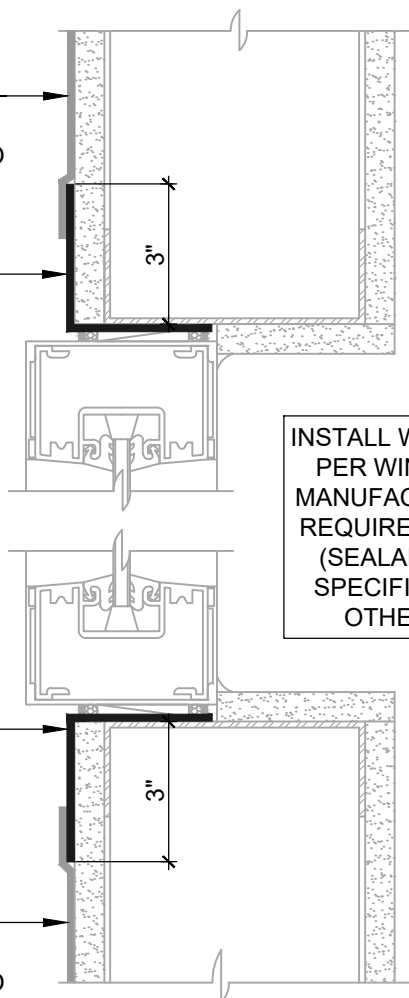
GUSSET CORNER FLASHING

AIR-BLOC ALL WEATHER STPE  
LAP AIR BARRIER 1" ONTO  
FLASHING

BLUESKIN SA OR  
AIR-BLOC LF  
EXTEND FLASHING  
3" (SUGGESTED) INTO  
ROUGH OPENING (2" MIN)  
(SEE NOTE #6)

BLUESKIN SA OR  
AIR-BLOC LF  
EXTEND FLASHING  
3" (SUGGESTED) INTO  
ROUGH OPENING (2" MIN)  
(SEE NOTE #6)

AIR-BLOC ALL WEATHER STPE  
LAP AIR BARRIER 1" ONTO  
FLASHING



INSTALL WINDOW  
PER WINDOW  
MANUFACTURER  
REQUIREMENTS  
(SEALANT AS  
SPECIFIED BY  
OTHERS)

**ASTM E2112- METHOD B (SECTION VIEW)**

FLASHING INSTALLED BEFORE WRB

NOTES:

1. DETAIL SHOWS AIR-BLOC ALL WEATHER STPE FLUID APPLIED VAPOR PERMEABLE AIR BARRIER. SUBSTRATE SHOWN IS FOR REFERENCE ONLY. ACCEPTABLE SUBSTRATES INCLUDE PLYWOOD, OSB, CONCRETE, CMU, METAL, AND EXTERIOR GRADE SHEATHING.
2. ADHESION OF COMPONENTS DEPICTED IN THIS DETAIL PROGRESSIVELY INCREASE AFTER INITIAL APPLICATION. ALLOW A MINIMUM OF 7 DAYS AFTER INSTALLATION TO CONDUCT ADHESION TESTS IF REQUIRED.
3. PRIME CUT/RAW EDGES OF EXPOSED GYPSUM SHEATHING CORE PRIOR TO AIR-BLOC LF APPLICATION. RECOMMENDED PRIMER/ADHESIVE INCLUDE: BLUESKIN SPRAY PREP.
4. HENRY WINDOW FLASHING DETAILS ARE BASED ON ASTM E2112. ACTUAL CONDITIONS MAY VARY. VERIFY PROJECT SPECIFIC WINDOW INSTALLATION REQUIREMENTS AND FLASHING COMPATIBILITY WITH DESIGN PROFESSIONAL.
5. OTHER FLASHING OPTIONS INCLUDE: BLUESKIN SA LT, BLUESKIN METAL CLAD OR BLUESKIN BUTYL FLASH.
6. HENRY SELF-ADHERED MEMBRANES (INCLUDING BLUESKIN SA, BLUESKIN SA LT, BLUESKIN TWF, BLUESKIN METAL CLAD OR BLUESKIN BUTYL FLASH) MUST BE INSTALLED WITH AQUATAC PRIMER WHEN APPLIED ONTO CURED AIR-BLOC ALL WEATHER STPE.
7. INSULATION, CLADDING AND OPTIONAL VAPOR BARRIER NOT SHOWN FOR CLARITY. REFER TO LOCAL CODE ORDINANCES FOR INSULATION AND VAPOR BARRIER REQUIREMENTS.
8. REFER TO PRODUCT SPECIFIC TECHNICAL DATA SHEET (TDS), AIR-BLOC ALL WEATHER STPE GUIDE SPECIFICATION AND AIR-BLOC ALL WEATHER STPE INSTALLATION MANUAL FOR INSTALLATION PROCEDURES.



999 N. Pacific Coast Highway, Suite 800  
El Segundo, CA 90245  
800-486-1278 • www.henry.com

MANUFACTURER GUIDE DETAILS ARE FOR REFERENCE ONLY. HENRY DOES NOT ASSUME RESPONSIBILITY FOR ERRORS OR DEVIATIONS IN DESIGN OR ENGINEERING. PROJECT SPECIFIC VERIFICATION IS RECOMMENDED PRIOR TO INSTALLATION.

AIR-BLOC ALL WEATHER STPE

NON-FLANGED WINDOW

ASTM E2112 METHOD B  
FLASHING INSTALLED BEFORE WRB

SCALE: N.T.S.

01-10-2020

ABSTPE-6B-A