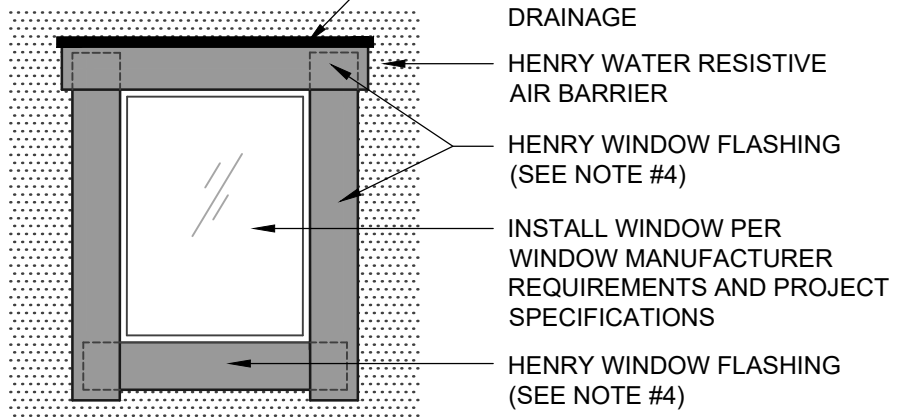


**ASTM E2112 - METHOD B1**  
FLASHING INSTALLED AFTER WRB

**Henry** WATER RESISTIVE BARRIER (WRB) ASSEMBLY

<b>HENRY WATER RESISTIVE AIR BARRIER</b>
<ul style="list-style-type: none"> <li>• AIR-BLOC ALL WEATHER STPE</li> </ul>
<b>HENRY WINDOW FLASHING</b>
<ul style="list-style-type: none"> <li>• <b>BLUESKIN SA</b> (SEE NOTE #4 AND REFER TO DETAIL ABSTPE-7A1 FOR AIR-BLOC ALL WEATHER STPE REVERSE LAP INSTALLATION INSTRUCTIONS)</li> <li>• AIR-BLOC LF</li> </ul>
<b>HENRY SEALANT</b>
<ul style="list-style-type: none"> <li>• HENRY 925 BES SEALANT</li> </ul>



**ASTM E2112 - METHOD B1 (ELEVATION)**  
FLASHING INSTALLED AFTER WRB

**NOTES:**

1. DETAIL SHOWS **AIR-BLOC ALL WEATHER STPE FLUID APPLIED VAPOR PERMEABLE AIR BARRIER**. SUBSTRATE SHOWN IS FOR REFERENCE ONLY. ACCEPTABLE SUBSTRATES INCLUDE PLYWOOD, OSB, CONCRETE, CMU, METAL, AND EXTERIOR GRADE SHEATHING.
2. ADHESION OF COMPONENTS DEPICTED IN THIS DETAIL PROGRESSIVELY INCREASE AFTER INITIAL APPLICATION. ALLOW A MINIMUM OF 7 DAYS AFTER INSTALLATION TO CONDUCT ADHESION TESTS IF REQUIRED.
3. OTHER FLASHING OPTIONS INCLUDE: **BLUESKIN SA LT, BLUESKIN METAL CLAD OR BLUESKIN BUTYL FLASH**.
4. HENRY SELF-ADHERED MEMBRANES (INCLUDING **BLUESKIN SA, BLUESKIN SA LT, BLUESKIN TWF, BLUESKIN METAL CLAD OR BLUESKIN BUTYL FLASH**) MUST BE INSTALLED WITH **AQUATAC PRIMER** WHEN APPLIED ONTO CURED **AIR-BLOC ALL WEATHER STPE**.
5. REFER TO PRODUCT SPECIFIC TECHNICAL DATA SHEET (TDS), **AIR-BLOC ALL WEATHER STPE** GUIDE SPECIFICATION AND **AIR-BLOC ALL WEATHER STPE** INSTALLATION MANUAL FOR INSTALLATION PROCEDURES.



999 N. Pacific Coast Highway, Suite 800  
El Segundo, CA 90245  
800-486-1278 • www.henry.com

MANUFACTURER GUIDE DETAILS ARE FOR REFERENCE ONLY. HENRY DOES NOT ASSUME RESPONSIBILITY FOR ERRORS OR DEVIATIONS IN DESIGN OR ENGINEERING. PROJECT SPECIFIC VERIFICATION IS RECOMMENDED PRIOR TO INSTALLATION.

**AIR-BLOC ALL WEATHER STPE**

**NON-FLANGED WINDOW**

**ASTM E2112 METHOD B1**  
**FLASHING INSTALLED AFTER WRB**

SCALE: N.T.S.

01-10-2020

**ABSTPE-6B1-C**