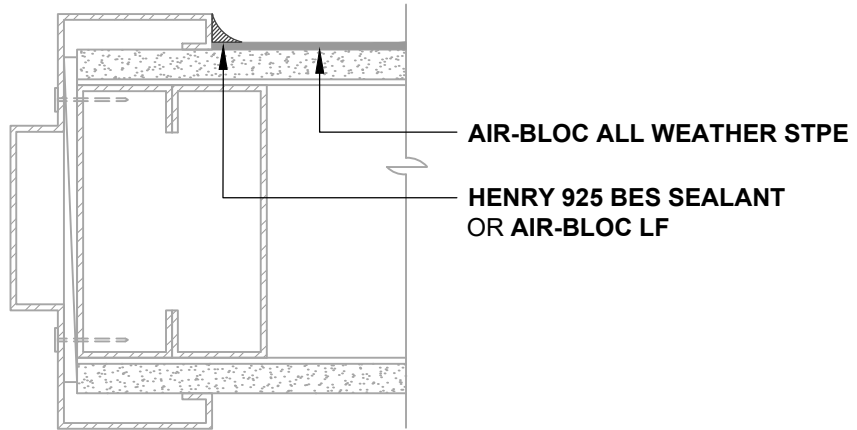


**ASTM E2112- METHOD B1 (PLAN VIEW)**  
FLASHING INSTALLED BEFORE WRB

**ASTM E2112- METHOD B1 (PLAN VIEW)**  
FLASHING INSTALLED AFTER WRB



**ASTM E2112- METHOD A (PLAN VIEW)**  
WRB INSTALLED AFTER DOOR FRAME

**NOTES:**

1. DETAIL SHOWS **AIR-BLOC ALL WEATHER STPE FLUID APPLIED VAPOR PERMEABLE AIR BARRIER**. SUBSTRATE SHOWN IS FOR REFERENCE ONLY. ACCEPTABLE SUBSTRATES INCLUDE PLYWOOD, OSB, CONCRETE, CMU, METAL, AND EXTERIOR GRADE SHEATHING.
2. ADHESION OF COMPONENTS DEPICTED IN THIS DETAIL PROGRESSIVELY INCREASE AFTER INITIAL APPLICATION. ALLOW A MINIMUM OF 7 DAYS AFTER INSTALLATION TO CONDUCT ADHESION TESTS IF REQUIRED.
3. PRIME CUT/RAW EDGES OF EXPOSED GYPSUM SHEATHING CORE PRIOR TO **AIR-BLOC LF** APPLICATION. RECOMMENDED PRIMER/ADHESIVE INCLUDE: **BLUESKIN SPRAY PREP**.
4. HENRY DOOR FLASHING DETAILS ARE BASED ON ASTM E2112. ACTUAL CONDITIONS MAY VARY. VERIFY PROJECT SPECIFIC WINDOW INSTALLATION REQUIREMENTS AND FLASHING COMPATIBILITY WITH DESIGN PROFESSIONAL.
5. OTHER FLASHING OPTIONS INCLUDE: **BLUESKIN SA LT, BLUESKIN METAL CLAD OR BLUESKIN BUTYL FLASH**.
6. HENRY SELF-ADHERED MEMBRANES (INCLUDING **BLUESKIN SA, BLUESKIN SA LT, BLUESKIN TWF, BLUESKIN METAL CLAD OR BLUESKIN BUTYL FLASH**) MUST BE INSTALLED WITH **AQUATAC PRIMER** WHEN APPLIED ONTO CURED **AIR-BLOC ALL WEATHER STPE**.
7. INSULATION, CLADDING AND OPTIONAL VAPOR BARRIER NOT SHOWN FOR CLARITY. REFER TO LOCAL CODE ORDINANCES FOR INSULATION AND VAPOR BARRIER REQUIREMENTS.
8. REFER TO PRODUCT SPECIFIC TECHNICAL DATA SHEET (TDS), **AIR-BLOC ALL WEATHER STPE GUIDE SPECIFICATION** AND **AIR-BLOC ALL WEATHER STPE INSTALLATION MANUAL** FOR INSTALLATION PROCEDURES.



999 N. Pacific Coast Highway, Suite 800  
El Segundo, CA 90245  
800-486-1278 • www.henry.com

MANUFACTURER GUIDE DETAILS ARE FOR REFERENCE ONLY. HENRY DOES NOT ASSUME RESPONSIBILITY FOR ERRORS OR DEVIATIONS IN DESIGN OR ENGINEERING. PROJECT SPECIFIC VERIFICATION IS RECOMMENDED PRIOR TO INSTALLATION.

**AIR-BLOC ALL WEATHER STPE**

**DOOR JAMB**  
**TYPICAL JAMB FLASHING OPTIONS**  
**HOLLOW METAL DOOR JAMB**

SCALE: N.T.S. 01-10-2020

**ABSTPE-6C**