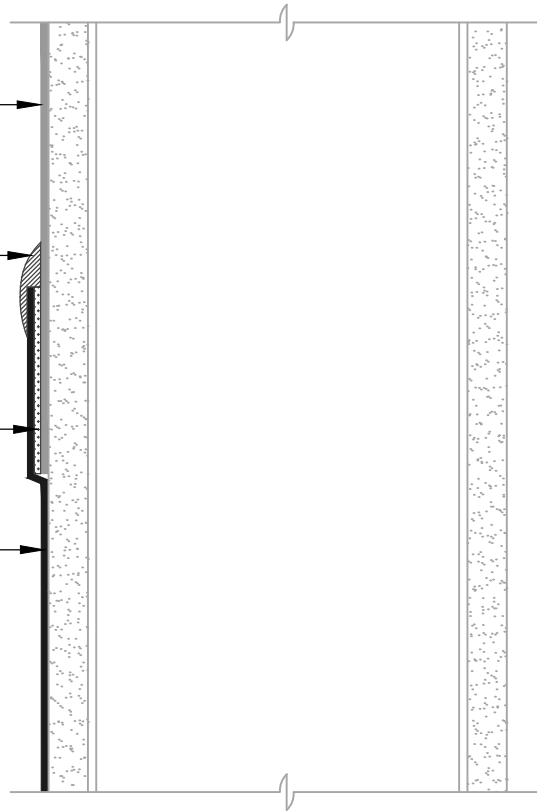


**AIR-BLOC ALL WEATHER STPE** →

**AIR-BLOC LF, HENRY 925 BES SEALANT  
OR AIR-BLOC ALL WEATHER STPE**  
ENCAPSULATE UPPER EDGE OF  
SELF-ADHERED FLASHING REVERSE LAP

**AQUATAC PRIMER (SEE NOTE #2)** →

**BLUESKIN SA OR  
BLUESKIN TWF**  
(SEE NOTE #6) →



**REVERSE LAPS (SECTION VIEW)**

FLASHING INSTALLED AFTER WRB

NOTES:

1. DETAIL SHOWS **AIR-BLOC ALL WEATHER STPE FLUID APPLIED VAPOR PERMEABLE AIR BARRIER**. SUBSTRATE SHOWN IS FOR REFERENCE ONLY. ACCEPTABLE SUBSTRATES INCLUDE PLYWOOD, OSB, CONCRETE, CMU, METAL, AND EXTERIOR GRADE SHEATHING.
2. ADHESION OF COMPONENTS DEPICTED IN THIS DETAIL PROGRESSIVELY INCREASE AFTER INITIAL APPLICATION. ALLOW A MINIMUM OF 7 DAYS AFTER INSTALLATION TO CONDUCT ADHESION TESTS IF REQUIRED.
3. REVERSE LAP INSTALLATION GUIDELINES:
  - 3.1. CURE **AIR-BLOC ALL WEATHER STPE** FOR A MINIMUM OF 24 HOURS.
  - 3.2. APPLY **AQUATAC PRIMER** ONTO AREA OF ANTICIPATED FLASHING INSTALLATION. ALLOW PRIMER TO CURE.
  - 3.3. APPLY SELF-ADHERED FLASHING ONTO CURED **AQUATAC PRIMER** AND IMMEDIATELY PRESSURE ROLL SELF-ADHERED FLASHING.
4. ENCAPSULATE UPPER EDGE OF SELF-ADHERED FLASHING WITH **AIR-BLOC ALL WEATHER STPE**.
5. OTHER FLASHING OPTIONS INCLUDE: **BLUESKIN SA LT, BLUESKIN METAL CLAD OR BLUESKIN BUTYL FLASH**.
6. HENRY SELF-ADHERED MEMBRANES (INCLUDING **BLUESKIN SA, BLUESKIN SA LT, BLUESKIN TWF, BLUESKIN METAL CLAD OR BLUESKIN BUTYL FLASH**) MUST BE INSTALLED WITH **AQUATAC PRIMER** WHEN APPLIED ONTO CURED **AIR-BLOC ALL WEATHER STPE**.
7. INSULATION, CLADDING AND OPTIONAL VAPOR BARRIER NOT SHOWN FOR CLARITY. REFER TO LOCAL CODE ORDINANCES FOR INSULATION AND VAPOR BARRIER REQUIREMENTS.
8. REFER TO PRODUCT SPECIFIC TECHNICAL DATA SHEET (TDS), **AIR-BLOC ALL WEATHER STPE GUIDE SPECIFICATION** AND **AIR-BLOC ALL WEATHER STPE INSTALLATION MANUAL** FOR INSTALLATION PROCEDURES.

**Henry**<sup>®</sup>

999 N. Pacific Coast Highway, Suite 800  
El Segundo, CA 90245  
800-486-1278 • www.henry.com

MANUFACTURER GUIDE DETAILS ARE FOR REFERENCE ONLY. HENRY DOES NOT ASSUME RESPONSIBILITY FOR ERRORS OR DEVIATIONS IN DESIGN OR ENGINEERING. PROJECT SPECIFIC VERIFICATION IS RECOMMENDED PRIOR TO INSTALLATION.

**AIR-BLOC ALL WEATHER STPE**

**REVERSE LAP**

**SELF-ADHERED FLASHING  
LAPPING ONTO AIR-BLOC ALL WEATHER STPE**

SCALE: N.T.S.

01-10-2020

**ABSTPE-7A1**