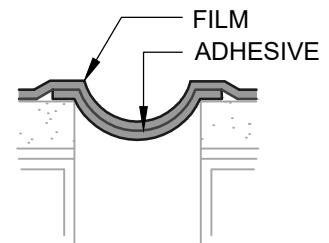


**GAPS UP TO 1" MAX (PLAN VIEW)**  
FLASHING INSTALLED BEFORE WRB

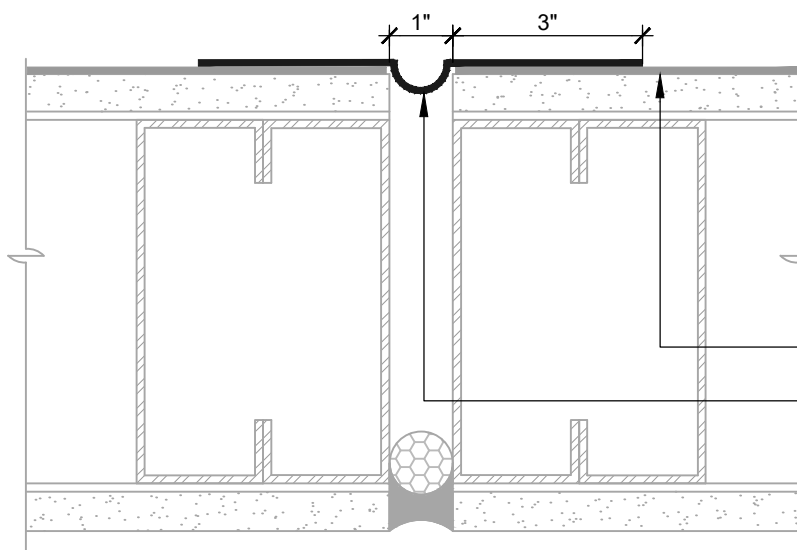
**AIR-BLOC ALL WEATHER STPE**  
LAP AIR BARRIER 1" ONTO FLASHING

**BLUESKIN SA**  
(SEE NOTE #4 AND CONCAVE LOOP FLASHING DETAIL)

CREATE CONCAVE LOOP IN MEMBRANE BY LOOPING INTO GAP. PRIOR TO INSTALLATION, ADHERE MEMBRANE TO ITSELF AND INSTALL TO PREVENT ADHESION TO SURFACES WITHIN GAP.



**CONCAVE LOOP FLASHING**  
"SIAMESE" FLASHING



**GAPS UP TO 1" MAX (PLAN VIEW)**  
FLASHING INSTALLED AFTER WRB

**AIR-BLOC ALL WEATHER STPE**

**BLUESKIN SA**  
SEE NOTE #4 AND REFER TO DETAIL ABSTPE-7A1 FOR **AIR-BLOC ALL WEATHER STPE** REVERSE LAP INSTALLATION INSTRUCTIONS (SEE CONCAVE LOOP FLASHING DETAIL)

**NOTES:**

1. DETAIL SHOWS **AIR-BLOC ALL WEATHER STPE FLUID APPLIED VAPOR PERMEABLE AIR BARRIER**. SUBSTRATE SHOWN IS FOR REFERENCE ONLY. ACCEPTABLE SUBSTRATES INCLUDE PLYWOOD, OSB, CONCRETE, CMU, METAL, AND EXTERIOR GRADE SHEATHING.
2. ADHESION OF COMPONENTS DEPICTED IN THIS DETAIL PROGRESSIVELY INCREASE AFTER INITIAL APPLICATION. ALLOW A MINIMUM OF 7 DAYS AFTER INSTALLATION TO CONDUCT ADHESION TESTS IF REQUIRED.
3. OTHER FLASHING OPTIONS INCLUDE: **BLUESKIN SA LT, BLUESKIN METAL CLAD OR BLUESKIN BUTYL FLASH.**
4. HENRY SELF-ADHERED MEMBRANES (INCLUDING **BLUESKIN SA, BLUESKIN SA LT, BLUESKIN TWF, BLUESKIN METAL CLAD OR BLUESKIN BUTYL FLASH**) MUST BE INSTALLED WITH **AQUATAC PRIMER** WHEN APPLIED ONTO CURED **AIR-BLOC ALL WEATHER STPE**.
5. INSULATION, CLADDING AND OPTIONAL VAPOR BARRIER NOT SHOWN FOR CLARITY. REFER TO LOCAL CODE ORDINANCES FOR INSULATION AND VAPOR BARRIER REQUIREMENTS.
6. REFER TO PRODUCT SPECIFIC TECHNICAL DATA SHEET (TDS), **AIR-BLOC ALL WEATHER STPE** GUIDE SPECIFICATION AND **AIR-BLOC ALL WEATHER STPE** INSTALLATION MANUAL FOR INSTALLATION PROCEDURES.

MANUFACTURER GUIDE DETAILS ARE FOR REFERENCE ONLY. HENRY DOES NOT ASSUME RESPONSIBILITY FOR ERRORS OR DEVIATIONS IN DESIGN OR ENGINEERING. PROJECT SPECIFIC VERIFICATION IS RECOMMENDED PRIOR TO INSTALLATION.

**AIR-BLOC ALL WEATHER STPE**

**NON-MOVING JOINTS**

**SUBSTRATE GAPS UP TO 1" WIDE MAXIMUM**  
**SELF-ADHERED FLASHING**

SCALE: N.T.S.

01-10-2020

**ABSTPE-8B1**

**Henry**<sup>®</sup>

999 N. Pacific Coast Highway, Suite 800  
El Segundo, CA 90245  
800-486-1278 • www.henry.com