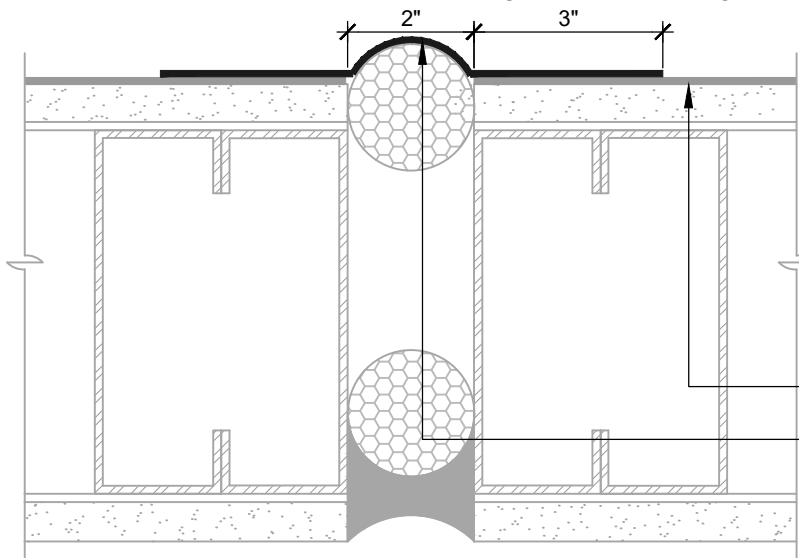


GAPS UP TO 2" MAX (PLAN VIEW)
FLASHING INSTALLED BEFORE WRB

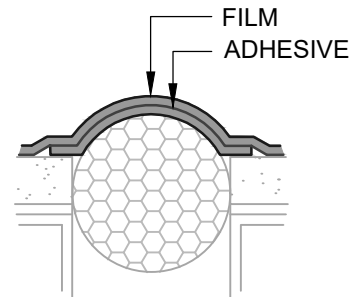


GAPS UP TO 2" MAX (PLAN VIEW)
FLASHING INSTALLED AFTER WRB

AIR-BLOC ALL WEATHER STPE
LAP AIR BARRIER 1" ONTO FLASHING

BLUESKIN SA
(SEE NOTE #4 AND CONVEX LOOP FLASHING DETAIL)

CREATE CONVEX LOOP IN MEMBRANE OVER BACKER ROD. PRIOR TO INSTALLATION, ADHERE MEMBRANE TO ITSELF AND INSTALL TO PREVENT ADHESION TO BACKER ROD.



CONVEX LOOP FLASHING
"SIAMESE" FLASHING

AIR-BLOC ALL WEATHER STPE

BLUESKIN SA
SEE NOTE #4 AND REFER TO DETAIL ABSTPE-7A1 FOR **AIR-BLOC ALL WEATHER STPE** REVERSE LAP INSTALLATION INSTRUCTIONS (SEE CONVEX LOOP FLASHING DETAIL)

NOTES:

1. DETAIL SHOWS **AIR-BLOC ALL WEATHER STPE FLUID APPLIED VAPOR PERMEABLE AIR BARRIER**. SUBSTRATE SHOWN IS FOR REFERENCE ONLY. ACCEPTABLE SUBSTRATES INCLUDE PLYWOOD, OSB, CONCRETE, CMU, METAL, AND EXTERIOR GRADE SHEATHING.
2. ADHESION OF COMPONENTS DEPICTED IN THIS DETAIL PROGRESSIVELY INCREASE AFTER INITIAL APPLICATION. ALLOW A MINIMUM OF 7 DAYS AFTER INSTALLATION TO CONDUCT ADHESION TESTS IF REQUIRED.
3. OTHER FLASHING OPTIONS INCLUDE: **BLUESKIN SA LT**, **BLUESKIN METAL CLAD** OR **BLUESKIN BUTYL FLASH**.
4. HENRY SELF-ADHERED MEMBRANES (INCLUDING **BLUESKIN SA**, **BLUESKIN SA LT**, **BLUESKIN TWF**, **BLUESKIN METAL CLAD** OR **BLUESKIN BUTYL FLASH**) MUST BE INSTALLED WITH **AQUATAC PRIMER** WHEN APPLIED ONTO CURED **AIR-BLOC ALL WEATHER STPE**.
5. INSULATION, CLADDING AND OPTIONAL VAPOR BARRIER NOT SHOWN FOR CLARITY. REFER TO LOCAL CODE ORDINANCES FOR INSULATION AND VAPOR BARRIER REQUIREMENTS.
6. REFER TO PRODUCT SPECIFIC TECHNICAL DATA SHEET (TDS), **AIR-BLOC ALL WEATHER STPE** GUIDE SPECIFICATION AND **AIR-BLOC ALL WEATHER STPE** INSTALLATION MANUAL FOR INSTALLATION PROCEDURES.

MANUFACTURER GUIDE DETAILS ARE FOR REFERENCE ONLY. HENRY DOES NOT ASSUME RESPONSIBILITY FOR ERRORS OR DEVIATIONS IN DESIGN OR ENGINEERING. PROJECT SPECIFIC VERIFICATION IS RECOMMENDED PRIOR TO INSTALLATION.

AIR-BLOC ALL WEATHER STPE

NON-MOVING JOINTS

SUBSTRATE GAPS UP TO 2" WIDE MAXIMUM
SELF-ADHERED FLASHING

SCALE: N.T.S.

01-10-2020

ABSTPE-8C1

Henry[®]

999 N. Pacific Coast Highway, Suite 800
El Segundo, CA 90245
800-486-1278 • www.henry.com