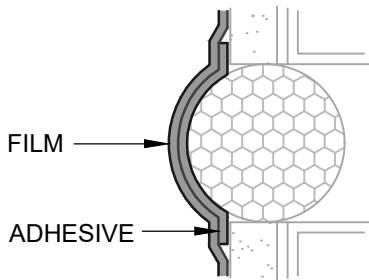


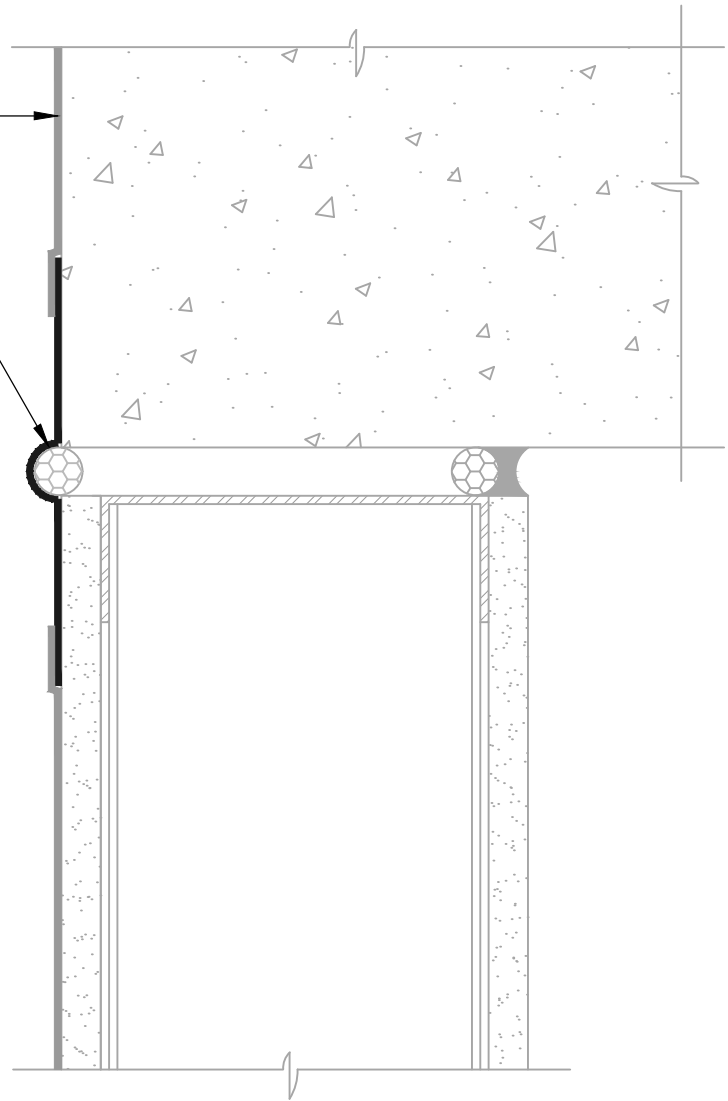
**AIR-BLOC ALL WEATHER STPE**  
LAP AIR BARRIER 1" ONTO FLASHING

**BLUESKIN SA**  
SEE NOTE #4 AND REFER TO DETAIL  
ABSTPE-7A1 FOR **AIR-BLOC ALL  
WEATHER STPE** REVERSE LAP  
INSTALLATION INSTRUCTIONS  
(SEE CONVEX LOOP FLASHING DETAIL)

CREATE CONVEX LOOP IN  
MEMBRANE OVER BACKER ROD.  
PRIOR TO INSTALLATION, ADHERE  
MEMBRANE TO ITSELF AND  
INSTALL TO PREVENT ADHESION  
TO BACKER ROD.



**CONVEX LOOP FLASHING**  
"SIAMESE" FLASHING



**NOTES:**

1. DETAIL SHOWS **AIR-BLOC ALL WEATHER STPE FLUID APPLIED VAPOR PERMEABLE AIR BARRIER**. SUBSTRATE SHOWN IS FOR REFERENCE ONLY. ACCEPTABLE SUBSTRATES INCLUDE PLYWOOD, OSB, CONCRETE, CMU, METAL, AND EXTERIOR GRADE SHEATHING.
2. ADHESION OF COMPONENTS DEPICTED IN THIS DETAIL PROGRESSIVELY INCREASE AFTER INITIAL APPLICATION. ALLOW A MINIMUM OF 7 DAYS AFTER INSTALLATION TO CONDUCT ADHESION TESTS IF REQUIRED.
3. OTHER FLASHING OPTIONS INCLUDE: **BLUESKIN SA LT, BLUESKIN METAL CLAD OR BLUESKIN BUTYL FLASH**.
4. HENRY SELF-ADHERED MEMBRANES (INCLUDING **BLUESKIN SA, BLUESKIN SA LT, BLUESKIN TWF, BLUESKIN METAL CLAD OR BLUESKIN BUTYL FLASH**) MUST BE INSTALLED WITH **AQUATAC PRIMER** WHEN APPLIED ONTO CURED **AIR-BLOC ALL WEATHER STPE**.
5. INSULATION, CLADDING AND OPTIONAL VAPOR BARRIER NOT SHOWN FOR CLARITY. REFER TO LOCAL CODE ORDINANCES FOR INSULATION AND VAPOR BARRIER REQUIREMENTS.
6. REFER TO PRODUCT SPECIFIC TECHNICAL DATA SHEET (TDS), **AIR-BLOC ALL WEATHER STPE** GUIDE SPECIFICATION AND **AIR-BLOC ALL WEATHER STPE** INSTALLATION MANUAL FOR INSTALLATION PROCEDURES.

**Henry**<sup>®</sup>

999 N. Pacific Coast Highway, Suite 800  
El Segundo, CA 90245  
800-486-1278 • www.henry.com

MANUFACTURER GUIDE DETAILS ARE FOR REFERENCE ONLY. HENRY DOES NOT ASSUME RESPONSIBILITY FOR ERRORS OR DEVIATIONS IN DESIGN OR ENGINEERING. PROJECT SPECIFIC VERIFICATION IS RECOMMENDED PRIOR TO INSTALLATION.

**AIR-BLOC ALL WEATHER STPE**

**DEFLECTION JOINT**

**HORIZONTAL DEFLECTION JOINT  
SELF-ADHERED FLASHING**

SCALE: N.T.S.

01-10-2020

**ABSTPE-8DA**