

**COLD JOINT AT UPTURN**

N.T.S

**AIR-BLOC ALL WEATHER STPE**

**BLUESKIN SA**

SET FLASHING ONTO A BED OF WET **HENRY 925 BES SEALANT** (60 MILS) AT PROTECTION COURSE OVERLAP

**MODIFIEDPLUS G100S/S OR PROTECTION FABRIC - GR08**

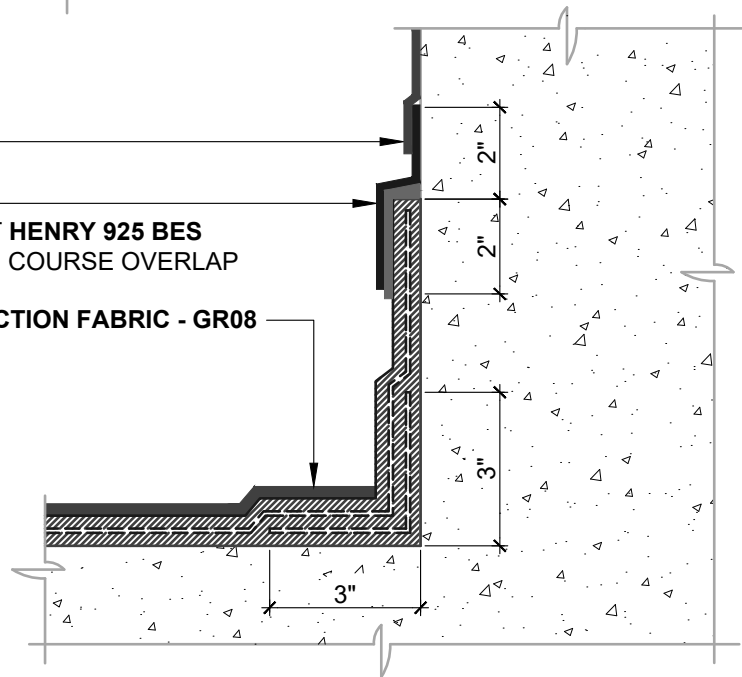
**HENRY CM100** (60 MILS)

**POLYESTER FABRIC**

**HENRY CM100** (60 MILS)

**POLYESTER FABRIC**

**HENRY CM100** (60 MILS)



**CONTINUOUS CURB AT UPTURN**

N.T.S

**NOTES:**

1. DETAIL SHOWS **AIR-BLOC ALL WEATHER STPE FLUID APPLIED VAPOR PERMEABLE AIR BARRIER** AND **HENRY CM100 COLD FLUID-APPLIED WATERPROOFING** TRANSITION. SUBSTRATE SHOWN IS FOR REFERENCE ONLY. REFER TO PRODUCT SPECIFIC TECHNICAL DATA SHEET (TDS) FOR PRODUCT SPECIFIC ACCEPTABLE SUBSTRATES.
2. REFER TO PRODUCT SPECIFIC TECHNICAL DATA SHEET (TDS), GUIDE SPECIFICATION AND INSTALLATION MANUAL FOR INSTALLATION PROCEDURES.

**Henry**<sup>®</sup>

999 N. Pacific Coast Highway, Suite 800  
El Segundo, CA 90245  
800-486-1278 • www.henry.com

MANUFACTURER GUIDE DETAILS ARE FOR REFERENCE ONLY. HENRY DOES NOT ASSUME RESPONSIBILITY FOR ERRORS OR DEVIATIONS IN DESIGN OR ENGINEERING. PROJECT SPECIFIC VERIFICATION IS RECOMMENDED PRIOR TO INSTALLATION.

**AIR-BLOC ALL WEATHER STPE TIE-IN TO HENRY CM100**

**TIE-IN DETAIL**

**REINFORCED CORNER**  
**HENRY 990-25 OR POLYESTER FABRIC**

SCALE: N.T.S.

05-22-2019

**ABSTPE-TID2A**