

AIR BARRIER INSTALLED AFTER ROOFING

N.T.S

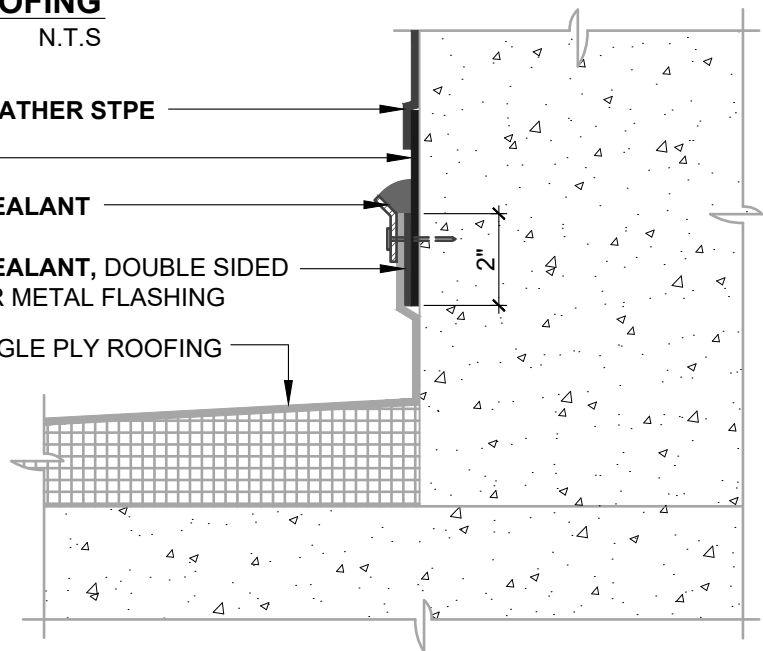
AIR-BLOC ALL WEATHER STPE

BLUESKIN SA

HENRY 925 BES SEALANT

HENRY 925 BES SEALANT, DOUBLE SIDED ROOFING TAPE OR METAL FLASHING

TPO OR EPDM SINGLE PLY ROOFING



AIR BARRIER INSTALLED BEFORE ROOFING

N.T.S

NOTES:

1. DETAIL SHOWS **AIR-BLOC ALL WEATHER STPE FLUID APPLIED VAPOR PERMEABLE AIR BARRIER** AND SINGLE PLY (TPO OR EPDM) ROOFING TRANSITION. SUBSTRATE SHOWN IS FOR REFERENCE ONLY. REFER TO PRODUCT SPECIFIC TECHNICAL DATA SHEET (TDS) FOR PRODUCT SPECIFIC ACCEPTABLE SUBSTRATES.
2. OTHER FLASHING OPTIONS INCLUDE: **BLUESKIN BUTYL FLASH, BLUESKIN SA LT OR METAL CLAD**
3. REFER TO ROOFING MANUFACTURER FOR INSTALLATION REQUIREMENTS.
4. REFER TO PRODUCT SPECIFIC TECHNICAL DATA SHEET (TDS), GUIDE SPECIFICATION AND INSTALLATION MANUAL FOR INSTALLATION PROCEDURES.

Henry[®]

999 N. Pacific Coast Highway, Suite 800
El Segundo, CA 90245
800-486-1278 • www.henry.com

MANUFACTURER GUIDE DETAILS ARE FOR REFERENCE ONLY. HENRY DOES NOT ASSUME RESPONSIBILITY FOR ERRORS OR DEVIATIONS IN DESIGN OR ENGINEERING. PROJECT SPECIFIC VERIFICATION IS RECOMMENDED PRIOR TO INSTALLATION.

AIR-BLOC ALL WEATHER STPE TIE-IN TO SINGLE PLY ROOFING

TIE-IN DETAIL

**AIR BARRIER AND SINGLE PLY ROOFING TRANSITION
TPO OR EPDM**

SCALE: N.T.S.

05-22-2019

ABSTPE-TID4A