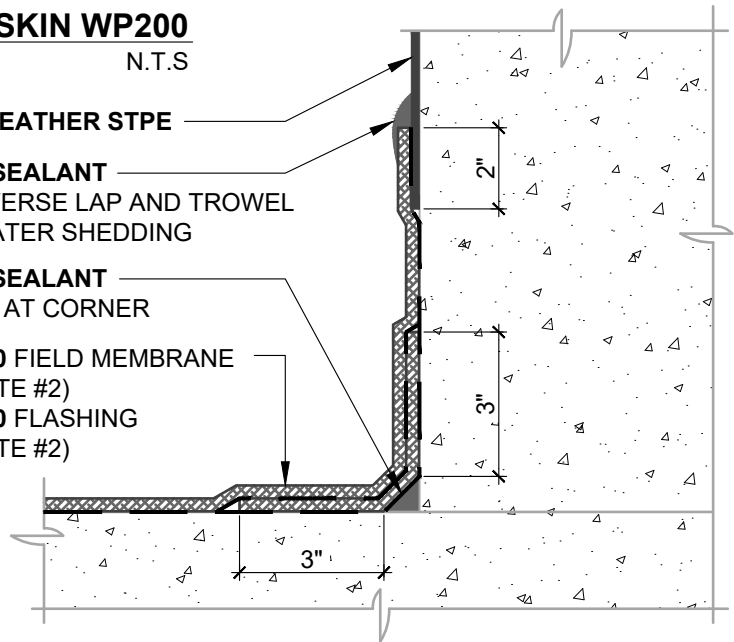


AIR BARRIER INSTALLED AFTER BLUESKIN WP200

N.T.S

- AIR-BLOC ALL WEATHER STPE**
- HENRY 925 BES SEALANT**
FULLY COAT REVERSE LAP AND TROWEL TO PROMOTE WATER SHEDDING
- HENRY 925 BES SEALANT**
3/4" FILLET BEAD AT CORNER
- BLUESKIN WP200 FIELD MEMBRANE PRIMER (SEE NOTE #2)**
BLUESKIN WP200 FLASHING PRIMER (SEE NOTE #2)



AIR BARRIER INSTALLED BEFORE BLUESKIN WP200

N.T.S

NOTES:

1. DETAIL SHOWS **AIR-BLOC ALL WEATHER STPE FLUID APPLIED VAPOR PERMEABLE AIR BARRIER** AND **BLUESKIN WP200** TRANSITION. SUBSTRATE SHOWN IS FOR REFERENCE ONLY. REFER TO PRODUCT SPECIFIC TECHNICAL DATA SHEET (TDS) FOR PRODUCT SPECIFIC ACCEPTABLE SUBSTRATES.
2. RECOMMENDED ADHESIVE/PRIMER FOR **BLUESKIN WP200**: **AQUATAC PRIMER**. REFER TO PRODUCT SPECIFIC TECHNICAL DATA SHEET TO CONFIRM VOC COMPLIANCE.
3. REFER TO PRODUCT SPECIFIC TECHNICAL DATA SHEET (TDS), GUIDE SPECIFICATION AND INSTALLATION MANUAL FOR INSTALLATION PROCEDURES.

Henry[®]

999 N. Pacific Coast Highway, Suite 800
El Segundo, CA 90245
800-486-1278 • www.henry.com

MANUFACTURER GUIDE DETAILS ARE FOR REFERENCE ONLY. HENRY DOES NOT ASSUME RESPONSIBILITY FOR ERRORS OR DEVIATIONS IN DESIGN OR ENGINEERING. PROJECT SPECIFIC VERIFICATION IS RECOMMENDED PRIOR TO INSTALLATION.

AIR-BLOC ALL WEATHER STPE TIE-IN TO BLUESKIN WP200

TIE-IN DETAIL

CONCEALED FLASHING
BLUESKIN WP200

SCALE: N.T.S.

05-22-2019

ABSTPE-TID5A