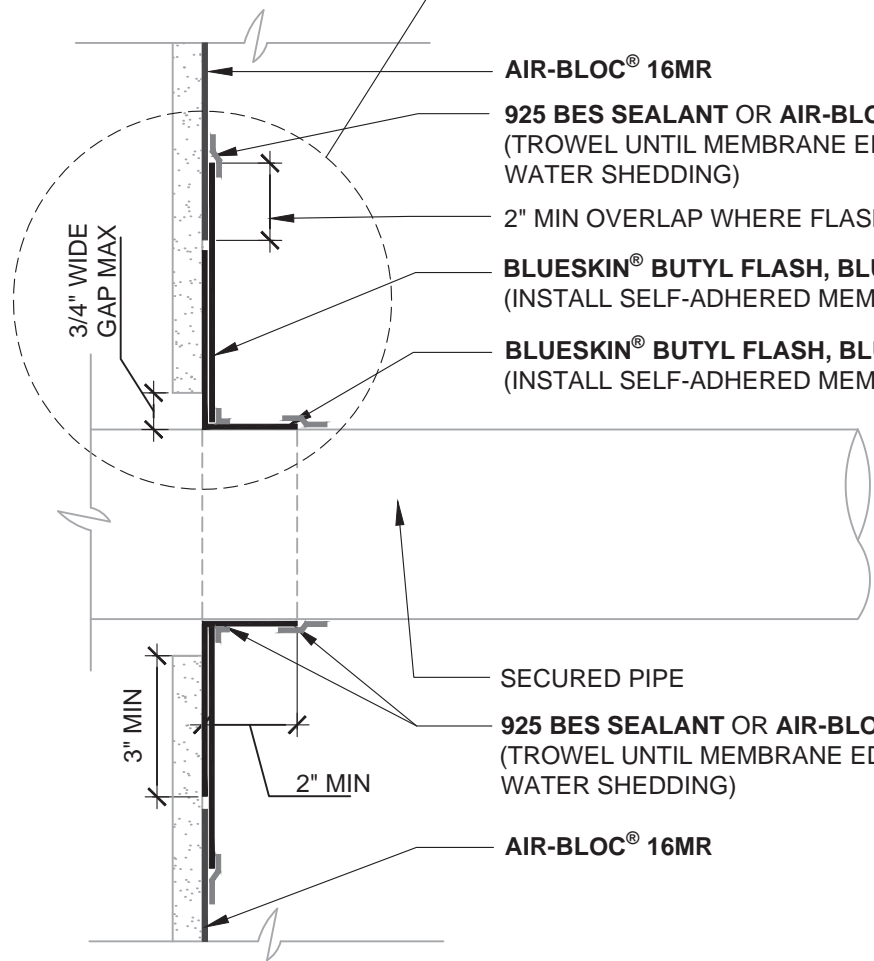


AIR-BLOC® 16MR
 1" OVERLAP WHERE **AIR-BLOC® 16MR** LAPS ONTO SELF-ADHERED MEMBRANE
BLUESKIN® BUTYL FLASH, BLUESKIN® SA, BLUESKIN® SALT, OR METAL CLAD® (INSTALL SELF-ADHERED MEMBRANES IN A TARGET PATTERN)
925 BES SEALANT OR AIR-BLOC® LF
BLUESKIN® BUTYL FLASH, BLUESKIN® SA, BLUESKIN® SALT, OR METAL CLAD® (INSTALL SELF-ADHERED MEMBRANES IN A FINGER PATTERN)

ALTERNATE LAP METHOD



AIR-BLOC® 16MR
925 BES SEALANT OR AIR-BLOC® LF
 (TROWEL UNTIL MEMBRANE EDGE IS FULLY COATED TO PROMOTE WATER SHEDDING)
 2" MIN OVERLAP WHERE FLASHING LAPS ONTO **AIR-BLOC® 16MR**
BLUESKIN® BUTYL FLASH, BLUESKIN® SA, BLUESKIN® SALT, OR METAL CLAD®
 (INSTALL SELF-ADHERED MEMBRANES IN A TARGET PATTERN)
BLUESKIN® BUTYL FLASH, BLUESKIN® SA, BLUESKIN® SALT, OR METAL CLAD®
 (INSTALL SELF-ADHERED MEMBRANES IN A FINGER PATTERN)
 SECURED PIPE
925 BES SEALANT OR AIR-BLOC® LF
 (TROWEL UNTIL MEMBRANE EDGE IS FULLY COATED TO PROMOTE WATER SHEDDING)
AIR-BLOC® 16MR

NOTES:

1. DETAIL SHOWS **AIR-BLOC® 16MR** ASSEMBLY INSTALLED OVER EXTERIOR GRADE GYPSUM SHEATHING. OTHER ACCEPTABLE SUBSTRATES INCLUDE PLYWOOD, OSB, CONCRETE, AND CONCRETE BLOCK.
2. INSULATION AND CLADDING NOT SHOWN FOR CLARITY.
3. WHERE REQUIRED PRIME SUBSTRATE PRIOR TO SELF-ADHERED FLASHING INSTALLATION. REFER TO PRODUCT SPECIFIC TECHNICAL DATA SHEET (TDS) FOR PRIMER PRODUCT AND APPLICATION RATE RECOMMENDATIONS.
4. REFER TO **AIR-BLOC® 16MR** GUIDE SPECIFICATION FOR RECOMMENDED INSTALLATION PROCEDURES.

MANUFACTURER GUIDE DETAILS ARE FOR REFERENCE ONLY. HENRY® DOES NOT ASSUME RESPONSIBILITY FOR ERRORS OR DEVIATIONS IN DESIGN OR ENGINEERING. PROJECT SPECIFIC VERIFICATION IS RECOMMENDED PRIOR TO INSTALLATION.

AIR-BLOC® 16MR AIR AND VAPOR BARRIER

PIPE PENETRATION
 SUBSTRATE GAPS UP TO 3/4" WIDE GAP MAXIMUM
 SELF-ADHERED FLASHING

SCALE: N.T.S. 10-25-2016

AB16MR - 2B



999 N. Sepulveda Blvd., Suite 800
 El Segundo, CA 90245
 800-486-1278 • www.henry.com