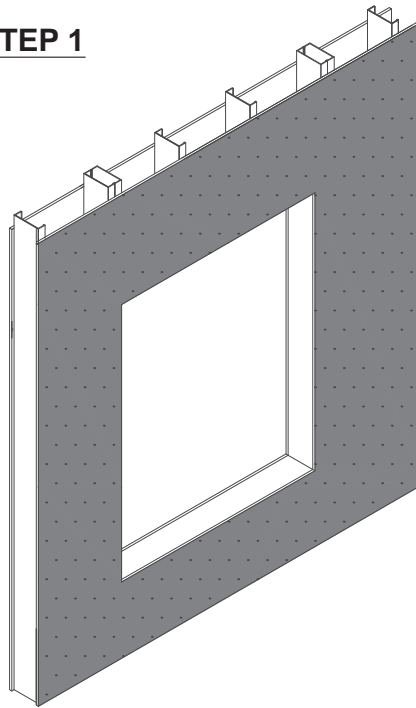
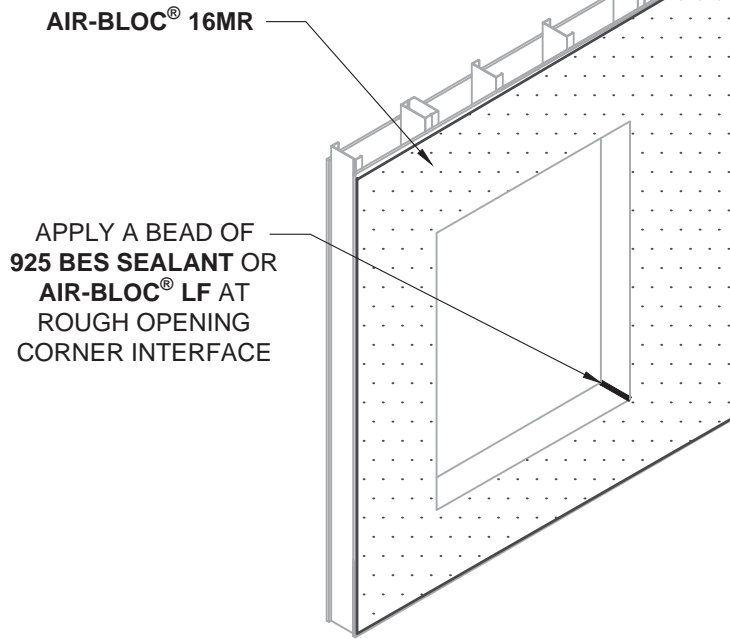


**AIR-BLOC® 16MR REBATE WINDOW DETAIL GUIDELINES CONSIST OF TWO PARTS. REFER TO DETAIL AB16MR - 6B2B FOR CONTINUED STEPS 4-6.**

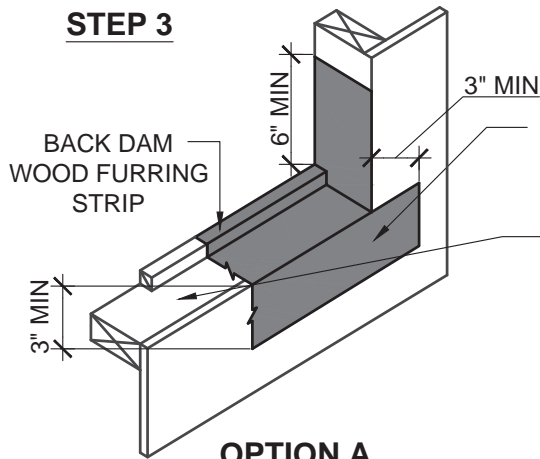
**STEP 1**



**STEP 2**



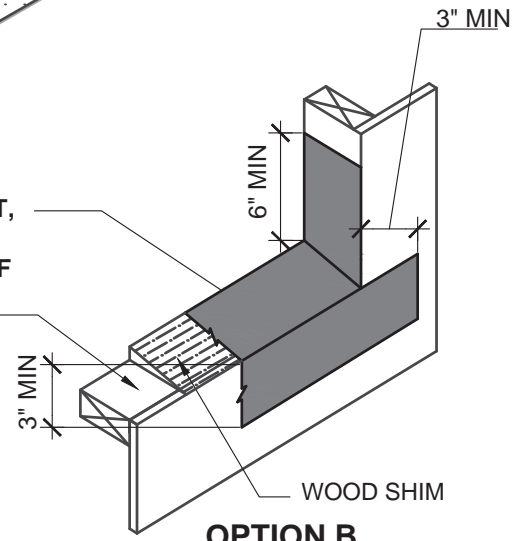
**STEP 3**



**OPTION A**

**BLUESKIN® SA, BLUESKIN® SALT, BLUESKIN® BUTYL FLASH, METAL CLAD®, OR AIR-BLOC® LF**

ROUGH OPENING SILL



**OPTION B**

**NOTES:**

1. DETAIL SHOWS AIR-BLOC® 16MR ASSEMBLY INSTALLED OVER EXTERIOR GRADE GYPSUM SHEATHING. OTHER ACCEPTABLE SUBSTRATES INCLUDE PLYWOOD, OSB, CONCRETE, AND CONCRETE BLOCK.
2. WINDOW INSTALLATION REQUIREMENTS TO BE VERIFIED BY DESIGN PROFESSIONAL.
3. INSULATION AND CLADDING NOT SHOWN FOR CLARITY.
4. WHERE REQUIRED PRIME SUBSTRATE PRIOR TO SELF-ADHERED FLASHING INSTALLATION. REFER TO PRODUCT SPECIFIC TECHNICAL DATA SHEET (TDS) FOR PRIMER PRODUCT AND APPLICATION RATE RECOMMENDATIONS.
5. REFER TO AIR-BLOC® 16MR GUIDE SPECIFICATION FOR RECOMMENDED INSTALLATION PROCEDURES.

**Henry®**

999 N. Sepulveda Blvd., Suite 800  
El Segundo, CA 90245  
800-486-1278 • www.henry.com

MANUFACTURER GUIDE DETAILS ARE FOR REFERENCE ONLY. HENRY® DOES NOT ASSUME RESPONSIBILITY FOR ERRORS OR DEVIATIONS IN DESIGN OR ENGINEERING. PROJECT SPECIFIC VERIFICATION IS RECOMMENDED PRIOR TO INSTALLATION.

**AIR-BLOC® 16MR AIR AND VAPOR BARRIER**

**REBATE WINDOW**

METHOD B - AIR-BLOC® 16MR INSTALLED  
AFTER FLASHING - PART 1 OF 2

SCALE: N.T.S.

10-25-2016

**AB16MR-6B2A**