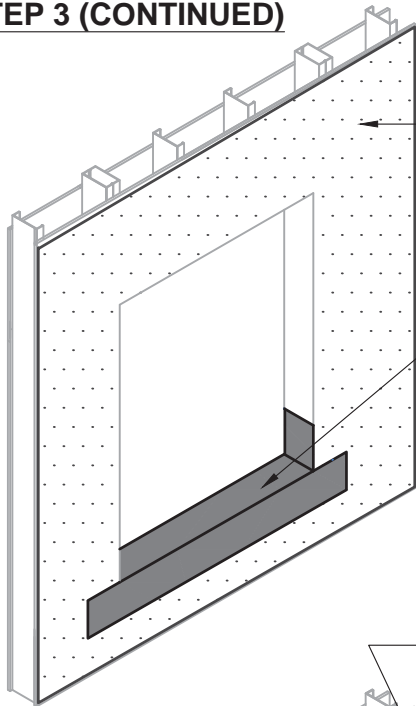
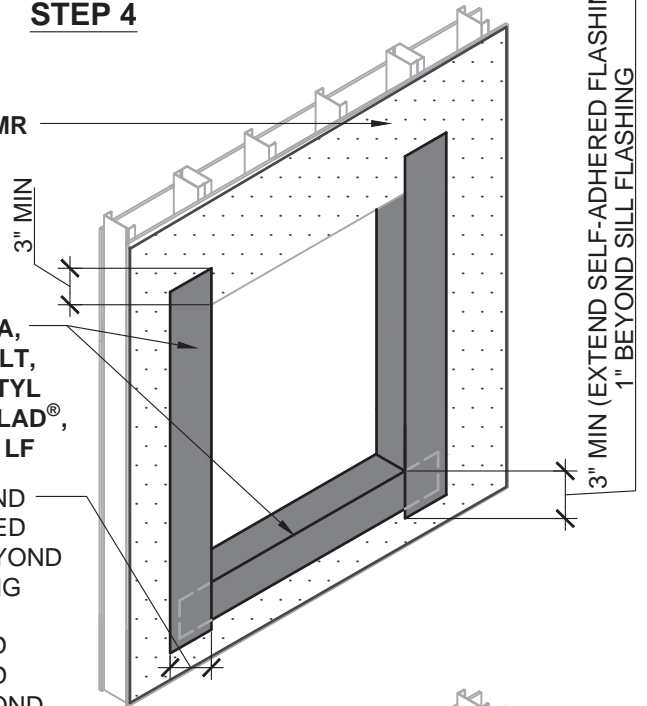


**AIR-BLOC® 16MR REBATE WINDOW DETAIL GUIDELINES CONSISTS OF TWO PARTS. REFER TO DETAIL AB16MR - 6B2A FOR PREVIOUS STEPS 1-3.**

**STEP 3 (CONTINUED)**



**STEP 4**



AIR-BLOC® 16MR

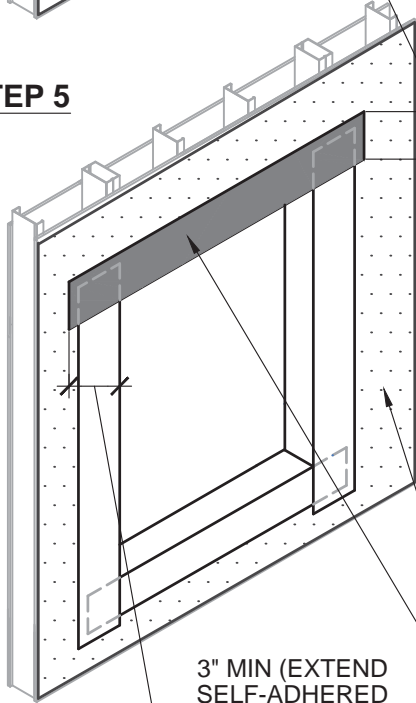
BLUESKIN® SA,  
BLUESKIN® SALT,  
BLUESKIN® BUTYL  
FLASH, METAL CLAD®,  
OR AIR-BLOC® LF

3" MIN (EXTEND  
SELF-ADHERED  
FLASHING 1" BEYOND  
SILL FLASHING

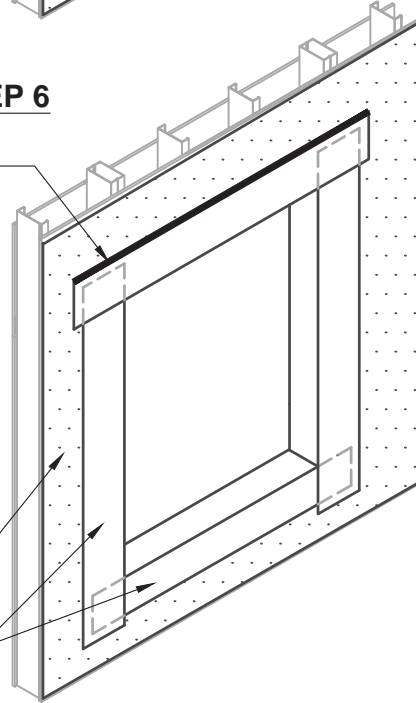
3" MIN (EXTEND  
SELF-ADHERED  
FLASHING 1" BEYOND  
JAMB FLASHING

3" MIN (EXTEND SELF-ADHERED FLASHING  
1" BEYOND SILL FLASHING

**STEP 5**



**STEP 6**



SEAL REVERSE LAP  
EDGES OF ROUGH  
OPENING FLASHINGS  
WITH 925 BES SEALANT  
OR AIR-BLOC® LF  
(TROWEL UNTIL  
MEMBRANE IS FIRMLY  
COATED TO PROMOTE  
WATER SHEDDING)

AIR-BLOC® 16MR

BLUESKIN® SA,  
BLUESKIN® SALT,  
BLUESKIN® BUTYL  
FLASH, METAL CLAD®,  
OR AIR-BLOC® LF

3" MIN (EXTEND  
SELF-ADHERED  
FLASHING 1"  
BEYOND JAMB  
FLASHING

**NOTES:**

- SEE NOTES ON DETAIL AB16MR - 6B2A.

MANUFACTURER GUIDE DETAILS ARE FOR REFERENCE ONLY. HENRY® DOES NOT ASSUME RESPONSIBILITY FOR ERRORS OR DEVIATIONS IN DESIGN OR ENGINEERING. PROJECT SPECIFIC VERIFICATION IS RECOMMENDED PRIOR TO INSTALLATION.

**AIR-BLOC® 16MR AIR AND VAPOR BARRIER**

**REBATE WINDOW**

METHOD B - AIR-BLOC® 16MR INSTALLED  
AFTER FLASHING - PART 2 OF 2

SCALE: N.T.S.

10-25-2016

**AB16MR-6B2B**

**Henry®**

999 N. Sepulveda Blvd., Suite 800  
El Segundo, CA 90245  
800-486-1278 • www.henry.com