

CLADDING AND INSULATION AS SPECIFIED.

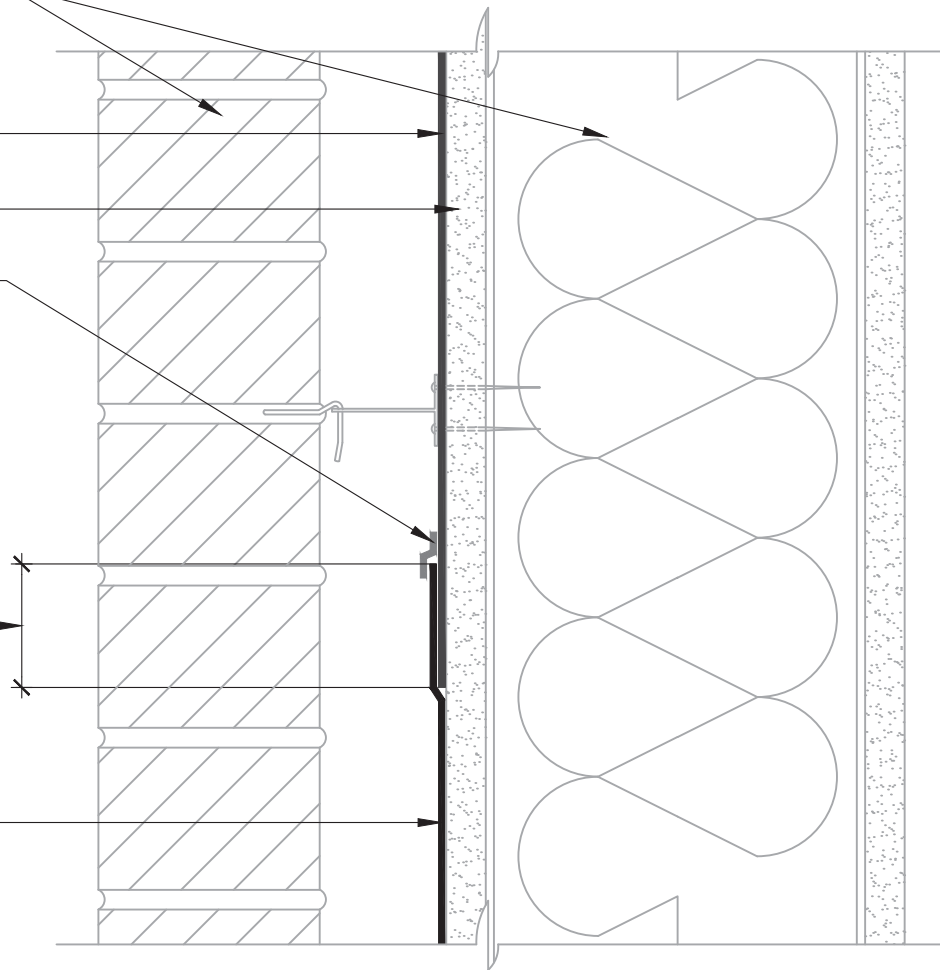
AIR-BLOC® 16MR

EXTERIOR SHEATHING

925 BES SEALANT OR AIR-BLOC® LF
(TROWEL UNTIL MEMBRANE EDGE IS FULLY COATED TO PROMOTE WATER SHEDDING)

2" OVERLAP WHERE FLASHING LAPS ONTO **AIR-BLOC® 16MR**

BLUESKIN® SA, BLUESKIN® SALT, METAL CLAD®, BLUESKIN® BUTYL FLASH, OR BLUESKIN® TWF



NOTES:

1. DETAIL SHOWS **AIR-BLOC® 16MR** ASSEMBLY INSTALLED OVER EXTERIOR GRADE GYPSUM SHEATHING. OTHER ACCEPTABLE SUBSTRATES INCLUDE PLYWOOD, OSB, CONCRETE, AND CONCRETE BLOCK.
2. THE **AIR-BLOC® 16MR** ASSEMBLY SHALL BE INSTALLED TO PROVIDE A CONTINUOUS BARRIER TO PREVENT AIR AND WATER INTRUSION.
3. WHERE REQUIRED PRIME SUBSTRATE PRIOR TO SELF-ADHERED FLASHING INSTALLATION. REFER TO PRODUCT SPECIFIC TECHNICAL DATA SHEET (TDS) FOR PRIMER PRODUCT AND APPLICATION RATE RECOMMENDATIONS.
4. REFER TO **AIR-BLOC® 16MR** GUIDE SPECIFICATION FOR RECOMMENDED INSTALLATION PROCEDURES.

Henry®

999 N. Sepulveda Blvd., Suite 800
El Segundo, CA 90245
800-486-1278 • www.henry.com

MANUFACTURER GUIDE DETAILS ARE FOR REFERENCE ONLY. HENRY® DOES NOT ASSUME RESPONSIBILITY FOR ERRORS OR DEVIATIONS IN DESIGN OR ENGINEERING. PROJECT SPECIFIC VERIFICATION IS RECOMMENDED PRIOR TO INSTALLATION.

AIR-BLOC® 16MR AIR AND VAPOR BARRIER

REVERSE LAP

SBS OR BUTYL SELF-ADHERED FLASHING
LAPPING ONTO **AIR-BLOC® 16MR**

SCALE: N.T.S.

10-10--2016

AB16MR - 7A2