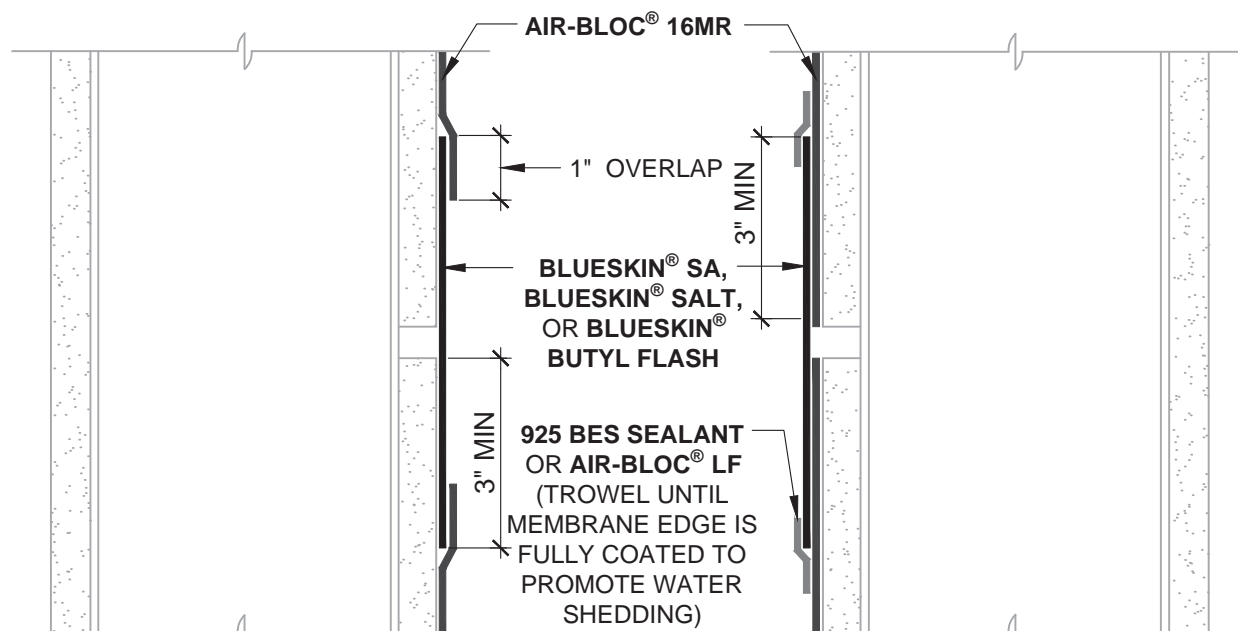


METHOD A
GAPS UP TO 1/4" WIDE

METHOD B
GAPS UP TO 1/2" WIDE



METHOD C
GAPS UP TO 1/2" WIDE

METHOD D
GAPS UP TO 1/2" WIDE

NOTES:

1. DETAIL SHOWS **AIR-BLOC® 16MR** ASSEMBLY INSTALLED OVER EXTERIOR GRADE GYPSUM SHEATHING. OTHER ACCEPTABLE SUBSTRATES INCLUDE PLYWOOD, OSB, CONCRETE, AND CONCRETE BLOCK.
2. INSULATION AND CLADDING NOT SHOWN FOR CLARITY.
3. SEAL END OF DAY AND PERMANENTLY EXPOSED REVERSE LAP EDGES WITH **925 BES SEALANT** OR **AIR-BLOC® LF**.
4. THE **AIR-BLOC® 16MR** ASSEMBLY SHALL BE INSTALLED TO PROVIDE A CONTINUOUS BARRIER TO PREVENT AIR AND WATER INTRUSION.
5. REFER TO **AIR-BLOC® 16MR** GUIDE SPECIFICATION FOR RECOMMENDED INSTALLATION PROCEDURES.

Henry®

999 N. Sepulveda Blvd., Suite 800
El Segundo, CA 90245
800-486-1278 • www.henry.com

MANUFACTURER GUIDE DETAILS ARE FOR REFERENCE ONLY. HENRY® DOES NOT ASSUME RESPONSIBILITY FOR ERRORS OR DEVIATIONS IN DESIGN OR ENGINEERING. PROJECT SPECIFIC VERIFICATION IS RECOMMENDED PRIOR TO INSTALLATION.

AIR-BLOC® 16MR AIR AND VAPOR BARRIER

CONSTRUCTION JOINTS

SUBSTRATE GAPS UP TO 1/4" WIDE MAXIMUM AND
SUBSTRATE GAPS UP TO 1/2" WIDE MAXIMUM

SCALE: N.T.S.

10-25-2016

AB16MR - 8A