

BLUESKIN® BUTYL FLASH, BLUESKIN® SA, BLUESKIN® SALT, OR METAL CLAD®

EXTEND FLASHING 3" MIN

AIR-BLOC® 16MR
OR HENRY® VAPOR PERMEABLE AIR BARRIER

CLADDING AND INSULATION AS SPECIFIED

BLUESKIN® BUTYL FLASH, BLUESKIN® SA, BLUESKIN® SALT, OR METAL CLAD®

LAP FLASHING 3" MIN ONTO EACH SIDE OF SUBSTRATE AT DISSIMILAR MATERIAL TRANSITIONS

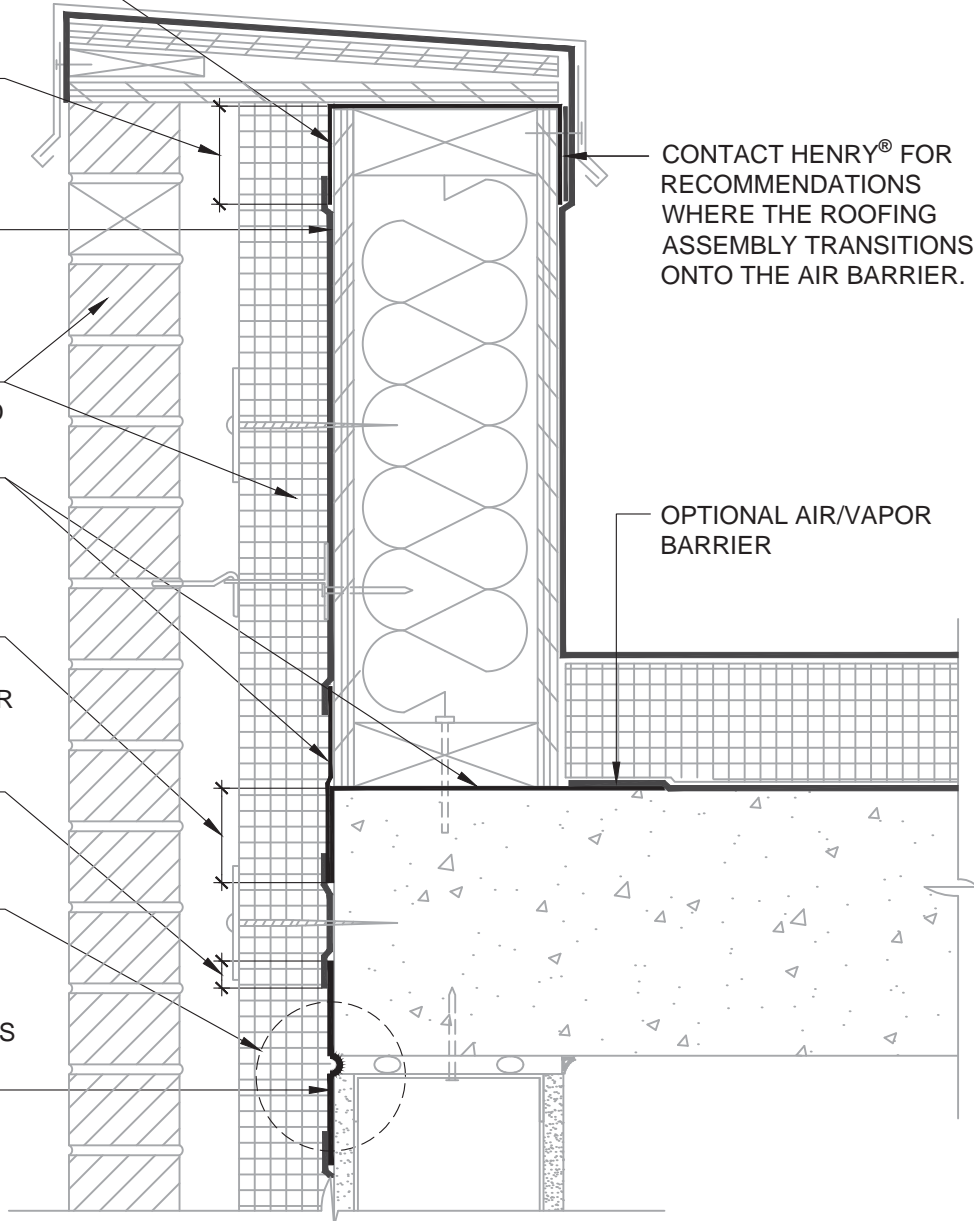
1" OVERLAP WHERE **AIR-BLOC® 16MR** LAPS ONTO FLASHING

REFER TO HENRY® DETAIL AB16MR - 8B OR AB16MR - 8C SUBSTRATE GAPS FOR DEFLECTION JOINT RECOMMENDATIONS

BLUESKIN® BUTYL FLASH, BLUESKIN® SA, BLUESKIN® SALT, OR METAL CLAD®

CONTACT HENRY® FOR RECOMMENDATIONS WHERE THE ROOFING ASSEMBLY TRANSITIONS ONTO THE AIR BARRIER.

OPTIONAL AIR/VAPOR BARRIER



NOTES:

1. DETAIL SHOWS **AIR-BLOC® 16MR** ASSEMBLY INSTALLED OVER EXTERIOR GRADE GYPSUM SHEATHING. OTHER ACCEPTABLE SUBSTRATES INCLUDE PLYWOOD, OSB, CONCRETE, AND CONCRETE BLOCK.
2. THE **AIR-BLOC® 16MR** ASSEMBLY SHALL BE INSTALLED TO PROVIDE A CONTINUOUS BARRIER TO PREVENT AIR AND WATER INTRUSION.
3. AVOID INSTALLATION OF A DOUBLE VAPOR BARRIER AT PARAPET WALL CONTACT HENRY® FOR DESIGN OPTIONS.
4. WHERE REQUIRED PRIME SUBSTRATE PRIOR TO SELF-ADHERED FLASHING INSTALLATION. REFER TO PRODUCT SPECIFIC TECHNICAL DATA SHEET (TDS) FOR PRIMER PRODUCT AND APPLICATION RATE RECOMMENDATIONS.
5. REFER TO **AIR-BLOC® 16MR** GUIDE SPECIFICATION FOR RECOMMENDED INSTALLATION PROCEDURES.

Henry®

999 N. Sepulveda Blvd., Suite 800
El Segundo, CA 90245
800-486-1278 • www.henry.com

MANUFACTURER GUIDE DETAILS ARE FOR REFERENCE ONLY. HENRY® DOES NOT ASSUME RESPONSIBILITY FOR ERRORS OR DEVIATIONS IN DESIGN OR ENGINEERING. PROJECT SPECIFIC VERIFICATION IS RECOMMENDED PRIOR TO INSTALLATION.

AIR-BLOC® 16MR AIR AND VAPOR BARRIER

PARAPET TRANSITION

ROOFING ASSEMBLY WRAPPING
OVER TOP OF PARAPET - CONTINUOUS INSULATION (CI)

SCALE: N.T.S.

10-25-2016

AB16MR - 9B1