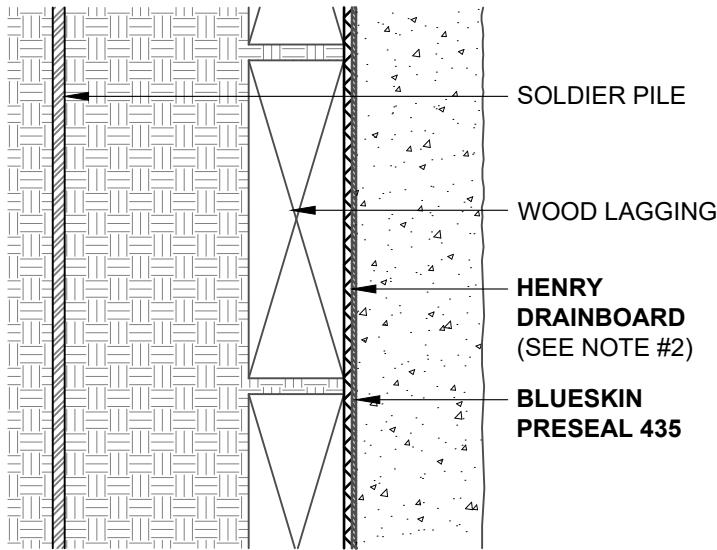
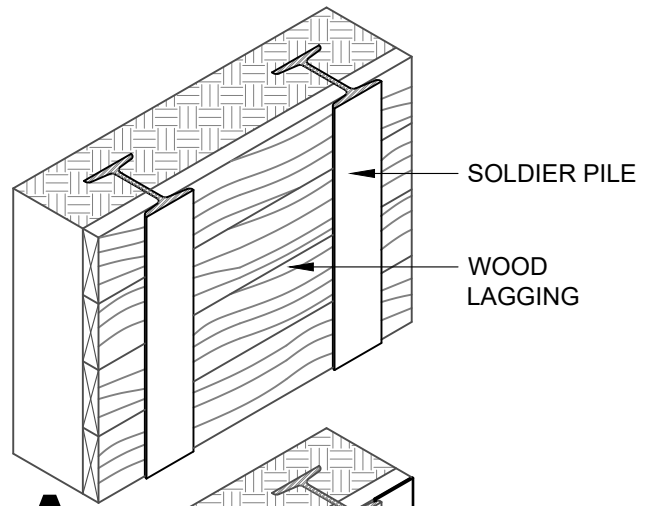


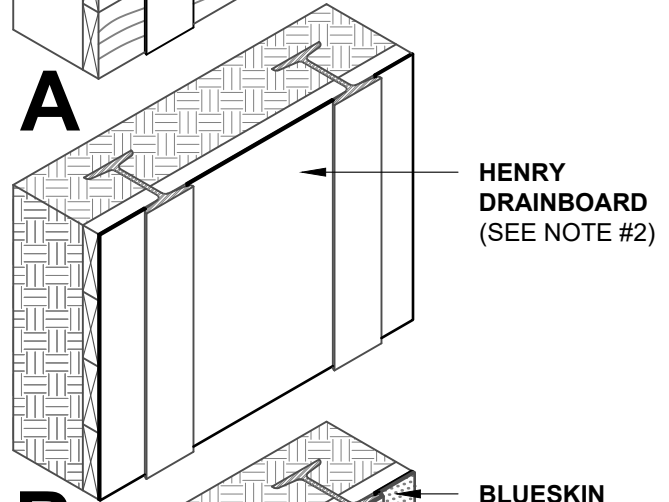
PLAN VIEW
CUT THROUGH WOOD LAGGING



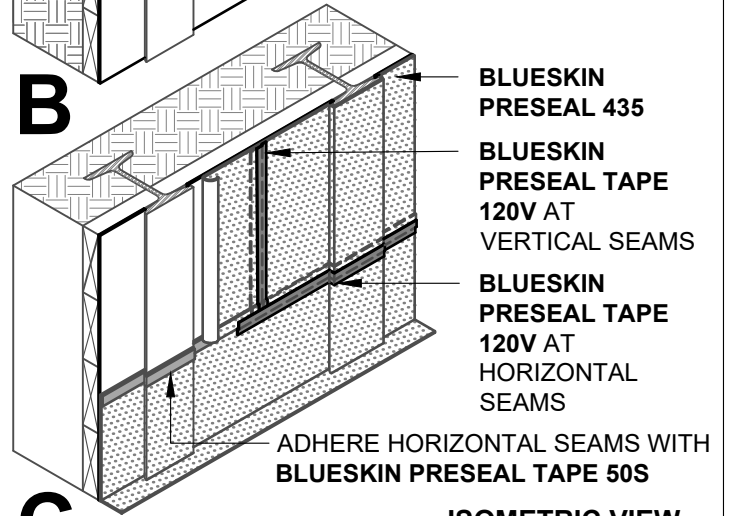
SECTION VIEW
CUT THROUGH WOOD LAGGING



A



B



C

ISOMETRIC VIEW
STEP-BY-STEP WOOD LAGGING

NOTES:

1. DETAIL SHOWS HENRY PRE-APPLIED WATERPROOFING SYSTEM FOR SHOTCRETE APPLICATIONS USING HENRY **BLUESKIN PRESEAL 435**. SUBSTRATE SHOWN IS FOR REFERENCE ONLY.
2. INSTALL SHOTCRETE IN ACCORDANCE WITH ACI 506.2-13, SPECIFICATION FOR SHOTCRETE INCLUDING, BUT NOT LIMITED TO, MINIMIZING LIFT HEIGHT (TRADITIONALLY 4'-0"), OVERSPRAY, AND EXCESSIVE REBOUND AT LIFT AREA.
3. TAPE VERTICAL AND HORIZONTAL **BLUESKIN PRESEAL 435** SEAMS WITH **BLUESKIN PRESEAL TAPE 120V**.
4. REFER TO PRODUCT SPECIFIC TECHNICAL DATA SHEET (TDS) AND GUIDE SPECIFICATION FOR INSTALLATION PROCEDURES.



MANUFACTURER GUIDE DETAILS ARE FOR REFERENCE ONLY. HENRY DOES NOT ASSUME RESPONSIBILITY FOR ERRORS OR DEVIATIONS IN DESIGN OR ENGINEERING. PROJECT SPECIFIC VERIFICATION IS RECOMMENDED PRIOR TO INSTALLATION.

HENRY PRE-APPLIED WATERPROOFING SYSTEM

WOOD LAGGING WALLS

**BLUESKIN PRESEAL 435 - SHOTCRETE APPLICATIONS
WOOD LAGGING**

SCALE: N.T.S.

09-14-2022

BSPS-0E4S