

**SYNKO-FLEX WATERSTOP OR  
HYDRO-FLEX WATERSTOP (SEE NOTE #3)**

**HENRY DRAINBOARD (SEE NOTE #4)**

**SOIL RETENTION SYSTEM  
(DO NOT INSTALL **BLUESKIN PRESEAL 320**  
DIRECTLY ONTO SHEET PILING - PREPARE  
SUBSTRATE WITH A SMOOTH SURFACE  
SUCH AS PLYWOOD OR DRAINBOARD)**

**BLUESKIN PRESEAL 320  
OR **BLUESKIN PRESEAL 435 (SEE NOTE #2)****

**REFER TO PRE-APPLIED WATERPROOFING  
OVERLAP DETAILS FOR SEAM TREATMENT  
OPTIONS AND OVERLAP REQUIREMENTS**

**SYNKO-FLEX WATERSTOP OR  
HYDRO-FLEX WATERSTOP CONNECTED  
IN ALL COLD POUR JOINTS (SEE NOTE #3)**

**SYNKO-FLEX WATERSTOP OR  
HYDRO-FLEX WATERSTOP (SEE NOTE #3)**

**SECURE FLUSH CLOSET FLANGE TO  
LAGGING AND COAT WITH **HENRY 925  
BES SEALANT****

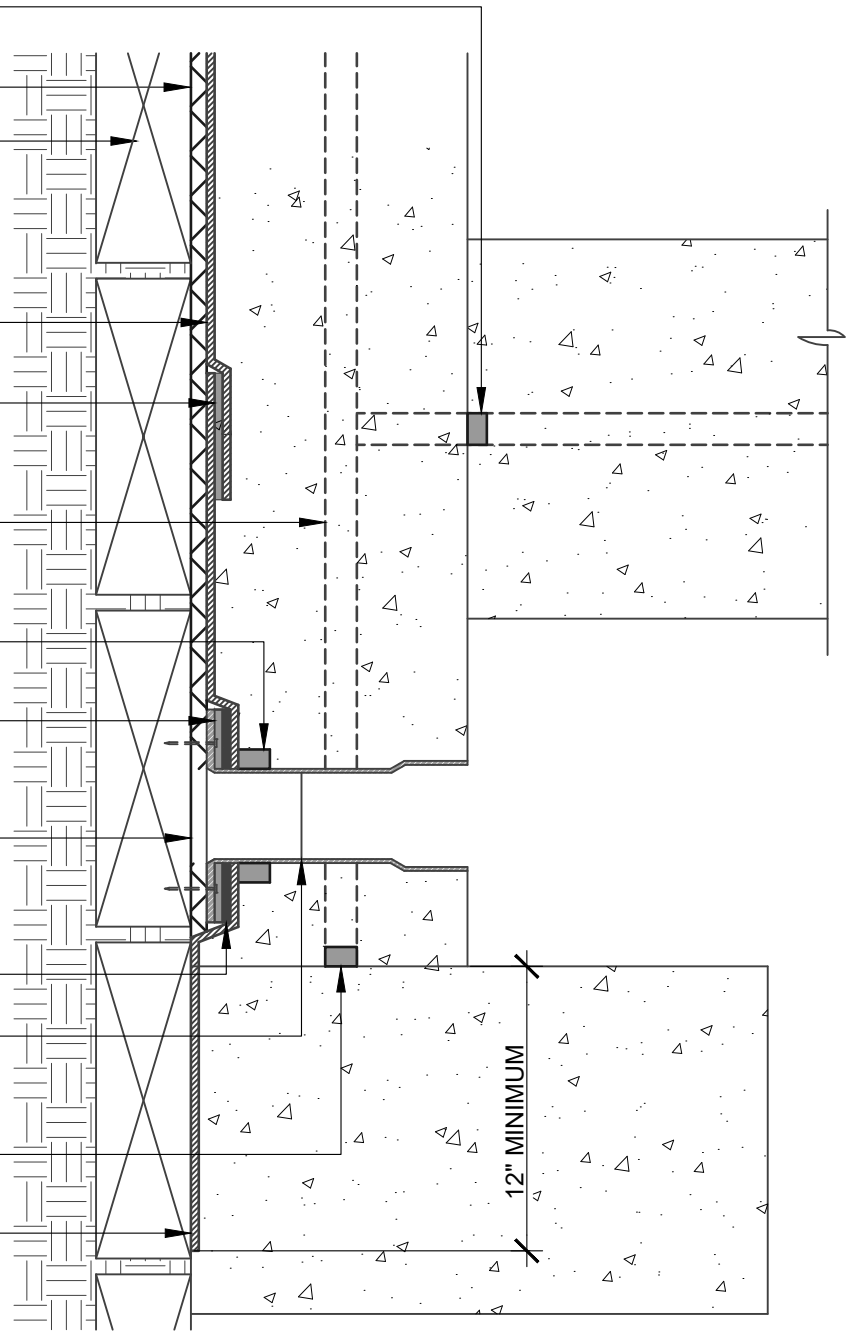
**CUT **HENRY DRAINBOARD** CORE  
EQUAL TO OR LESS THAN INTERIOR  
DIAMETER OF PIPE AS SPECIFIED  
(DO NOT CUT FILTER FABRIC)**

**BLUESKIN PRESEAL TAPE 50S**

**CONNECT PVC DRAINAGE PIPE TO  
DISCHARGE SYSTEM  
(SOLVENT JOINT WELD REQUIRED)**

**SYNKO-FLEX WATERSTOP OR  
HYDRO-FLEX WATERSTOP (SEE NOTE #3)**

**BLUESKIN PRESEAL 320  
OR **BLUESKIN PRESEAL 435 (SEE NOTE #2)****



**NOTES:**

1. DETAIL SHOWS HENRY PRE-APPLIED WATERPROOFING SYSTEM FOR APPLICATIONS USING HENRY **BLUESKIN PRESEAL 320** OR **BLUESKIN PRESEAL 435**. SUBSTRATE SHOWN IS FOR REFERENCE ONLY.
2. HENRY **BLUESKIN PRESEAL 435** CAN BE INSTALLED DIRECTLY ONTO SHEET PILING. **BLUESKIN PRESEAL 320** REQUIRES A SMOOTH SURFACE SUCH AS PLYWOOD OR DRAINBOARD.
3. APPLICATIONS USING **HYDRO-FLEX WATERSTOP**: 2" MINIMUM CONCRETE COVERAGE ON ALL SIDES.
4. HENRY RECOMMENDS THE USE OF A DRAINBOARD IN NON-HYDROSTATIC CONDITIONS, OR AS A SUBSTRATE PREPARATION. DO NOT USE DRAINBOARD UNLESS IT IS CONNECTED TO A PERMANENT DEWATERING SYSTEM.
5. REFER TO PRODUCT SPECIFIC TECHNICAL DATA SHEET (TDS) AND GUIDE SPECIFICATION FOR INSTALLATION PROCEDURES.

**Henry**<sup>®</sup>

999 N. Pacific Coast Highway, Suite 800  
El Segundo, CA 90245  
800-486-1278 • www.henry.com

MANUFACTURER GUIDE DETAILS ARE FOR REFERENCE ONLY. HENRY DOES NOT ASSUME RESPONSIBILITY FOR ERRORS OR DEVIATIONS IN DESIGN OR ENGINEERING. PROJECT SPECIFIC VERIFICATION IS RECOMMENDED PRIOR TO INSTALLATION.

**HENRY PRE-APPLIED WATERPROOFING SYSTEM**

**SLAB TO WALL TRANSITION**

**BLUESKIN PRESEAL 320 OR BLUESKIN PRESEAL 435  
INSTALLED OVER LAGGING WITH FLUSH CLOSET**

SCALE: N.T.S.

11-20-2020

**BSPS-1D**