

HENRY DRAINBOARD (SEE NOTE #4)

BLUESKIN PRESEAL 320  
OR BLUESKIN PRESEAL 435 (SEE NOTE #2)

COAT METAL TIE-BACK COVER  
WITH HENRY 925 BES SEALANT

BLUESKIN PRESEAL TAPE 50S

HENRY 925 BES SEALANT

BLUESKIN PRESEAL TAPE 50S

22 GAUGE MINIMUM SHEET METAL  
TIE-BACK COVER (BY OTHERS)

COAT METAL TIE-BACK COVER  
WITH HENRY 925 BES SEALANT

TIE-BACK HEAD

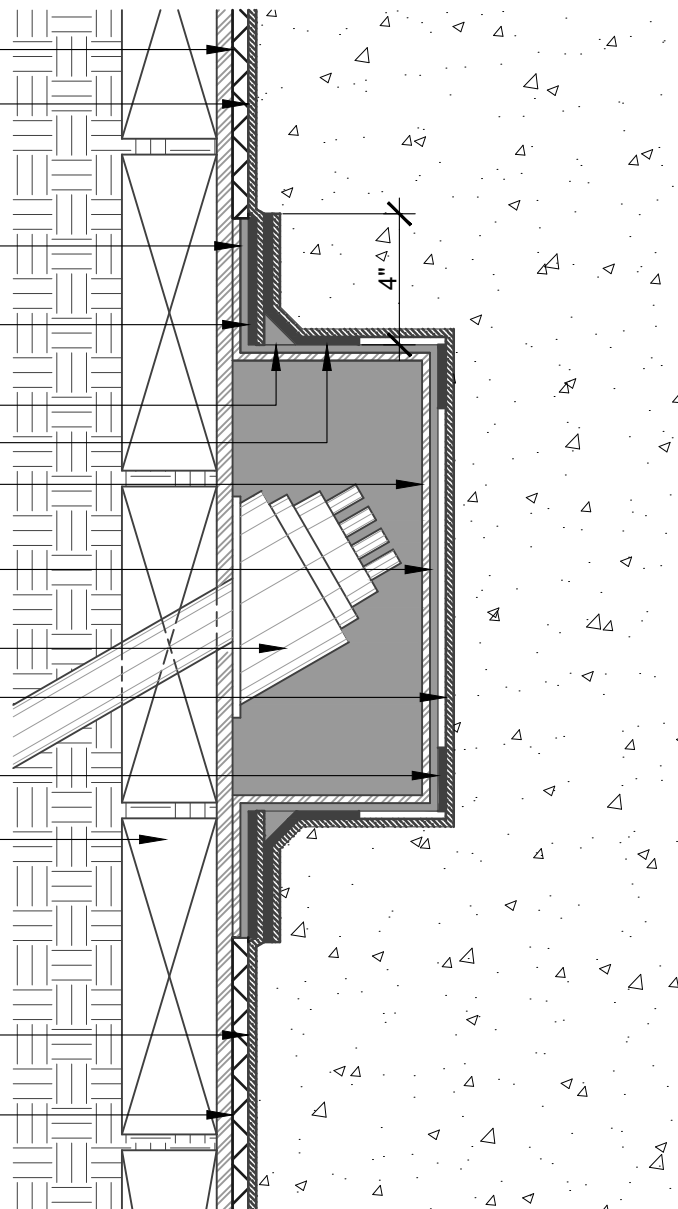
BLUESKIN PRESEAL 320  
OR BLUESKIN PRESEAL 435 (SEE NOTE #2)

BLUESKIN PRESEAL TAPE 50S

SOIL RETENTION SYSTEM  
(DO NOT INSTALL **BLUESKIN PRESEAL 320**  
DIRECTLY ONTO SHEET PILING - PREPARE  
SUBSTRATE WITH A SMOOTH SURFACE  
SUCH AS PLYWOOD OR DRAINBOARD)

BLUESKIN PRESEAL 320  
OR BLUESKIN PRESEAL 435 (SEE NOTE #2)

HENRY DRAINBOARD (SEE NOTE #4)



NOTES:

1. DETAIL SHOWS HENRY PRE-APPLIED WATERPROOFING SYSTEM FOR APPLICATIONS USING HENRY **BLUESKIN PRESEAL 320** OR **BLUESKIN PRESEAL 435**. SUBSTRATE SHOWN IS FOR REFERENCE ONLY.
2. HENRY **BLUESKIN PRESEAL 435** CAN BE INSTALLED DIRECTLY ONTO SHEET PILING. **BLUESKIN PRESEAL 320** REQUIRES A SMOOTH SURFACE SUCH AS PLYWOOD OR DRAINBOARD.
3. HENRY RECOMMENDS THE USE OF A DRAINBOARD IN NON-HYDROSTATIC CONDITIONS, OR AS A SUBSTRATE PREPARATION. DO NOT USE DRAINBOARD UNLESS IT IS CONNECTED TO A PERMANENT DEWATERING SYSTEM.
4. CREATE RELIEF CUTS AS REQUIRED TO INSTALL THE HENRY PRE-APPLIED WATERPROOFING SYSTEM AROUND TIE-BACK COVER. SEAL CUTS WITH **BLUESKIN PRESEAL TAPE 50S**.
5. REFER TO PRODUCT SPECIFIC TECHNICAL DATA SHEET (TDS) AND GUIDE SPECIFICATION FOR INSTALLATION PROCEDURES.

# Henry®

999 N. Pacific Coast Highway, Suite 800  
El Segundo, CA 90245  
800-486-1278 • www.henry.com

MANUFACTURER GUIDE DETAILS ARE FOR REFERENCE ONLY. HENRY DOES NOT ASSUME RESPONSIBILITY FOR ERRORS OR DEVIATIONS IN DESIGN OR ENGINEERING. PROJECT SPECIFIC VERIFICATION IS RECOMMENDED PRIOR TO INSTALLATION.

## HENRY PRE-APPLIED WATERPROOFING SYSTEM

### METAL TIE-BACK COVER

**BLUESKIN PRESEAL 320 OR BLUESKIN PRESEAL 435  
METAL TIE-BACK COVER**

SCALE: N.T.S.

11-20-2020

## BSPS-2A1