

**BLUESKIN PRESEAL 320**  
OR **BLUESKIN PRESEAL 435**  
(UNDER SLAB PRE-APPLIED WATERPROOFING)

**HENRY DRAINBOARD** (SEE NOTE #3)

**BLUESKIN PRESEAL 320**  
OR **BLUESKIN PRESEAL 435** (SEE NOTE #2)

SEAL PRE-APPLIED WATERPROOFING SEAMS  
WITH **BLUESKIN PRESEAL TAPE 120V**

**BLUESKIN PRESEAL TAPE 50S**

SOLDIER PILE

SOIL RETENTION SYSTEM  
(DO NOT INSTALL **BLUESKIN PRESEAL 320**  
DIRECTLY ONTO SHEET PILING - PREPARE  
SUBSTRATE WITH A SMOOTH SURFACE SUCH  
AS PLYWOOD OR DRAINBOARD)

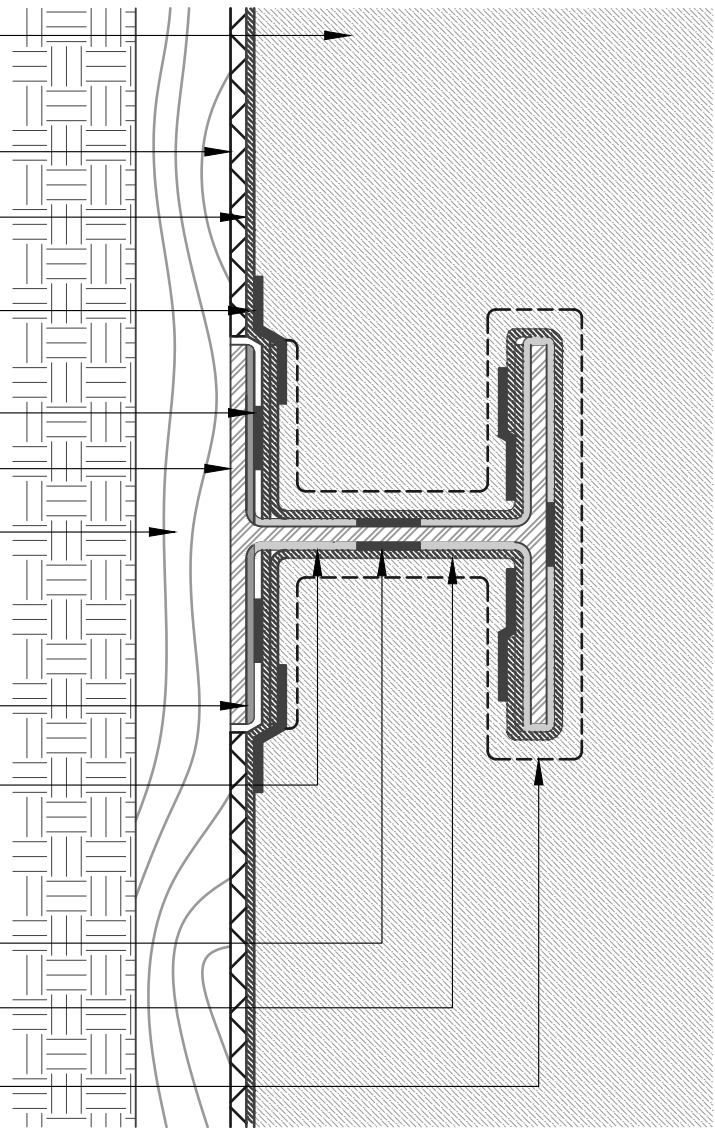
COAT SOLDIER PILE FLANGE  
WITH **HENRY 925 BES SEALANT**

SEAL BASE OF SOLDIER PILE WITH A CANT  
BEAD OF **HENRY 925 BES SEALANT** TO COVER  
METAL TO UNDER SLAB PRE-APPLIED  
WATERPROOFING CONNECTION

**BLUESKIN PRESEAL TAPE 50S**

**BLUESKIN PRESEAL 320**  
OR **BLUESKIN PRESEAL 435** (SEE NOTE #2)

**HYDRO-FLEX WATERSTOP**  
(2" MINIMUM CONCRETE  
COVERAGE ON ALL SIDES)



**PLAN VIEW - TIE-IN AT UNDER SLAB WATERPROOFING**  
SOLDIER PILE AT WOOD LAGGING

**NOTES:**

1. DETAIL SHOWS HENRY PRE-APPLIED WATERPROOFING SYSTEM FOR APPLICATIONS USING HENRY **BLUESKIN PRESEAL 320** OR **BLUESKIN PRESEAL 435**. SUBSTRATE SHOWN IS FOR REFERENCE ONLY.
2. HENRY **BLUESKIN PRESEAL 435** CAN BE INSTALLED DIRECTLY ONTO SHEET PILING. **BLUESKIN PRESEAL 320** REQUIRES A SMOOTH SURFACE SUCH AS PLYWOOD OR DRAINBOARD.
3. HENRY RECOMMENDS THE USE OF A DRAINBOARD IN NON-HYDROSTATIC CONDITIONS, OR AS A SUBSTRATE PREPARATION. DO NOT USE DRAINBOARD UNLESS IT IS CONNECTED TO A PERMANENT DEWATERING SYSTEM.
4. REFER TO PRODUCT SPECIFIC TECHNICAL DATA SHEET (TDS) AND GUIDE SPECIFICATION FOR INSTALLATION PROCEDURES.



999 N. Pacific Coast Highway, Suite 800  
El Segundo, CA 90245  
800-486-1278 • www.henry.com

MANUFACTURER GUIDE DETAILS ARE FOR REFERENCE ONLY. HENRY DOES NOT ASSUME RESPONSIBILITY FOR ERRORS OR DEVIATIONS IN DESIGN OR ENGINEERING. PROJECT SPECIFIC VERIFICATION IS RECOMMENDED PRIOR TO INSTALLATION.

**HENRY PRE-APPLIED WATERPROOFING SYSTEM**

**SOLDIER PILE**

**BLUESKIN PRESEAL 320 OR BLUESKIN PRESEAL 435**  
**BACK-LAGGED SOLDIER PILE - HYDROSTATIC**

SCALE: N.T.S.

11-20-2020

**BSPS-2B1A**