

HENRY DRAINBOARD (SEE NOTE #3)

BLUESKIN PRESEAL 320
OR BLUESKIN PRESEAL 435 (SEE NOTE #2)

SOLDIER PILE

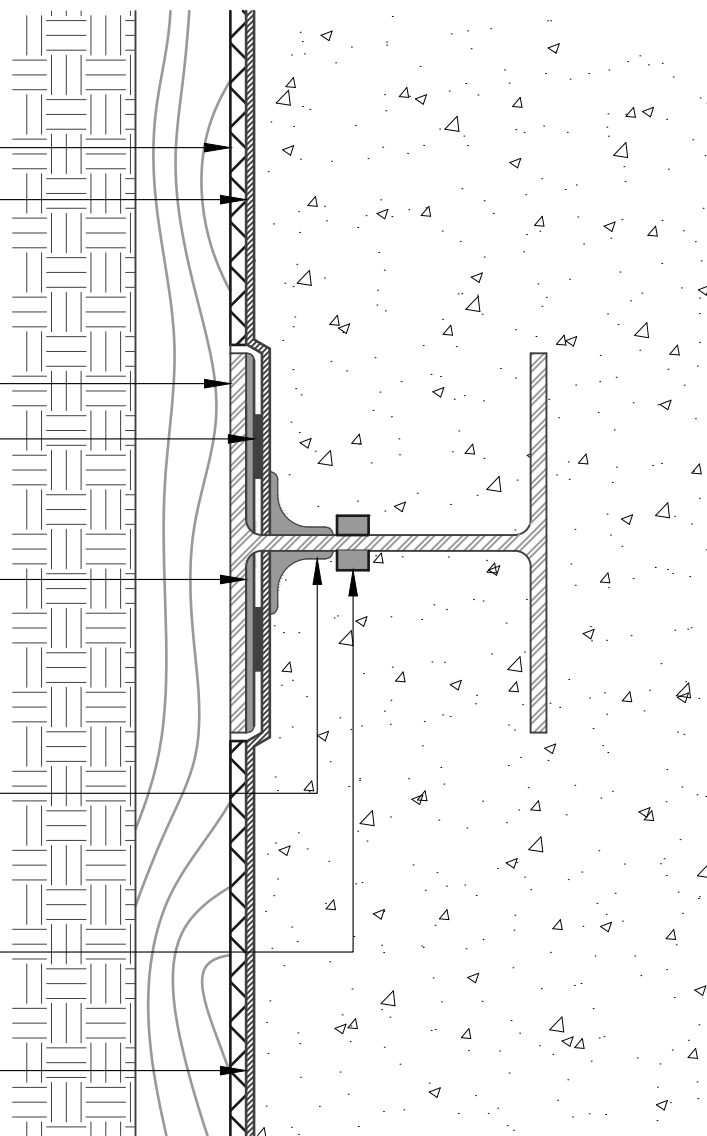
BLUESKIN PRESEAL TAPE 50S

COAT SOLDIER PILE WITH
HENRY 925 BES SEALANT

SEAL SOLDIER PILE WITH A 2" X 2"
FILLET OF HENRY 925 BES SEALANT TO
COVER METAL TO VERTICAL PRE-APPLIED
WATERPROOFING CONNECTION

HYDRO-FLEX WATERSTOP
(2" MINIMUM CONCRETE
COVERAGE ON ALL SIDES)

BLUESKIN PRESEAL 320
OR BLUESKIN PRESEAL 435 (SEE NOTE #2)



PLAN VIEW - NO TIE-IN AT UNDER SLAB WATERPROOFING
SOLDIER PILE AT WOOD LAGGING

NOTES:

1. DETAIL SHOWS HENRY PRE-APPLIED WATERPROOFING SYSTEM FOR APPLICATIONS USING HENRY **BLUESKIN PRESEAL 320** OR **BLUESKIN PRESEAL 435**. SUBSTRATE SHOWN IS FOR REFERENCE ONLY.
2. HENRY **BLUESKIN PRESEAL 435** CAN BE INSTALLED DIRECTLY ONTO SHEET PILING. **BLUESKIN PRESEAL 320** REQUIRES A SMOOTH SURFACE SUCH AS PLYWOOD OR DRAINBOARD.
3. HENRY RECOMMENDS THE USE OF A DRAINBOARD IN NON-HYDROSTATIC CONDITIONS, OR AS A SUBSTRATE PREPARATION. DO NOT USE DRAINBOARD UNLESS IT IS CONNECTED TO A PERMANENT DEWATERING SYSTEM.
4. REFER TO PRODUCT SPECIFIC TECHNICAL DATA SHEET (TDS) AND GUIDE SPECIFICATION FOR INSTALLATION PROCEDURES.

Henry[®]

999 N. Pacific Coast Highway, Suite 800
El Segundo, CA 90245
800-486-1278 • www.henry.com

MANUFACTURER GUIDE DETAILS ARE FOR REFERENCE ONLY. HENRY DOES NOT ASSUME RESPONSIBILITY FOR ERRORS OR DEVIATIONS IN DESIGN OR ENGINEERING. PROJECT SPECIFIC VERIFICATION IS RECOMMENDED PRIOR TO INSTALLATION.

HENRY PRE-APPLIED WATERPROOFING SYSTEM

SOLDIER PILE

**BLUESKIN PRESEAL 320 OR BLUESKIN PRESEAL 435
BACK-LAGGED SOLDIER PILE - NON-HYDROSTATIC**

SCALE: N.T.S.

11-20-2020

BSPS-2B1B