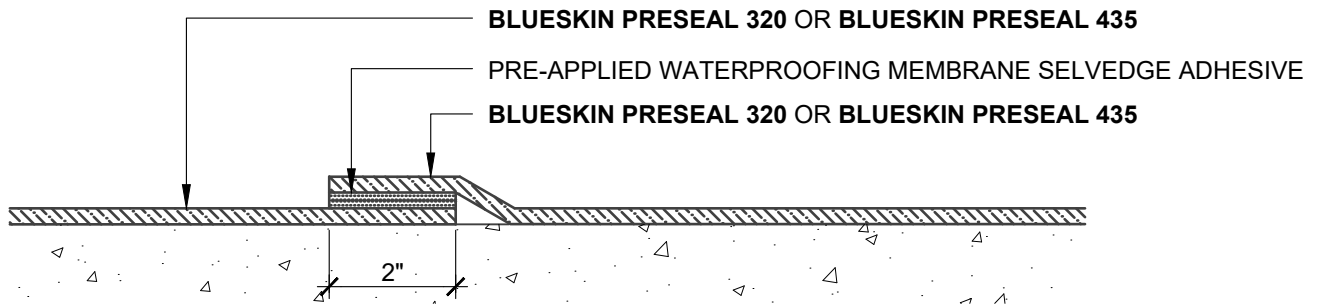


MEMBRANE SELVEDGE INSTALLATION GUIDELINES

1. OVERLAP WATERPROOFING MEMBRANE AT SELVEDGE.
2. REMOVE PLASTIC RELEASE LINER AT SELVEDGE.
3. FIRMLY PRESS MEMBRANE SEAM INTO PLACE.
4. ROLL MEMBRANE SEAM WITH STEEL ROLLER TO ENSURE CONTINUOUS ADHESION.
5. CENTER **BLUESKIN PRESEAL TAPE 120V** AT SEAM EDGE AND ADHERE TAPE ONTO MEMBRANE SEAM
4. ROLL TAPE WITH STEEL ROLLER TO ENSURE CONTINUOUS ADHESION.

SELVEDGE ADHESIVE

SELVEDGE ON ONE SIDE OF SEAM



MEMBRANE SELVEDGE INSTALLATION GUIDELINES

1. OVERLAP WATERPROOFING MEMBRANE AT SELVEDGE.
2. REMOVE PLASTIC RELEASE LINER ON BOTH MEMBRANES TO EXPOSE ADHESIVE.
3. FIRMLY PRESS MEMBRANE SEAM INTO PLACE.
4. ROLL MEMBRANE SEAM WITH STEEL ROLLER TO ENSURE CONTINUOUS ADHESION.

SELVEDGE ADHESIVE

DUAL SELVEDGE AT SEAM

NOTES:

1. DETAIL SHOWS HENRY PRE-APPLIED WATERPROOFING SYSTEM FOR APPLICATIONS USING HENRY **BLUESKIN PRESEAL 320** OR **BLUESKIN PRESEAL 435**. SUBSTRATE SHOWN IS FOR REFERENCE ONLY.
2. REFER TO PRODUCT SPECIFIC TECHNICAL DATA SHEET (TDS) AND GUIDE SPECIFICATION FOR INSTALLATION PROCEDURES.



999 N. Pacific Coast Highway, Suite 800
 El Segundo, CA 90245
 800-486-1278 • www.henry.com

MANUFACTURER GUIDE DETAILS ARE FOR REFERENCE ONLY. HENRY DOES NOT ASSUME RESPONSIBILITY FOR ERRORS OR DEVIATIONS IN DESIGN OR ENGINEERING. PROJECT SPECIFIC VERIFICATION IS RECOMMENDED PRIOR TO INSTALLATION.

HENRY PRE-APPLIED WATERPROOFING SYSTEM

MEMBRANE SEAM OVERLAP

**BLUESKIN PRESEAL 320 OR BLUESKIN PRESEAL 435
 SELVEDGE AT WATERPROOFING MEMBRANE SEAMS**

SCALE: N.T.S.

11-20-2020

BSPS-3A