

OPTIONAL TOP/WEAR COAT AS SPECIFIED PER PROJECT SPECIFIC REQUIREMENTS (REFER TO **PUMADEC** SYSTEM DETAILS):

- **HENRY DEQCOAT 50 TOP COAT**
- **PUMADEC GRIP 40 WEAR COAT**

PUMADEC PRIMER 20

PUMADEC FLEX 30SL
REINFORCED WITH
PUMADEC N-FLEECE

PUMADEC FLEX 31MV
REINFORCED
WITH **PUMADEC N-FLEECE**

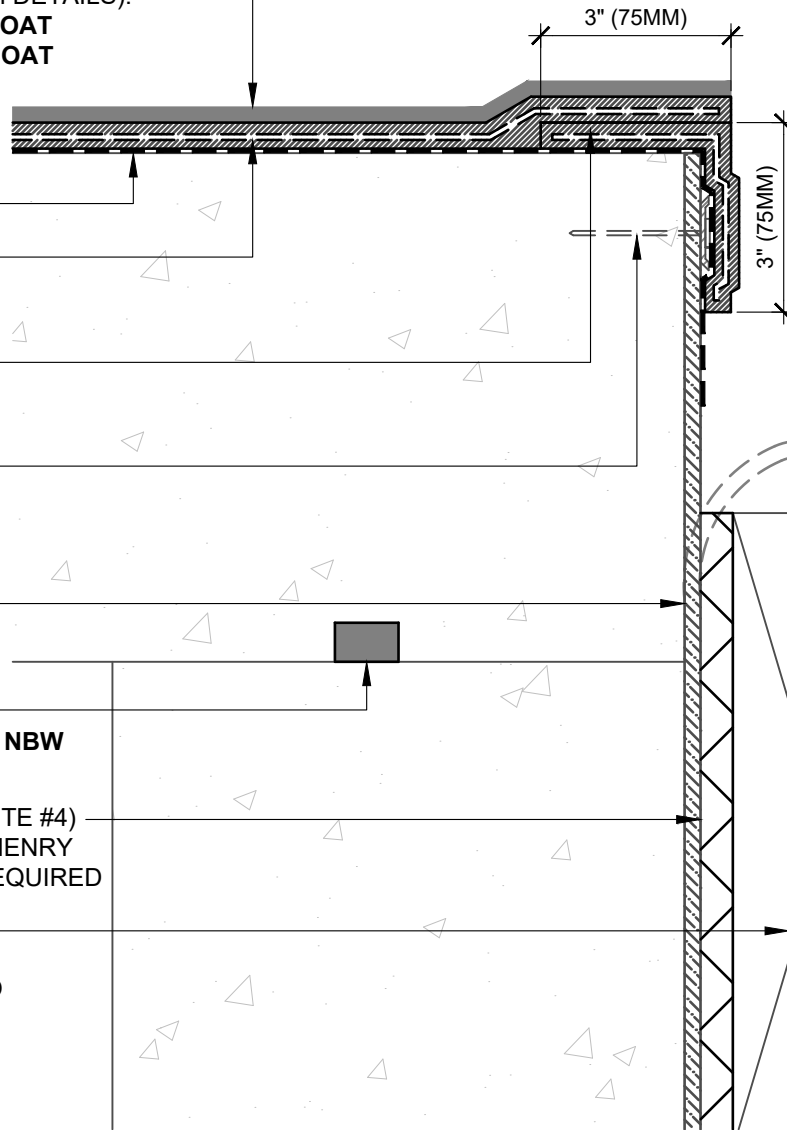
1" (25MM) TERMINATION BAR
(ENCAPSULATE WITH
REINFORCED **PUMADEC**
FLEX 31MV FLASHING)

BLUESKIN PRESEAL 320
OR **BLUESKIN PRESEAL 435**
(SEE NOTE #2)

SYNKO-FLEX WATERSTOP,
MIRASTOP BW, OR MIRASTOP NBW
(SEE NOTE #3)

HENRY DRAINBOARD (SEE NOTE #4)
EXTEND DRAINBOARD OVER HENRY
PUMADEC SYSTEM WHERE REQUIRED

SOIL RETENTION SYSTEM
(DO NOT INSTALL **BLUESKIN**
PRESEAL 320 DIRECTLY ONTO
SHEET PILING - PREPARE
SUBSTRATE WITH A SMOOTH
SURFACE SUCH AS PLYWOOD
OR DRAINBOARD)



EXTEND
PRE-APPLIED
WATERPROOFING
TO ANTICIPATED
CONCRETE LEDGE
AND TEMPORARILY
SECURE UNTIL
SUBSTRATE IS IN
ACCORDANCE WITH
INSTALLATION
REQUIREMENTS

NOTES:

1. DETAIL SHOWS HENRY PRE-APPLIED WATERPROOFING SYSTEM FOR APPLICATIONS USING HENRY **BLUESKIN PRESEAL 320** OR **BLUESKIN PRESEAL 435**. SUBSTRATE SHOWN IS FOR REFERENCE ONLY.
2. HENRY **BLUESKIN PRESEAL 435** CAN BE INSTALLED DIRECTLY ONTO SHEET PILING. **BLUESKIN PRESEAL 320** REQUIRES A SMOOTH SURFACE SUCH AS PLYWOOD OR DRAINBOARD.
3. APPLICATIONS USING SWELLABLE WATERSTOPS: 3" (75MM) MINIMUM CONCRETE COVERAGE ON ALL SIDES.
4. HENRY RECOMMENDS THE USE OF A DRAINBOARD IN NON-HYDROSTATIC CONDITIONS, OR AS A SUBSTRATE PREPARATION.
5. PREPARE AND PRIME VERTICAL SUBSTRATES A MINIMUM 2" (50MM) BEYOND **PUMADEC** SYSTEM APPLICATION IN ACCORDANCE WITH HENRY **PUMADEC** SYSTEM SUBSTRATE PREPARATION GUIDELINES TECH-TALK BULLETIN.
6. REFER TO PRODUCT SPECIFIC TECHNICAL DATA SHEET AND GUIDE SPECIFICATION FOR INSTALLATION PROCEDURES.

MANUFACTURER GUIDE DETAILS ARE FOR REFERENCE ONLY. HENRY DOES NOT ASSUME RESPONSIBILITY FOR ERRORS OR DEVIATIONS IN DESIGN OR ENGINEERING. PROJECT SPECIFIC VERIFICATION IS RECOMMENDED PRIOR TO INSTALLATION.

HENRY PRE-APPLIED WATERPROOFING SYSTEM

DECK TO WALL TRANSITION
BLUESKIN PRESEAL 320 OR BLUESKIN PRESEAL 435
TRANSITION WITH PUMADEC SYSTEM

SCALE: N.T.S.

11-06-2023

BSPS-7D.1

