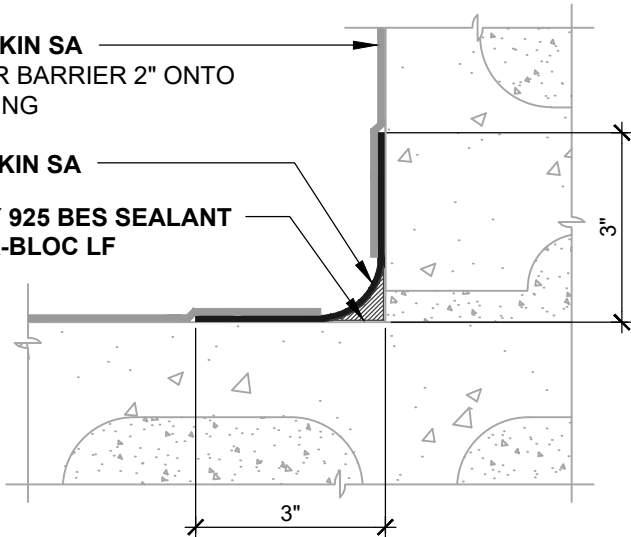


**BLUESKIN SA**  
LAP AIR BARRIER 2" ONTO  
FLASHING

**BLUESKIN SA**

**HENRY 925 BES SEALANT  
OR AIR-BLOC LF**



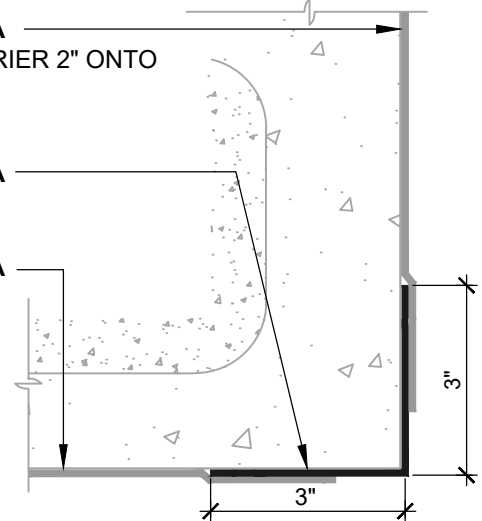
**INSIDE CORNER (PLAN VIEW)**

FLASHING INSTALLED BEFORE WRB

**BLUESKIN SA**  
LAP AIR BARRIER 2" ONTO  
FLASHING

**BLUESKIN SA**

**BLUESKIN SA**



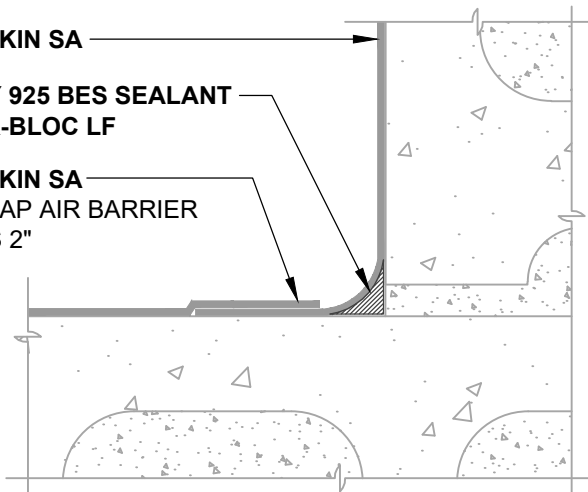
**OUTSIDE CORNER (PLAN VIEW)**

FLASHING INSTALLED BEFORE WRB

**BLUESKIN SA**

**HENRY 925 BES SEALANT  
OR AIR-BLOC LF**

**BLUESKIN SA**  
OVERLAP AIR BARRIER  
SEAMS 2"

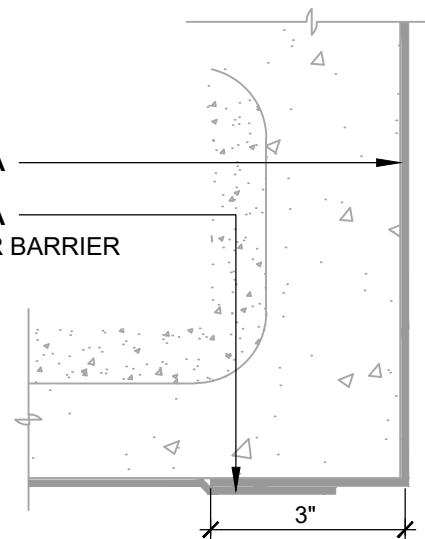


**INSIDE CORNER (PLAN VIEW)**

WRB WRAPPED AROUND CORNER

**BLUESKIN SA**

**BLUESKIN SA**  
OVERLAP AIR BARRIER  
SEAMS 2"



**OUTSIDE CORNER (PLAN VIEW)**

WRB WRAPPED AROUND CORNER

**NOTES:**

1. DETAIL SHOWS **BLUESKIN SA SELF-ADHERED WATER RESISTIVE AIR BARRIER**. SUBSTRATE SHOWN IS FOR REFERENCE ONLY. ACCEPTABLE SUBSTRATES INCLUDE PLYWOOD, OSB, CONCRETE, CMU, METAL, AND EXTERIOR GRADE SHEATHING.
2. FILL GROUT AND STRIKE CMU JOINTS FULL AND FLUSH TO CREATE A CONTINUOUS SUBSTRATE. REFER TO PRODUCT SPECIFIC TECHNICAL DATA SHEET FOR CURE TIME PRIOR TO AIR BARRIER INSTALLATION.
3. SELF-ADHERED MEMBRANE PRIMER NOT SHOWN FOR CLARITY.
4. OTHER FLASHING OPTIONS INCLUDE: **BLUESKIN SA LT**, **BLUESKIN BUTYL FLASH** OR **BLUESKIN METAL CLAD**.
5. INSTALL **BLUESKIN SA** TO ACHIEVE A CONTINUOUS WATER-RESISTIVE BARRIER (WRB). INSULATION AND CLADDING NOT SHOWN FOR CLARITY.
6. REFER TO PRODUCT SPECIFIC TECHNICAL DATA SHEET (TDS) AND **BLUESKIN SA GUIDE SPECIFICATION** FOR INSTALLATION PROCEDURES.

**Henry**<sup>®</sup>

999 N. Pacific Coast Highway, Suite 800  
El Segundo, CA 90245  
800-486-1278 • www.henry.com

MANUFACTURER GUIDE DETAILS ARE FOR REFERENCE ONLY. HENRY DOES NOT ASSUME RESPONSIBILITY FOR ERRORS OR DEVIATIONS IN DESIGN OR ENGINEERING. PROJECT SPECIFIC VERIFICATION IS RECOMMENDED PRIOR TO INSTALLATION.

**BLUESKIN SA SELF-ADHERED WATER RESISTIVE AIR BARRIER**

**INSIDE/OUTSIDE CORNERS**

**CONCRETE MASONRY UNITS (CMU)  
STRIKE MASONRY JOINTS FLUSH**

SCALE: N.T.S.

06-30-2020

**BSSA-3B**