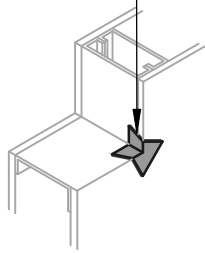


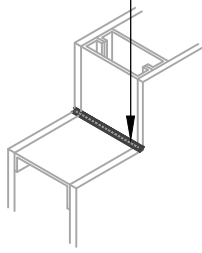
OPTION #1
GUSSET

BLUESKIN SA

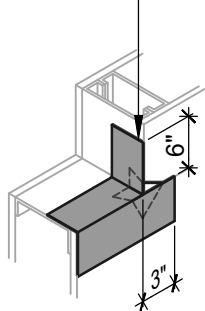


OPTION #2
SEALANT

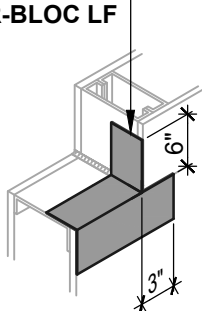
HENRY 925 BES SEALANT
OR AIR-BLOC LF



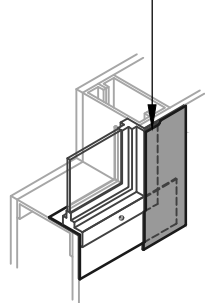
BLUESKIN SA



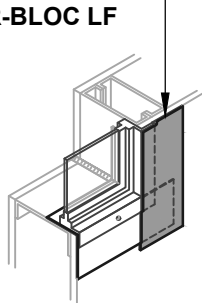
BLUESKIN SA
OR AIR-BLOC LF



BLUESKIN SA



BLUESKIN SA
OR AIR-BLOC LF



WINDOW SILL/JAMB FLASHING
SEALANT AND GUSSET METHODS

BLUESKIN SA
LAP AIR BARRIER 2" ONTO
FLASHING

BLUESKIN SA
OR AIR-BLOC LF

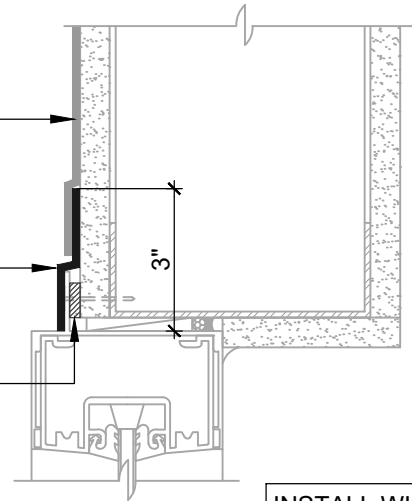
SET WINDOW FLANGE
INTO A BED OF
HENRY 925 BES SEALANT

BLUESKIN SA
OR AIR-BLOC LF
EXTEND FLASHING
3" (SUGGESTED) INTO
ROUGH OPENING (2" MIN)

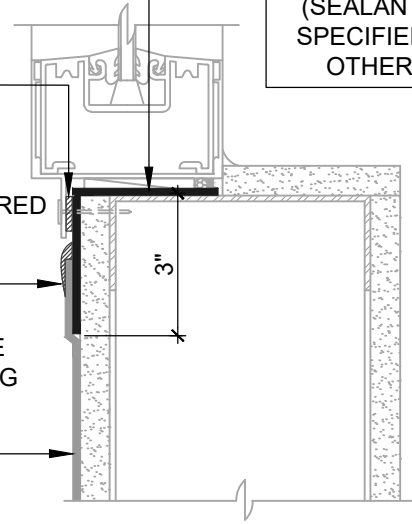
SET WINDOW FLANGE
INTO A BED OF
HENRY 925 BES SEALANT
APPLY INTERMITTENTLY ON
SILL FLANGE WHERE REQUIRED
TO ALLOW DRAINAGE

HENRY 925 BES SEALANT
OR AIR-BLOC LF
ENCAPSULATE UPPER EDGE
OF SELF-ADHERED FLASHING
REVERSE LAP

BLUESKIN SA
LAP AIR BARRIER 2" ONTO
FLASHING



INSTALL WINDOW
PER WINDOW
MANUFACTURER
REQUIREMENTS
(SEALANT AS
SPECIFIED BY
OTHERS)



ASTM E2112 - METHOD A (SECTION VIEW)
FLASHING INSTALLED BEFORE WRB

NOTES:

1. DETAIL SHOWS **BLUESKIN SA SELF-ADHERED WATER RESISTIVE AIR BARRIER**. SUBSTRATE SHOWN IS FOR REFERENCE ONLY. ACCEPTABLE SUBSTRATES INCLUDE PLYWOOD, OSB, CONCRETE, CMU, METAL, AND EXTERIOR GRADE SHEATHING.
2. SELF-ADHERED MEMBRANE PRIMER NOT SHOWN FOR CLARITY.
3. OTHER FLASHING OPTIONS INCLUDE: **BLUESKIN SA LT, BLUESKIN BUTYL FLASH** OR **BLUESKIN METAL CLAD**.
4. HENRY WINDOW FLASHING DETAILS ARE BASED ON ASTM E2112. ACTUAL CONDITIONS MAY VARY. VERIFY PROJECT SPECIFIC WINDOW INSTALLATION REQUIREMENTS AND FLASHING COMPATIBILITY WITH DESIGN PROFESSIONAL.
5. INSTALL **BLUESKIN SA** TO ACHIEVE A CONTINUOUS WATER-RESISTIVE BARRIER (WRB). INSULATION AND CLADDING NOT SHOWN FOR CLARITY.
6. REFER TO PRODUCT SPECIFIC TECHNICAL DATA SHEET (TDS) AND **BLUESKIN SA** GUIDE SPECIFICATION FOR INSTALLATION PROCEDURES.

Henry[®]

999 N. Pacific Coast Highway, Suite 800
El Segundo, CA 90245
800-486-1278 • www.henry.com

MANUFACTURER GUIDE DETAILS ARE FOR REFERENCE ONLY. HENRY DOES NOT ASSUME RESPONSIBILITY FOR ERRORS OR DEVIATIONS IN DESIGN OR ENGINEERING. PROJECT SPECIFIC VERIFICATION IS RECOMMENDED PRIOR TO INSTALLATION.

BLUESKIN SA SELF-ADHERED WATER RESISTIVE AIR BARRIER

FLANGED WINDOW

**ASTM E2112 METHOD A
FLASHING INSTALLED BEFORE WRB**

SCALE: N.T.S.

06-30-2020

BSSA-6A-A