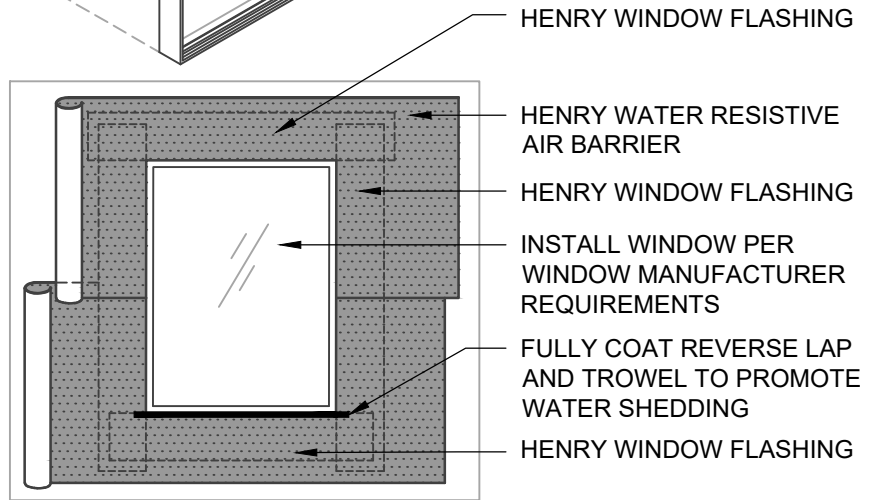


**ASTM E2112 - METHOD B**  
FLASHING INSTALLED BEFORE WRB

**Henry** WATER RESISTIVE BARRIER (WRB) ASSEMBLY

<b>HENRY WATER RESISTIVE AIR BARRIER</b>
• <b>BLUESKIN SA</b>
<b>HENRY WINDOW FLASHING</b>
• <b>BLUESKIN SA</b>
<b>HENRY SEALANT</b>
• <b>HENRY 925 BES SEALANT</b>
• <b>AIR-BLOC LF</b>



**ASTM E2112 - METHOD B (ELEVATION)**  
FLASHING INSTALLED BEFORE WRB

NOTES:

1. DETAIL SHOWS **BLUESKIN SA SELF-ADHERED WATER RESISTIVE AIR BARRIER**. SUBSTRATE SHOWN IS FOR REFERENCE ONLY. ACCEPTABLE SUBSTRATES INCLUDE PLYWOOD, OSB, CONCRETE, CMU, METAL, AND EXTERIOR GRADE SHEATHING.
2. SELF-ADHERED MEMBRANE PRIMER NOT SHOWN FOR CLARITY.
3. OTHER FLASHING OPTIONS INCLUDE: **BLUESKIN SA LT, BLUESKIN BUTYL FLASH OR BLUESKIN METAL CLAD**.
4. HENRY WINDOW FLASHING DETAILS ARE BASED ON ASTM E2112. ACTUAL CONDITIONS MAY VARY. VERIFY PROJECT SPECIFIC WINDOW INSTALLATION REQUIREMENTS AND FLASHING COMPATIBILITY WITH DESIGN PROFESSIONAL.
5. REFER TO PRODUCT SPECIFIC TECHNICAL DATA SHEET (TDS) AND **BLUESKIN SA** GUIDE SPECIFICATION FOR INSTALLATION PROCEDURES.



999 N. Pacific Coast Highway, Suite 800  
El Segundo, CA 90245  
800-486-1278 • www.henry.com

MANUFACTURER GUIDE DETAILS ARE FOR REFERENCE ONLY. HENRY DOES NOT ASSUME RESPONSIBILITY FOR ERRORS OR DEVIATIONS IN DESIGN OR ENGINEERING. PROJECT SPECIFIC VERIFICATION IS RECOMMENDED PRIOR TO INSTALLATION.

**BLUESKIN SA SELF-ADHERED WATER RESISTIVE AIR BARRIER**

**NON-FLANGED WINDOW**

**ASTM E2112 METHOD B  
FLASHING INSTALLED BEFORE WRB**

SCALE: N.T.S.

06-30-2020

**BSSA-6B-B**