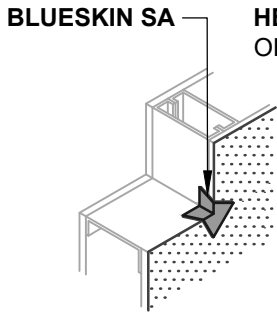
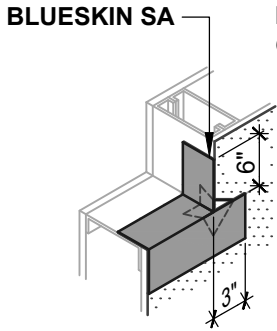
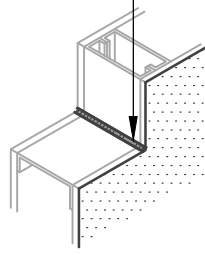


**OPTION #1**

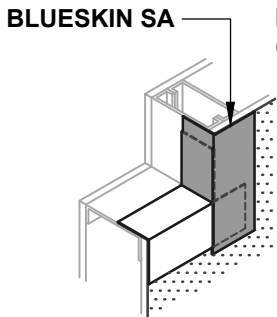
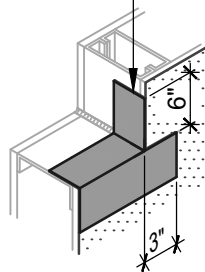
GUSSET



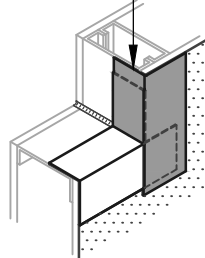
**HENRY 925 BES SEALANT OR AIR-BLOC LF**



**BLUESKIN SA OR AIR-BLOC LF**



**BLUESKIN SA OR AIR-BLOC LF**



**WINDOW SILL/JAMB FLASHING**

SEALANT AND GUSSET METHODS

**OPTION #2**

SEALANT

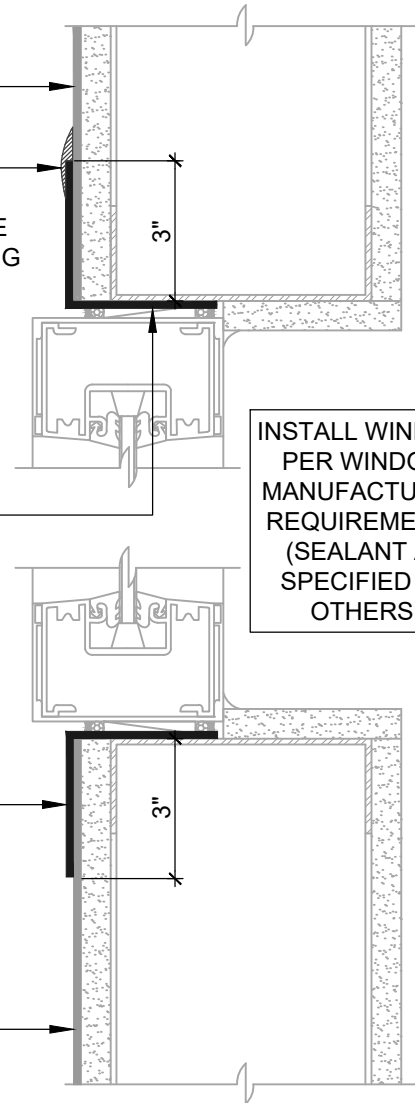
**BLUESKIN SA**

**HENRY 925 BES SEALANT OR AIR-BLOC LF**  
ENCAPSULATE UPPER EDGE OF SELF-ADHERED FLASHING REVERSE LAP

**BLUESKIN SA OR AIR-BLOC LF**  
EXTEND FLASHING 3" (SUGGESTED) INTO ROUGH OPENING (2" MIN)

**BLUESKIN SA OR AIR-BLOC LF**  
EXTEND FLASHING 3" (SUGGESTED) INTO ROUGH OPENING (2" MIN)

**BLUESKIN SA**



**ASTM E2112- METHOD B1 (SECTION VIEW)**

FLASHING INSTALLED AFTER WRB

**NOTES:**

1. DETAIL SHOWS **BLUESKIN SA SELF-ADHERED WATER RESISTIVE AIR BARRIER**. SUBSTRATE SHOWN IS FOR REFERENCE ONLY. ACCEPTABLE SUBSTRATES INCLUDE PLYWOOD, OSB, CONCRETE, CMU, METAL, AND EXTERIOR GRADE SHEATHING.
2. SELF-ADHERED MEMBRANE PRIMER NOT SHOWN FOR CLARITY.
3. OTHER FLASHING OPTIONS INCLUDE: **BLUESKIN SA LT, BLUESKIN BUTYL FLASH OR BLUESKIN METAL CLAD**.
4. HENRY WINDOW FLASHING DETAILS ARE BASED ON ASTM E2112. ACTUAL CONDITIONS MAY VARY. VERIFY PROJECT SPECIFIC WINDOW INSTALLATION REQUIREMENTS AND FLASHING COMPATIBILITY WITH DESIGN PROFESSIONAL.
5. INSTALL **BLUESKIN SA** TO ACHIEVE A CONTINUOUS WATER-RESISTIVE BARRIER (WRB). INSULATION AND CLADDING NOT SHOWN FOR CLARITY.
6. REFER TO PRODUCT SPECIFIC TECHNICAL DATA SHEET (TDS) AND **BLUESKIN SA** GUIDE SPECIFICATION FOR INSTALLATION PROCEDURES.



999 N. Pacific Coast Highway, Suite 800  
El Segundo, CA 90245  
800-486-1278 • www.henry.com

MANUFACTURER GUIDE DETAILS ARE FOR REFERENCE ONLY. HENRY DOES NOT ASSUME RESPONSIBILITY FOR ERRORS OR DEVIATIONS IN DESIGN OR ENGINEERING. PROJECT SPECIFIC VERIFICATION IS RECOMMENDED PRIOR TO INSTALLATION.

**BLUESKIN SA SELF-ADHERED WATER RESISTIVE AIR BARRIER**

**NON-FLANGED WINDOW**

**ASTM E2112 METHOD B1  
FLASHING INSTALLED AFTER WRB**

SCALE: N.T.S.

06-30-2020

**BSSA-6B1-A**