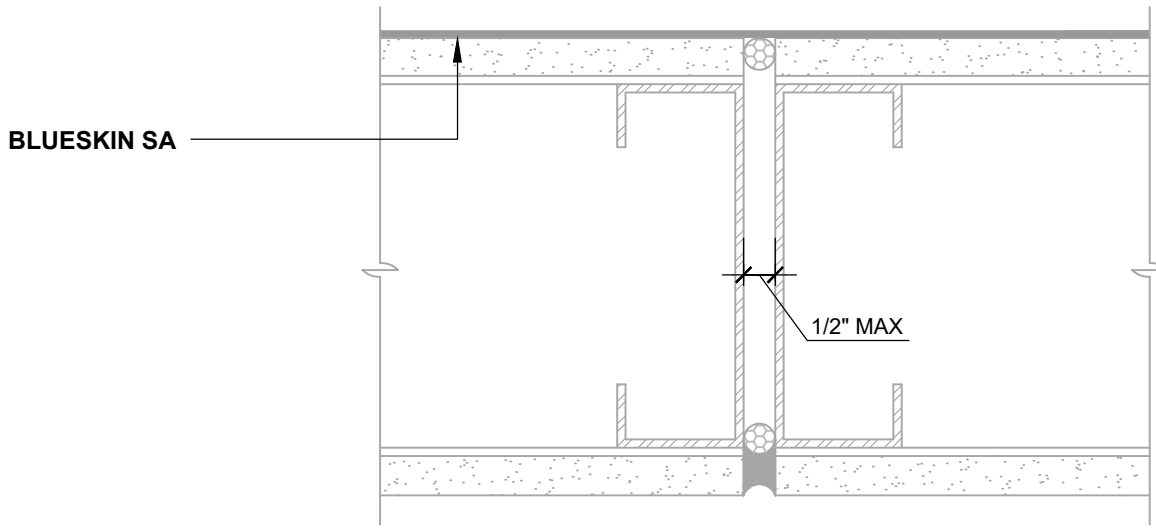


**CMU MORTAR JOINTS (PLAN VIEW)**

STRIKE MORTAR FULL AND FLUSH



**GAPS UP TO 1/2" MAX (PLAN VIEW)**

FLASHING INSTALLED BEFORE WRB

**NOTES:**

1. DETAIL SHOWS **BLUESKIN SA SELF-ADHERED WATER RESISTIVE AIR BARRIER**. SUBSTRATE SHOWN IS FOR REFERENCE ONLY. ACCEPTABLE SUBSTRATES INCLUDE PLYWOOD, OSB, CONCRETE, CMU, METAL, AND EXTERIOR GRADE SHEATHING.
2. FILL GROUT AND STRIKE CMU JOINTS FULL AND FLUSH TO CREATE A CONTINUOUS SUBSTRATE. REFER TO PRODUCT SPECIFIC TECHNICAL DATA SHEET FOR CURE TIME PRIOR TO AIR BARRIER INSTALLATION.
3. SELF-ADHERED MEMBRANE PRIMER NOT SHOWN FOR CLARITY.
4. INSTALL **BLUESKIN SA** TO ACHIEVE A CONTINUOUS WATER-RESISTIVE BARRIER (WRB). INSULATION AND CLADDING NOT SHOWN FOR CLARITY.
5. REFER TO PRODUCT SPECIFIC TECHNICAL DATA SHEET (TDS) AND **BLUESKIN SA** GUIDE SPECIFICATION FOR INSTALLATION PROCEDURES.



999 N. Pacific Coast Highway, Suite 800  
 El Segundo, CA 90245  
 800-486-1278 • www.henry.com

MANUFACTURER GUIDE DETAILS ARE FOR REFERENCE ONLY. HENRY DOES NOT ASSUME RESPONSIBILITY FOR ERRORS OR DEVIATIONS IN DESIGN OR ENGINEERING. PROJECT SPECIFIC VERIFICATION IS RECOMMENDED PRIOR TO INSTALLATION.

**BLUESKIN SA SELF-ADHERED WATER RESISTIVE AIR BARRIER**

**NON-MOVING JOINTS**

**CMU MORTAR JOINTS AND  
 SUBSTRATE GAPS UP TO 1/2" WIDE MAXIMUM**

SCALE: N.T.S.

06-30-2020

**BSSA-8A**