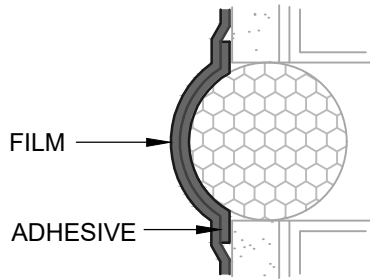


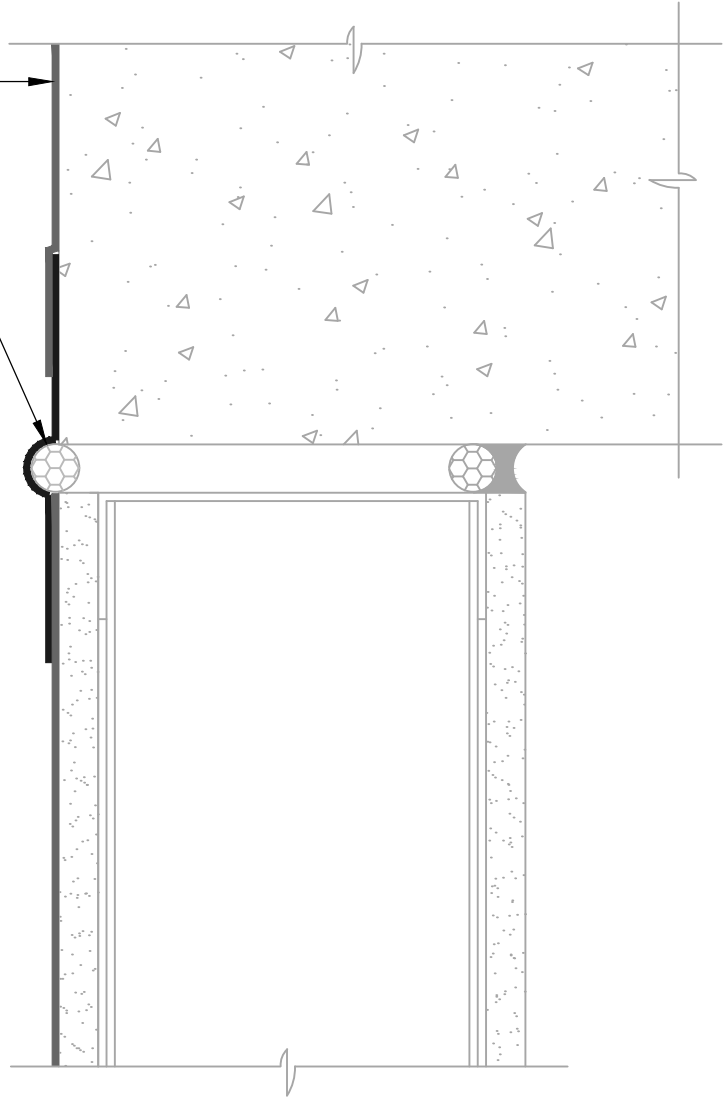
BLUESKIN SA LAP AIR BARRIER
2" ONTO FLASHING

BLUESKIN SA
(SEE CONVEX LOOP FLASHING DETAIL)

CREATE CONVEX LOOP IN
MEMBRANE OVER BACKER ROD.
PRIOR TO INSTALLATION, ADHERE
MEMBRANE TO ITSELF AND
INSTALL TO PREVENT ADHESION
TO BACKER ROD.



CONVEX LOOP FLASHING
"SIAMESE" FLASHING



NOTES:

1. DETAIL SHOWS **BLUESKIN SA SELF-ADHERED WATER RESISTIVE AIR BARRIER**. SUBSTRATE SHOWN IS FOR REFERENCE ONLY. ACCEPTABLE SUBSTRATES INCLUDE PLYWOOD, OSB, CONCRETE, CMU, METAL, AND EXTERIOR GRADE SHEATHING.
2. REFER TO PRODUCT SPECIFIC TECHNICAL DATA SHEET (TDS) FOR PRIMER REQUIREMENTS. OTHER FLASHING OPTIONS INCLUDE: **BLUESKIN BUTYL FLASH, BLUESKIN SA LT OR METAL CLAD**.
3. INSTALL **BLUESKIN SA** TO ACHIEVE A CONTINUOUS WATER-RESISTIVE BARRIER (WRB). INSULATION AND CLADDING NOT SHOWN FOR CLARITY. REFER TO LOCAL CODE ORDINANCES FOR INSULATION AND VAPOR BARRIER REQUIREMENTS.
4. REFER TO PRODUCT SPECIFIC TECHNICAL DATA SHEET (TDS) AND **BLUESKIN SA** GUIDE SPECIFICATION FOR INSTALLATION PROCEDURES.

Henry[®]

999 N. Pacific Coast Highway, Suite 800
El Segundo, CA 90245
800-486-1278 • www.henry.com

MANUFACTURER GUIDE DETAILS ARE FOR REFERENCE ONLY. HENRY DOES NOT ASSUME RESPONSIBILITY FOR ERRORS OR DEVIATIONS IN DESIGN OR ENGINEERING. PROJECT SPECIFIC VERIFICATION IS RECOMMENDED PRIOR TO INSTALLATION.

BLUESKIN SA SELF-ADHERED WATER RESISTIVE AIR BARRIER

DEFLECTION JOINT

**HORIZONTAL DEFLECTION JOINT
SELF-ADHERED FLASHING**

SCALE: N.T.S.

08-12-2019

BSSA-8D