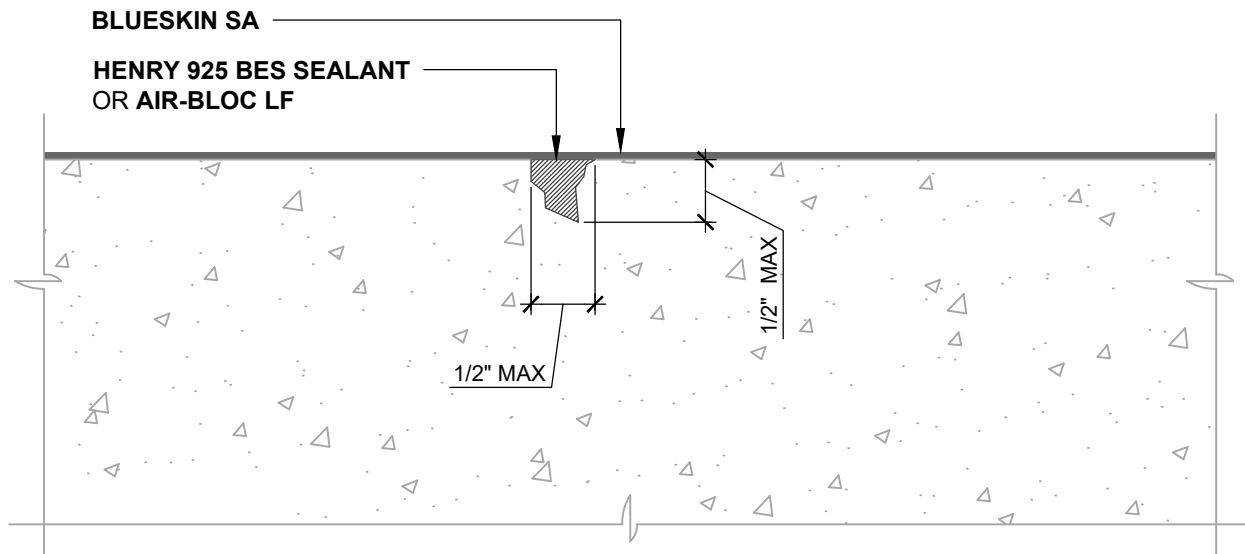


**GAPS UP TO 1/16" MAX (PLAN VIEW)**  
NO SUPPLEMENTARY SEALANT REQUIRED



**GAPS UP TO 1/2" MAX (PLAN VIEW)**  
SEALANT OR LIQUID APPLIED FLASHING  
INSTALLED BEFORE WRB

**NOTES:**

1. DETAIL SHOWS **BLUESKIN SA SELF-ADHERED WATER RESISTIVE AIR BARRIER**. THIS DETAIL IS SPECIFIC TO MASONRY AND CONCRETE SUBSTRATES ONLY. REFER TO NON-MOVING JOINT DETAILS FOR OTHER SUBSTRATE FLASHINGS.
2. INSTALL **BLUESKIN SA** TO ACHIEVE A CONTINUOUS WATER-RESISTIVE BARRIER (WRB). INSULATION AND CLADDING NOT SHOWN FOR CLARITY. REFER TO LOCAL CODE ORDINANCES FOR INSULATION AND VAPOR BARRIER REQUIREMENTS.
3. REFER TO PRODUCT SPECIFIC TECHNICAL DATA SHEET (TDS) AND **BLUESKIN SA GUIDE** SPECIFICATION FOR INSTALLATION PROCEDURES.

**Henry**<sup>®</sup>

999 N. Pacific Coast Highway, Suite 800  
El Segundo, CA 90245  
800-486-1278 • www.henry.com

MANUFACTURER GUIDE DETAILS ARE FOR REFERENCE ONLY. HENRY DOES NOT ASSUME RESPONSIBILITY FOR ERRORS OR DEVIATIONS IN DESIGN OR ENGINEERING. PROJECT SPECIFIC VERIFICATION IS RECOMMENDED PRIOR TO INSTALLATION.

**BLUESKIN SA SELF-ADHERED WATER RESISTIVE AIR BARRIER**

**SUBSTRATE CRACKS**

**MASONRY AND CONCRETE SUBSTRATE  
CRACKS UP TO 1/2" WIDE MAXIMUM**

SCALE: N.T.S.

08-12-2019

**BSSA-8E**