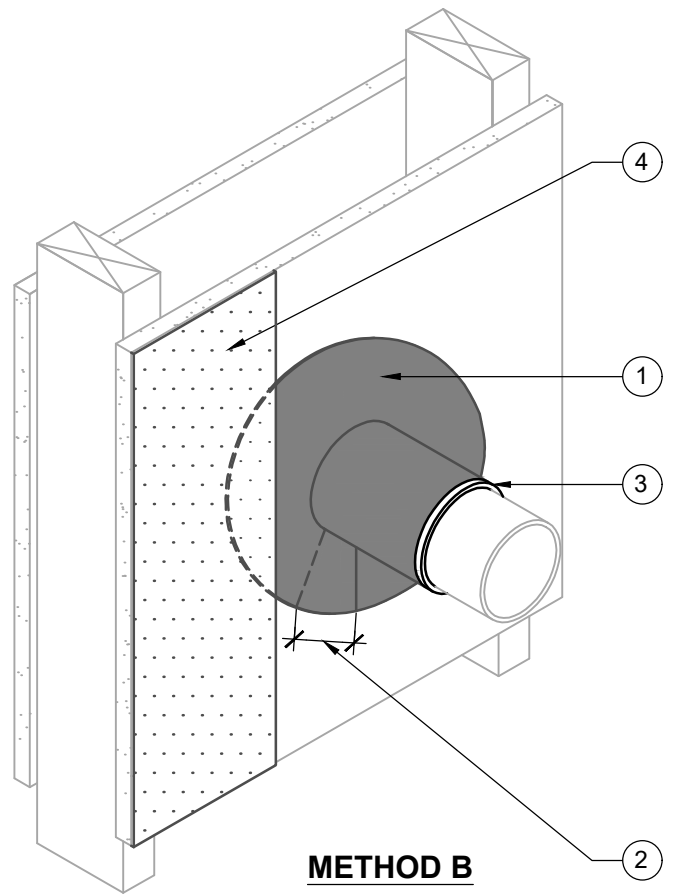


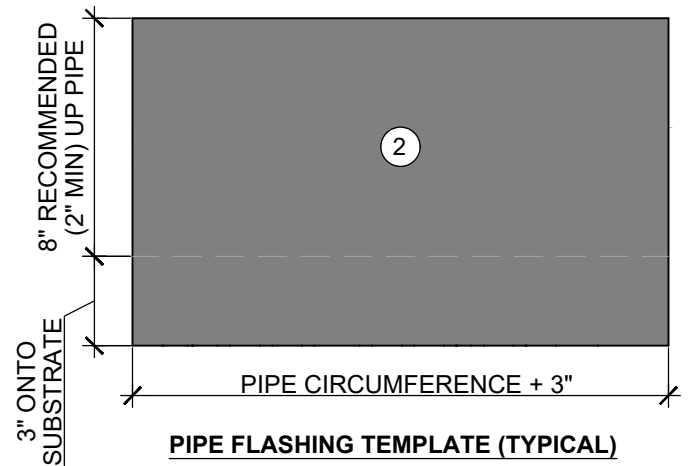
METHOD A



METHOD B

**BLUESKIN® FLEXIBLE BUTYL FLASH
SEQUENCE OF INSTALLATION**

- ① **BLUESKIN® FLEXIBLE BUTYL FLASH**
- ② **OVERLAP BLUESKIN® FLEXIBLE BUTYL FLASH 3" MIN**
- ③ **212 SEALANT OR 925 BES SEALANT**
- ④ **BLUESKIN® VP100**
(NOT FULLY SHOWN ON METHOD B FOR CLARITY)
- ⑤ **212 SEALANT**



PIPE FLASHING TEMPLATE (TYPICAL)

NOTES:

1. DETAIL SHOWS **BLUESKIN® VP100** ASSEMBLY INSTALLED OVER EXTERIOR GRADE SHEATHING. ACCEPTABLE SUBSTRATES INCLUDE PLYWOOD, OSB, CONCRETE, GYPSUM BOARD AND CONCRETE BLOCK.
2. WHERE ADHESION IS LESS THAN DESIRED, OR WHEN APPLYING TO CONCRETE OR MASONRY, RECOMMENDED PRIMERS INCLUDE: **BLUESKIN® SPRAY PREP** OR **AQUATAC™**.
3. INSULATION, CLADDING, AND OPTIONAL VAPOUR BARRIER NOT SHOWN FOR CLARITY.
4. REFER TO **BLUESKIN® VP100** INSTALLATION MANUAL FOR RECOMMENDED INSTALLATION PROCEDURES.

Henry®

999 Sepulveda Blvd., Suite 800
El Segundo, CA 90245
800-486-1278 • www.henry.com

MANUFACTURER GUIDE DETAILS ARE FOR REFERENCE ONLY. HENRY® DOES NOT ASSUME RESPONSIBILITY FOR ERRORS OR DEVIATIONS IN DESIGN OR ENGINEERING. PROJECT SPECIFIC VERIFICATION IS RECOMMENDED PRIOR TO INSTALLATION.

BLUESKIN® VP100 SELF-ADHERED WATER RESISTIVE AIR BARRIER

PIPE PENETRATION

SUBSTRATE GAPS UP TO 3/4" WIDE GAP MAXIMUM
BLUESKIN® FLEXIBLE BUTYL FLASHING - ISOMETRIC

SCALE: N.T.S.

03-20-2018

BSVP100-2D1