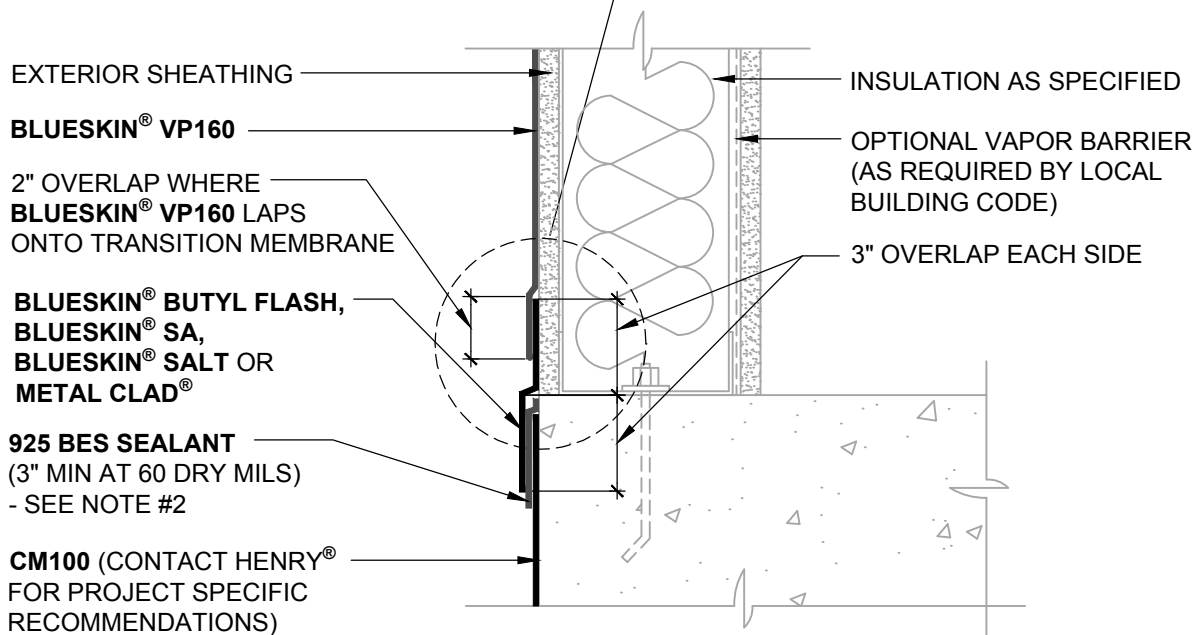


REVERSE LAP METHOD



NOTES:

1. DETAIL SHOWS **BLUESKIN® VP160** ASSEMBLY INSTALLED OVER EXTERIOR GRADE SHEATHING. ACCEPTABLE SUBSTRATES INCLUDE PLYWOOD, OSB, CONCRETE, GYPSUM BOARD AND CONCRETE BLOCK.
2. HENRY® **CM100** IS NOT CHEMICALLY COMPATIBLE WITH ASPHALT. INSTALL **925 BES SEALANT** AS A BOND BREAKER ONTO FULLY CURED **CM100** PRIOR TO **BLUESKIN® TWF** INSTALLATION. ALLOW **925 BES SEALANT** TO CURE PRIOR TO SUBSEQUENT INSTALLATION.
3. PRIME **BLUESKIN® VP160** WHERE **BLUESKIN® SA, BLUESKIN® SALT OR METAL CLAD®** LAPS ONTO **BLUESKIN® VP160**. RECOMMENDED PRIMERS/ADHESIVES INCLUDE: **BLUESKIN® LVC ADHESIVE, AQUATAC™ PRIMER OR BLUESKIN® ADHESIVE**.
4. CLADDING AND OPTIONAL CONTINUOUS INSULATION AS REQUIRED PER BUILDING CODE NOT SHOWN FOR CLARITY.
5. INSTALL THE **BLUESKIN® VP160** ASSEMBLY TO PROVIDE A CONTINUOUS AIR AND WATER BARRIER.
6. REFER TO **BLUESKIN® VP160** INSTALLATION MANUAL FOR RECOMMENDED INSTALLATION PROCEDURES.

Henry®

999 Sepulveda Blvd., Suite 800
El Segundo, CA 90245
800-486-1278 • www.henry.com

MANUFACTURER GUIDE DETAILS ARE FOR REFERENCE ONLY. HENRY® DOES NOT ASSUME RESPONSIBILITY FOR ERRORS OR DEVIATIONS IN DESIGN OR ENGINEERING. PROJECT SPECIFIC VERIFICATION IS RECOMMENDED PRIOR TO INSTALLATION.

BLUESKIN® VP160 SELF-ADHERED WATER RESISTIVE AIR BARRIER

WALL FOUNDATION

EXTERIOR WALL AND FOUNDATION TRANSITION
NO BRICK LEDGE - **CM100**

SCALE: N.T.S. 06-20-2017

BSVP160-1C3